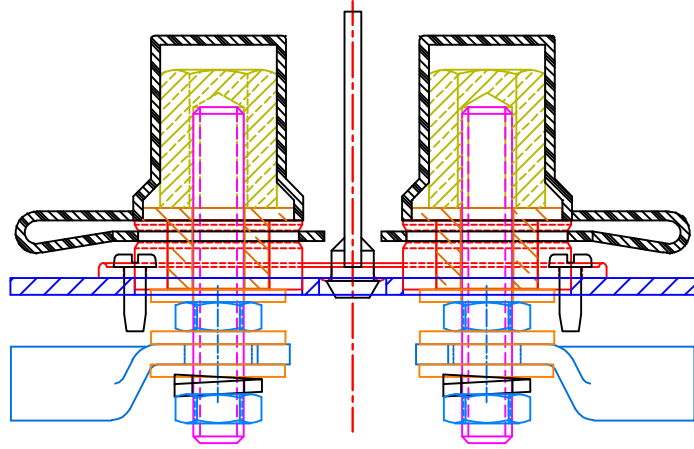


THE INFORMATION CONTAINED IN THIS DRAWING IS THE SOLE PROPERTY OF VTE INCORPORATED. ANY REPRODUCTION IN PART OR WHOLE WITHOUT THE WRITTEN PERMISSION OF VTE INCORPORATED IS PROHIBITED.

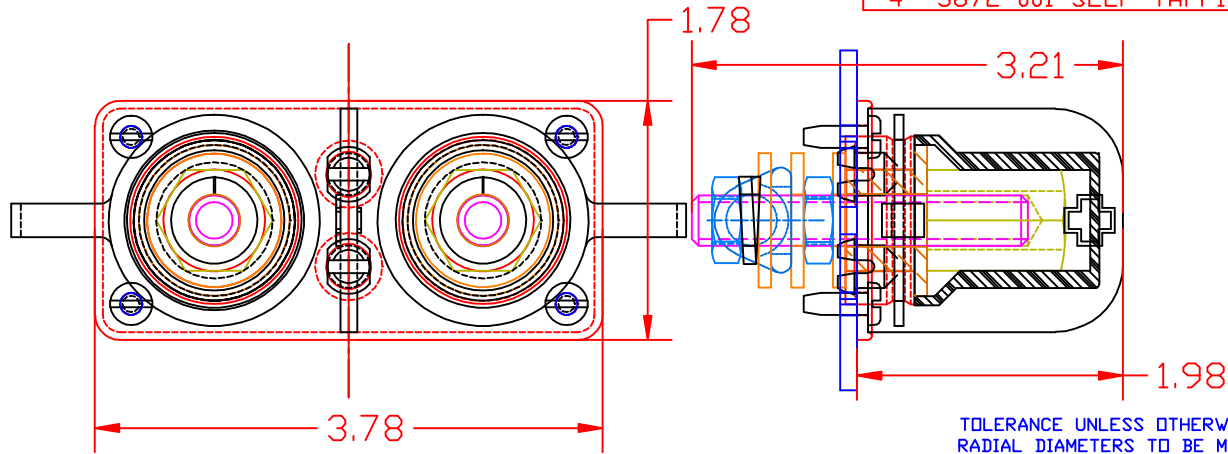
LTR.	REVISIONS	DATE
A	ADDED P/N 3872-001 TO CHART	05APR07
B	ADDED P/N 30701 AND 1670210002 ID LABEL TO CHART	15MAY07
C	30702 WAS 30701	30OCT07



PART NUMBER 71701 CONSISTS OF:

1- 317D9V14 MOUNTING PLATE
1- 318N0V14 SAFETY DIVIDER
1- 319N9V02 POSITIVE CAP
1- 319N9V14 NEGATIVE CAP
2- 3925-001 BRASS BUSHINGS
2- 3741 BRASS THREADED STUDS
2- 3860 BRASS HEX CAP NUTS
6- 3639 S.S. FLAT WASHERS
4- 3838 BRASS JAM NUTS
2- 3638 S.S. SPRING WASHERS
1- 16702100002 SELF ADHESIVE ID TAG
1- 30702 DRILL GUIDE TEMPLATE
4- 3872-001 SELF TAPPING SCREWS

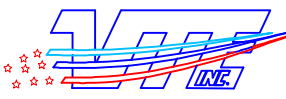
(B) (C)
(A)



TOLERANCE UNLESS OTHERWISE SPECIFIED: $\pm 0.30 / \pm 0.8\text{mm}$
 RADIAL DIAMETERS TO BE MEASURED OVER MANDRELS,
 RING GAGES OR PIN GAGES OF SUITABLE SIZE

MAXIMUM AMPERAGE: 300 AMPS @ 12VDC

#8 MOUNTING SCREWS AND TERMINAL LUGS NOT PROVIDED

		VTE Incorporated 5437 Robinson Road, P.O. Box 790 Pellston, Michigan 49769 Telephone: 1-800-527-9256, 231-539-8000 FAX: 231-539-0914	
		REF: ***	DATE: 09MAY03
TITLE: JUMPERSTUD ASSEMBLY			SCALE:
MATERIAL:		PART NO.	
COLOR: *****		71701	
DRG CLASS *****			