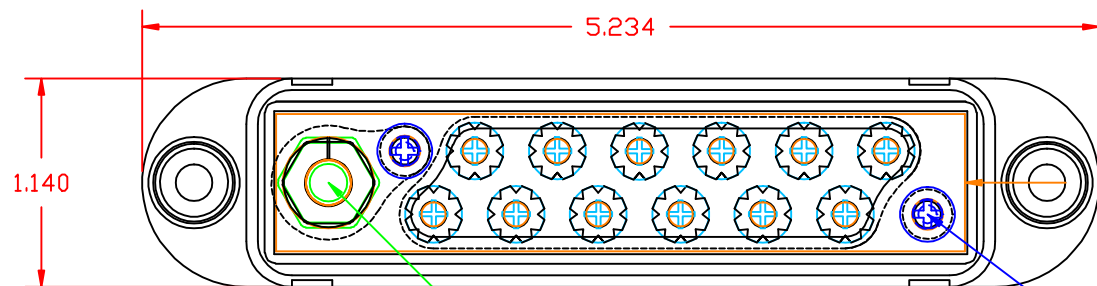
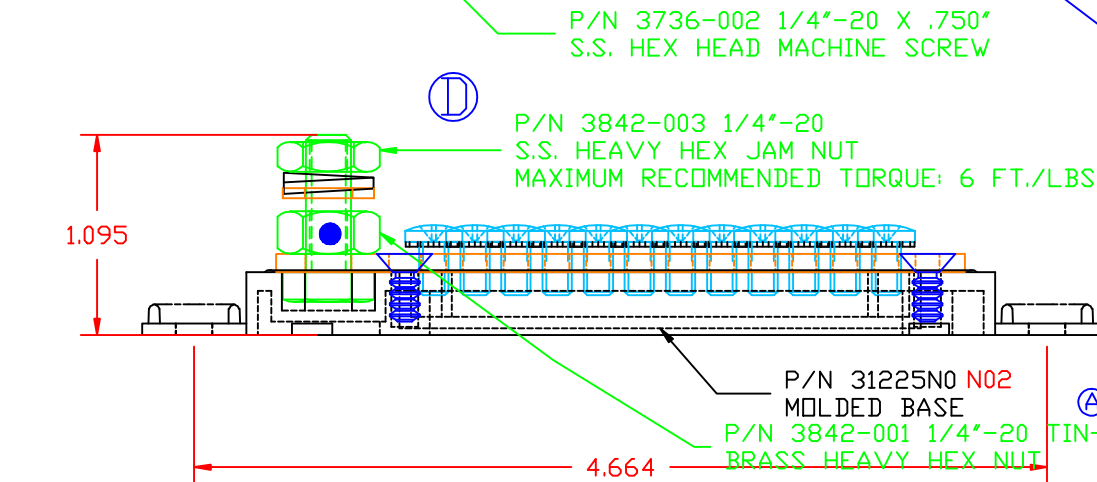


THE INFORMATION CONTAINED IN THIS DRAWING IS THE SOLE PROPERTY OF VTE INCORPORATED. ANY REPRODUCTION IN PART OR WHOLE WITHOUT THE WRITTEN PERMISSION OF VTE INCORPORATED IS PROHIBITED.

LTR.	REVISIONS	DATE
A	3842-001 WAS 3842-002	14AUG06
B	3874-000 WAS 3872, 3873-001 WAS 3873	05OCT06
C	ADDED 73873-001 SUB-ASSEMBLY	11OCT06
D	3842-003 WAS 3842-002	22AUG07



- Ⓢ P/N 3870 #8-32 x 5/16" SEMS SCREW W/ EXTERNAL TOOTH WASHER (12 REQ'D)
- Ⓢ P/N 3873-001 NICKEL PLATED COPPER ALLOY BUS STRIP
- Ⓢ P/N 73873-001 SUB-ASSEMBLY OF
- Ⓢ P/N 3874-000 #8x3/8" PHILLIPS FLAT HEAD HIGH-LOW SCREW (2 REQ'D)



- Ⓢ P/N 3842-003 1/4"-20 S.S. HEAVY HEX JAM NUT MAXIMUM RECOMMENDED TORQUE: 6 FT./LBS.
- Ⓢ P/N 3637 1/4" S.S. LOCK WASHER
- Ⓢ P/N 3644-001 1/4" I.D. x .500" O.D. S.S. FLAT WASHER

Ⓢ P/N 31225N0 N02 MOLDED BASE
 Ⓢ P/N 3842-001 1/4"-20 TIN-PLATED BRASS HEAVY HEX NUT

TOLERANCE UNLESS OTHERWISE SPECIFIED: ±.030"/±0.8mm
 RADIAL DIAMETERS TO BE MEASURED OVER MANDRELS, RING GAGES OR PIN GAGES OF SUITABLE SIZE

BASE MATERIAL: GLASS-REINFORCED NYLON
 BASE MATERIAL U.L. RATING: 94 HB
 TESTED AT 240 AMPS @ 12VDC FOR 30 MINUTES, MAXIMUM TEMPERATURE RISE WAS 7.8 DEG. C. MAXIMUM TEMPERATURE RECORDED WAS 30.6 DEG. C.

VTE Incorporated
 5437 Robinson Road, P.O. Box 790
 Pellston, Michigan 49769
 Telephone: 1-800-527-9256, 231-539-8000
 FAX: 231-539-0914

REF: *****	DATE: 22AUG05	DRN BY: BRH	WEIGHT: *****
TITLE: 12-POINT TERMINAL STRIP			SCALE:
MATERIAL:		PART NO.	
COLOR: *****	DRG CLASS *****	7712N0N02	