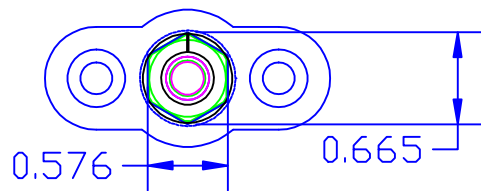
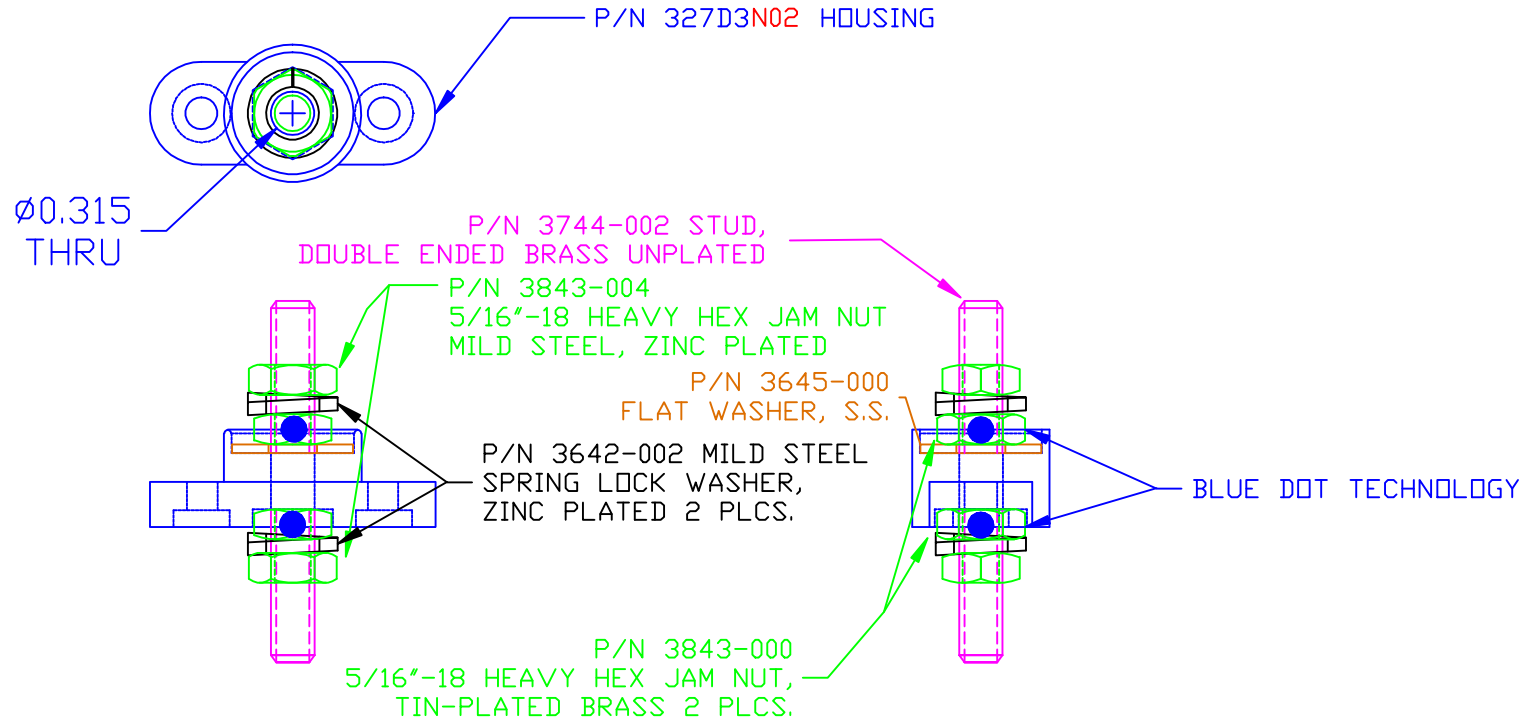


THE INFORMATION CONTAINED IN THIS DRAWING IS THE SOLE PROPERTY OF VTE INCORPORATED. ANY REPRODUCTION IN PART OR WHOLE WITHOUT THE WRITTEN PERMISSION OF VTE INCORPORATED IS PROHIBITED.

LTR.	REVISIONS	DATE
✖	*****	00-000-00

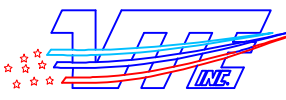


BASE MATERIAL:
BASE MATERIAL U.L. RATING:

GLASS-REINFORCED NYLON
94 HB

MAXIMUM RECOMMENDED FASTENER TORQUE: 8 FT./LBS. (96 IN./LBS.)
MAXIMUM AMPERAGE: 250 AMPS AT 12 VDC

TOLERANCE UNLESS OTHERWISE SPECIFIED:
MOLDED PRODUCTS ONLY: ±0.30"/±0.8mm
HARDWARE ITEMS: ±0.010"/±0.25mm
RADIAL DIAMETERS TO BE MEASURED OVER MANDRELS,
RING GAGES OR PIN GAGES OF SUITABLE SIZE

		VTE Incorporated 5437 Robinson Road, P.O. Box 790 Pellston, Michigan 49769 Telephone: 1-800-527-9256, 231-539-8000 FAX: 231-539-0914	
		REF: *****	DATE: 16OCT07
TITLE: JUNCTION BLOCK, STUD TYPE, PASS-THRU			SCALE:
MATERIAL:		PART NO.	
COLOR: *****	DRG CLASS *****	77231 C N02	