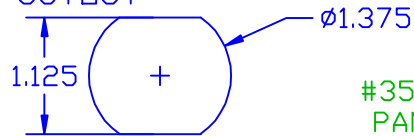


THE INFORMATION CONTAINED IN THIS DRAWING IS THE SOLE PROPERTY OF VTE INCORPORATED. ANY REPRODUCTION IN PART OR WHOLE WITHOUT THE WRITTEN PERMISSION OF VTE INCORPORATED IS PROHIBITED.

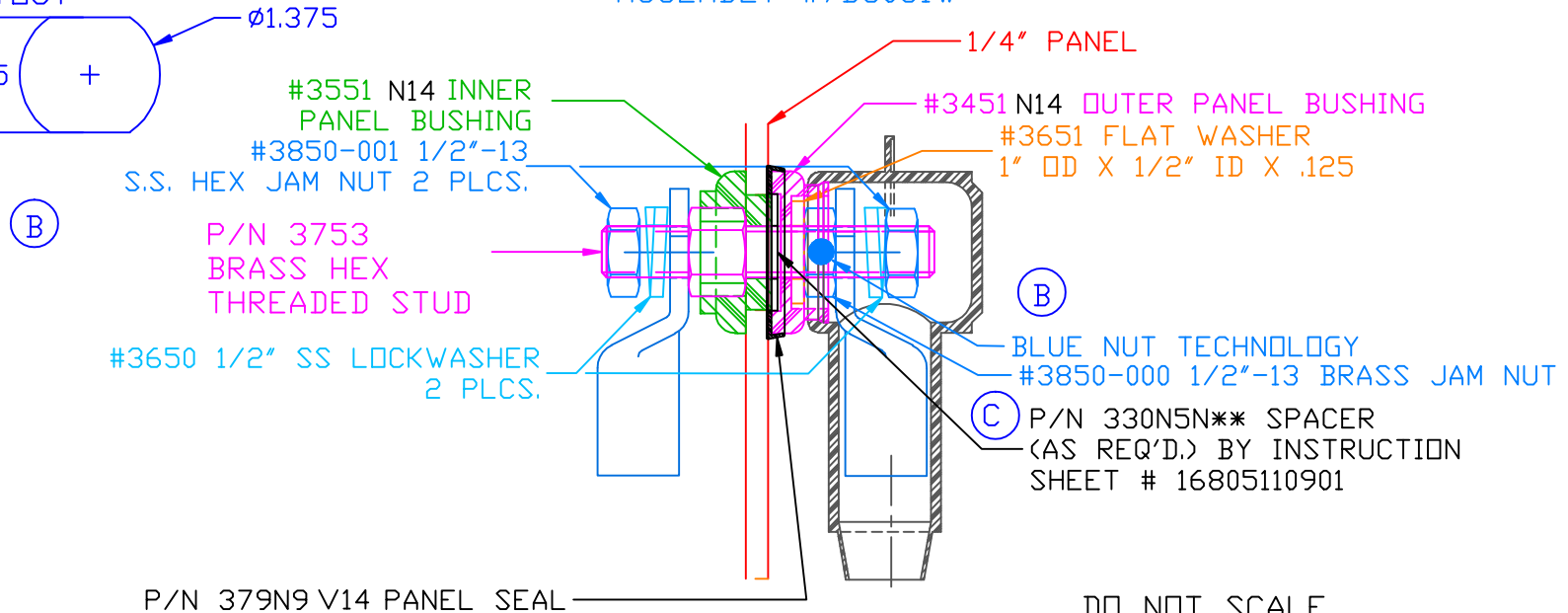
VTE MAKES NO WARRANTY, EXPRESSED OR IMPLIED, AS TO THE SUITABILITY OF A PRODUCT FOR ANY INTENDED USE. THE CUSTOMER SHALL BEAR THE SOLE RESPONSIBILITY OF DETERMINING THE SUITABILITY OF ANY VTE PRODUCT FOR ITS END USE.

| LTR. | REVISIONS | DATE |
|------|--|---------|
| A | ADDED #3652 AND #3653 | 24JAN03 |
| B | 3850-000 WAS 3850, 3850-001 ADDED 2 PLCS. | 02MAR |
| C | ADDED CALLOUT FOR SPACER AND INSTRUCTION SHEET | 01MAY07 |
| D | REVISED TORQUE RECOMMENDATIONS | 08JUN10 |

USE GREENLEE
PUNCH ASSEMBLY
#60098 FOR PANEL
CUTOUT



ASSEMBLY #7B5051W



P/N 379N9 V14 PANEL SEAL

DO NOT SCALE

TOLERANCE UNLESS OTHERWISE SPECIFIED: ±.030"/±0.8mm
RADIAL DIAMETERS TO BE MEASURED OVER MANDRELS,
RING GAGES OR PIN GAGES OF SUITABLE SIZE

MAXIMUM AMPERAGE: 500 AMPS @ 12VDC


MAXIMUM RECOMMENDED FASTENER TORQUE:
BRASS JAM NUT: 240 IN./LBS.
S.S. JAM NUT: 180 IN./LBS.

INCLUDES: 232E4V14 WEATHERPROOFING TERMINAL COVER

BASE MATERIAL:
BASE MATERIAL U.L. RATING:
OPTIONAL ITEMS SHOWN FOR ILLUSTRATIVE
PURPOSE, NOT INCLUDED:

GLASS-REINFORCED NYLON
94 HB

4/0 GA. TERMINAL LUGS (2 PLACES)

| | | | |
|---|------------------|---|---------------|
|  | | VTE Incorporated 5437 Robinson Road, P.O. Box 790 Pellston, Michigan 49769 Telephone: 1-800-527-9256, 231-539-8000 FAX: 231-539-0914 | |
| | | REF: ***** | DATE: 02JAN03 |
| TITLE: POWER BUSHING 1/2" STUD 1/4" MAX PANEL WEATHERPROOF | | | SCALE: |
| MATERIAL: | | PART NO. | |
| COLOR: BLACK | DRG CLASS: ***** | 7B5051 N14 W | |