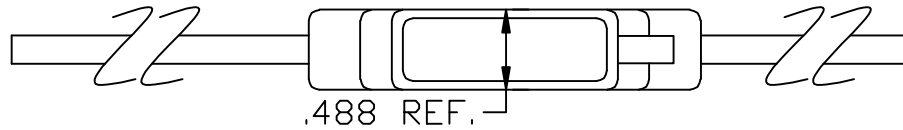
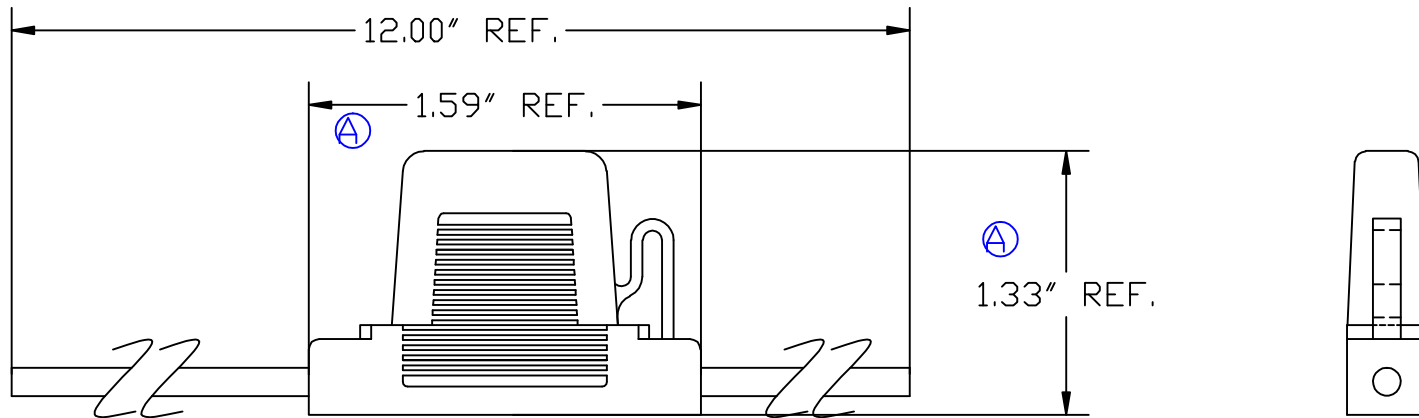


THE INFORMATION CONTAINED IN THIS DRAWING IS THE SOLE PROPERTY OF VTE INCORPORATED. ANY REPRODUCTION IN PART OR WHOLE WITHOUT THE WRITTEN PERMISSION OF VTE INCORPORATED IS PROHIBITED.

LTR.	REVISIONS	DATE
⏏	REVISED TO AGREE WITH PARTS AS MFG'D.	27MAY09

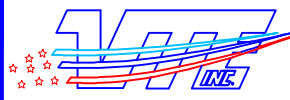


DO NOT SCALE



THIS ITEM IS RoHS COMPLIANT.
 Wire Leads: 14 Ga. Stranded
 Copper
 PVC Insulated, Color Red
 NOTE:
 NOT SUITABLE FOR CONTINUOUS
 DUTY OVER 30 AMPS @12VDC

TOLERANCE UNLESS OTHERWISE SPECIFIED: $\pm 0.30 / \pm 0.8\text{mm}$
 RADIAL DIAMETERS TO BE MEASURED OVER MANDRELS,
 RING GAGES OR PIN GAGES OF SUITABLE SIZE

		VTE Incorporated 5437 Robinson Road, P.O. Box 790 Pellston, Michigan 49769 Telephone: 1-800-527-9256, 231-539-8000 FAX: 231-539-0914	
REF: *****	DATE: 01SEP06	DRN BY: BRH	WEIGHT: *****
TITLE: ATO FUSEHOLDER		CHK'D BY: BRH	SCALE:
MATERIAL:		PART NO.	
COLOR: *****	DRG CLASS *****	AFH933814R	