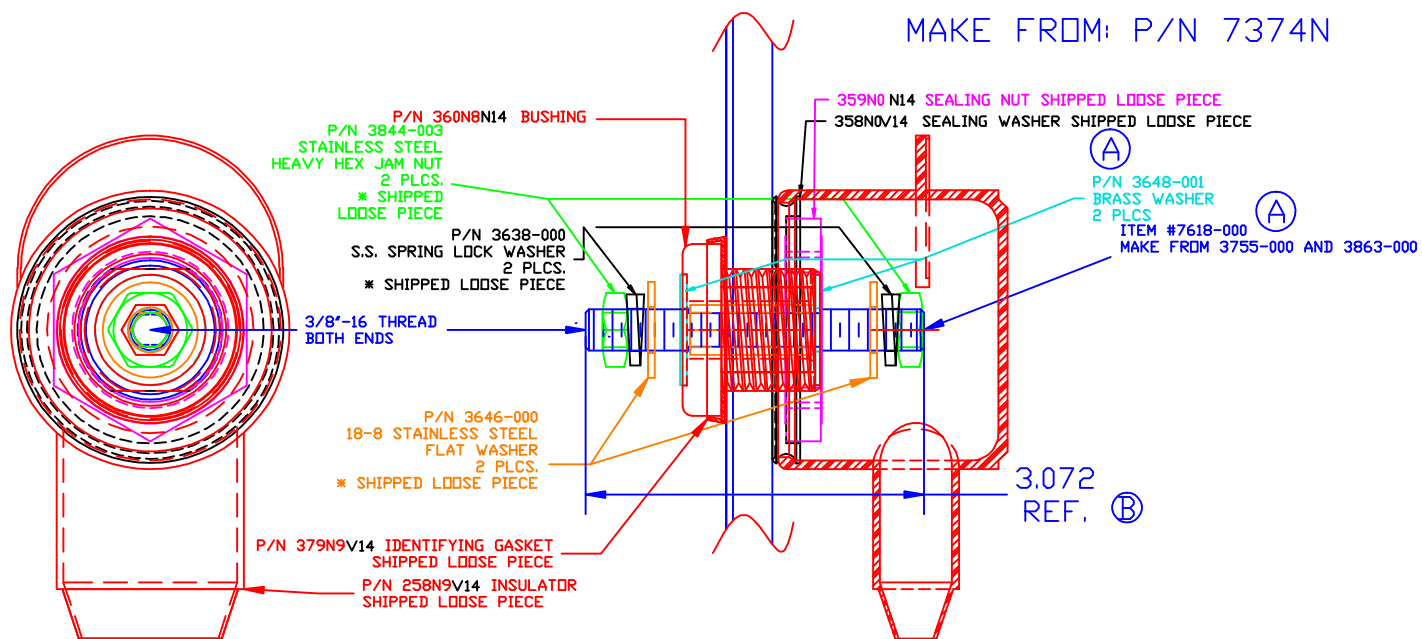


THE INFORMATION CONTAINED IN THIS DRAWING IS THE SOLE PROPERTY OF VTE INCORPORATED. ANY REPRODUCTION IN PART OR WHOLE WITHOUT THE WRITTEN PERMISSION OF VTE INCORPORATED IS PROHIBITED.

LTR.	REVISIONS	DATE
Ⓐ	3648-001 WAS 3648-000, 7618-000 WAS 7618-001	03FEB10
Ⓑ	3.072 WAS 3.250	27JUL10



MAXIMUM FASTENER TORQUES:

JAM NUTS: 15 FT./LBS. (180 IN./LBS.)

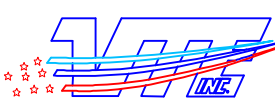
SEALING NUT: 10 FT./LBS. (120 IN./LBS.)

CURRENT CARRYING CAPACITY: 350 AMPS @ 12VDC

BASE MATERIAL: GLASS-REINFORCED NYLON
 BASE MATERIAL U.L. RATING: 94 HB
 VTE MATERIAL P/N: 111210514

TOLERANCE UNLESS OTHERWISE SPECIFIED:
 MOLDED PRODUCTS ONLY: ±0.30"/±0.8mm
 HARDWARE ITEMS: ±0.010"/±0.25mm
 RADIAL DIAMETERS TO BE MEASURED OVER MANDRELS,
 RING GAGES OR PIN GAGES OF SUITABLE SIZE





VTE Incorporated
 5437 Robinson Road, P.O. Box 790
 Pellston, Michigan 49769
 Telephone: 1-800-527-9256, 231-539-8000
 FAX: 231-539-0914

REF: ***	DATE: 28MAY09	DRN BY: BRH	WEIGHT: ***
TITLE: POWER BUSHING, BRASS CORE 350 AMP			SCALE:
MATERIAL:		PART NO.	
COLOR: ****		DRG CLASS: ****	
BCB374N0N14W			