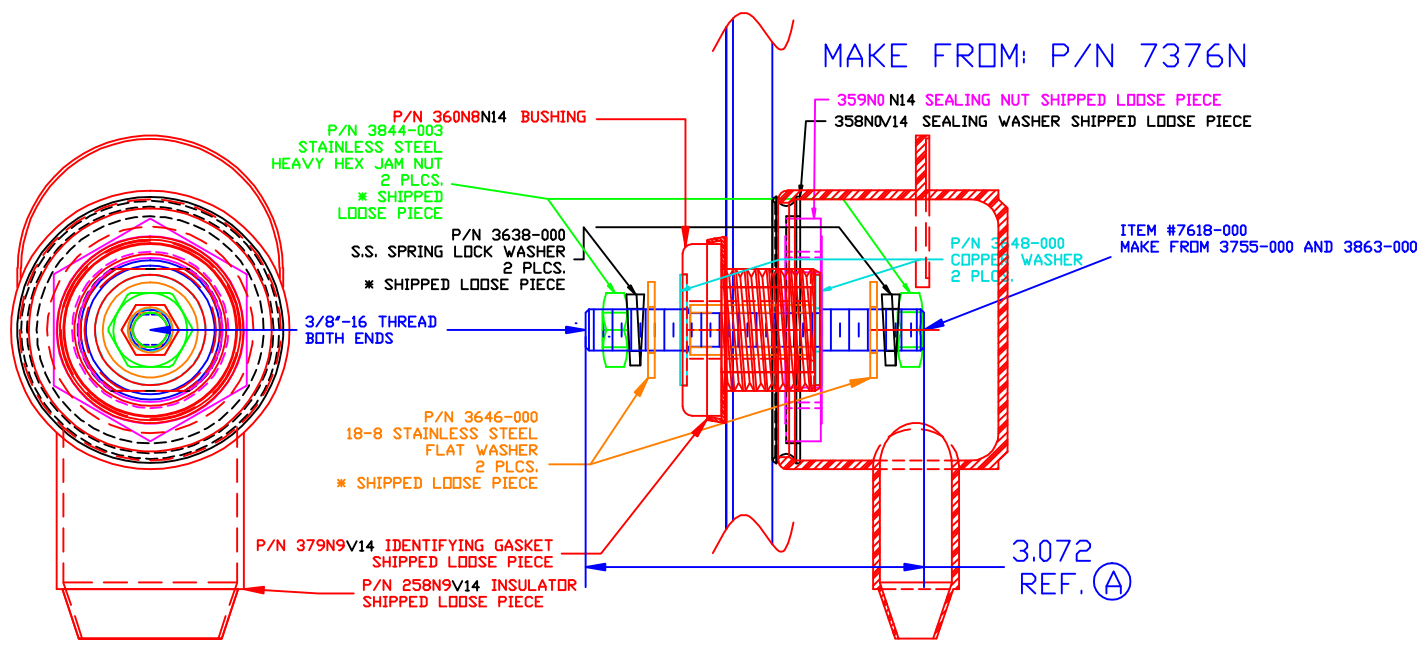


THE INFORMATION CONTAINED IN THIS DRAWING IS THE SOLE PROPERTY OF VTE INCORPORATED. ANY REPRODUCTION IN PART OR WHOLE WITHOUT THE WRITTEN PERMISSION OF VTE INCORPORATED IS PROHIBITED.

| | | |
|------|-----------------|---------|
| LTR. | REVISIONS | DATE |
| ⌒ | 3.072 WAS 3.250 | 27JUL10 |

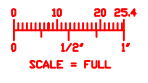


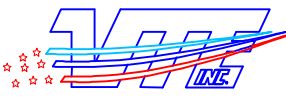
MAXIMUM FASTENER TORQUES:
 JAM NUTS: 15 FT./LBS. (180 IN./LBS.)
 SEALING NUT: 10 FT./LBS. (120 IN./LBS.)

CURRENT CARRYING CAPACITY: 550 AMPS @ 12VDC

BASE MATERIAL: GLASS-REINFORCED NYLON
 BASE MATERIAL U.L. RATING: 94 HB
 VTE MATERIAL P/N: 111210514

TOLERANCE UNLESS OTHERWISE SPECIFIED:
 MOLDED PRODUCTS ONLY: ±0.30°/±0.8mm
 HARDWARE ITEMS: ±0.010°/±0.25mm
 RADIAL DIAMETERS TO BE MEASURED OVER MANDRELS,
 RING GAGES OR PIN GAGES OF SUITABLE SIZE





VTE Incorporated
 5437 Robinson Road, P.O. Box 790
 Pellston, Michigan 49769
 Telephone: 1-800-527-9256, 231-539-8000
 FAX: 231-539-0914

| | | | |
|---|----------------|--------------|-------------|
| REF: *** | DATE: 28MAY09 | DRN BY: BRH | WEIGHT: *** |
| TITLE: POWER BUSHING, COPPER CORE 550 AMP | | | SCALE: |
| MATERIAL: | | PART NO. | |
| COLOR: *** | DRG CLASS: *** | CCB376N0N14W | |