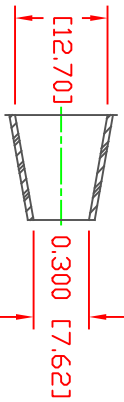
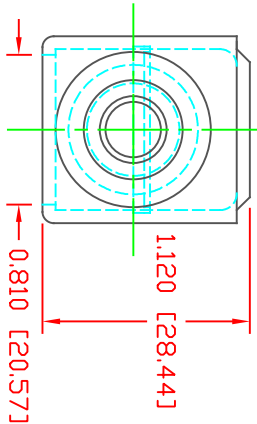
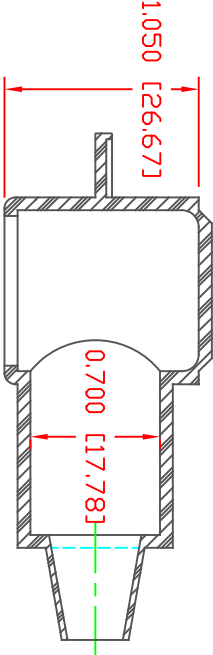


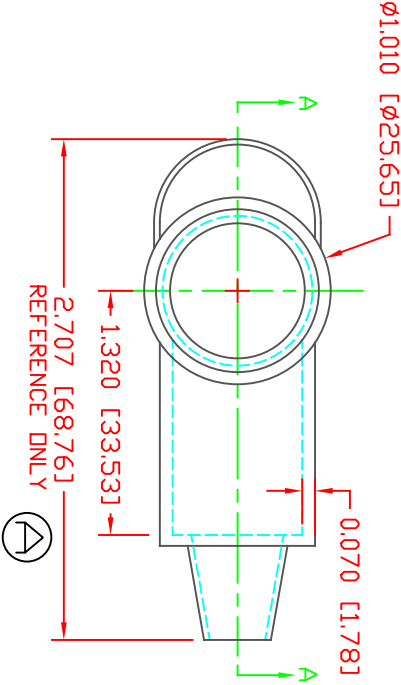
THE INFORMATION CONTAINED IN THIS DRAWING IS THE SOLE PROPERTY OF VTE INCORPORATED. ANY REPRODUCTION IN PART OR WHOLE WITHOUT THE WRITTEN PERMISSION OF VTE INCORPORATED IS PROHIBITED. VTE MAKES NO WARRANTY, EXPRESSED OR IMPLIED, AS TO THE SUITABILITY OF A PRODUCT FOR ANY INTENDED USE. THE CUSTOMER SHALL BEAR THE SOLE RESPONSIBILITY OF DETERMINING THE SUITABILITY OF ANY VTE PRODUCT FOR ITS END USE.

LTR.	REVISIONS	DATE	INT.
✓	ADDED REFERENCE DIMENSION	02-25-16	RAS
IB	.071 WAS .06; .76 WAS .8	02-28-17	JMM



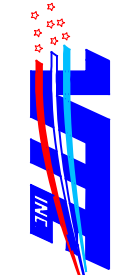
SECTION A-A
TYP. WALL THICKNESS = .071" [1.800]
SEAL NO. 2 SHOWN

SEAL THICKNESS = .030" [7.6]
ND. 2
Cable Gauges
8 - 2



MATERIAL PART NO: 1101700114
MATERIAL: PVC
VENDOR PART NO: 7843-70-BLACK
SHORE DUREMETER: "A" 10 SEC. 70
SPECIFIC GRAVITY: 1.34
ULT. ELONGATION %: 350
MELTING TEMP: 320-340 F [160-171 C]
BRITTLE TEMP: -22 F [-30 C]
Tensile Strength PSI: 1500
Dielectric Strength, v./mil: 500
U.L. Rating: V0

SCALE FACTOR: NONE
ALL DIMENSIONS GIVEN AS: in [mm]
TOLERANCES UNLESS OTHERWISE SPECIFIED:
MOLDED PARTS: ±.030" [±0.8mm]
ALL ANGLES ARE ± 1 DEGREE



VTE Incorporated
5437 Robinson Road, P.O. Box 790
Pellston, Michigan 49769
Telephone: 1-800-527-9256, 231-539-8000
FAX: 231-539-0914

REF:	DATE:	DRN BY:	JC	WEIGHT:	
	03-24-98	CHK'D BY:	JC	.022 LBS [9.96 g]	
TITLE:	TERMINAL INSULATOR CAP				
MATERIAL:	PVC	PART NO:			
COLOR:	BLACK	DRG CLASS	REV B	222N2F14	

DD NOT SCALE