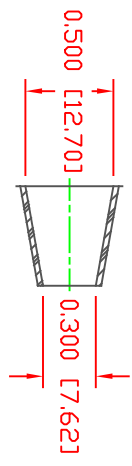
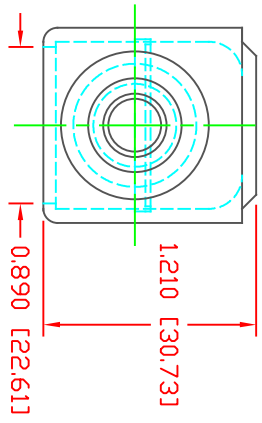
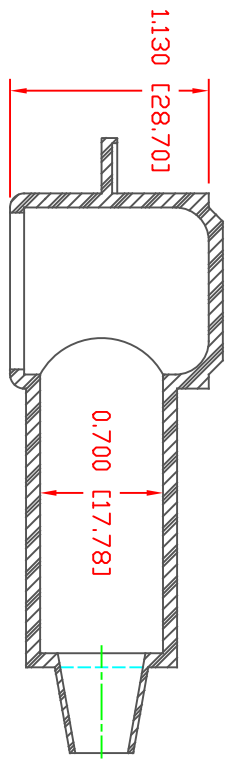


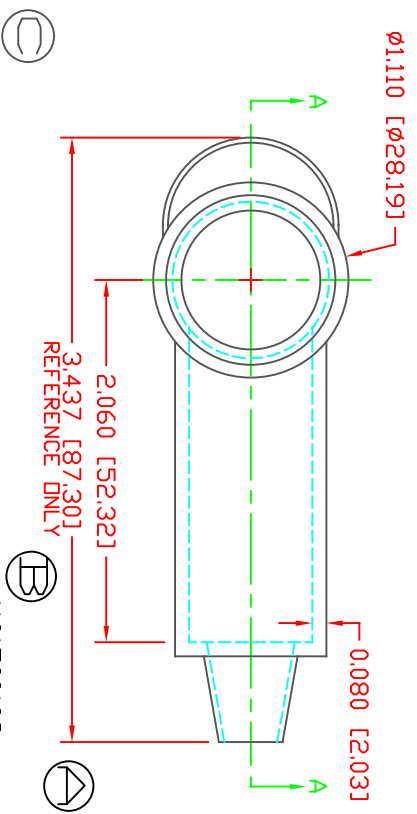
THE INFORMATION CONTAINED IN THIS DRAWING IS THE SOLE PROPERTY OF VTE INCORPORATED. ANY REPRODUCTION IN PART OR WHOLE WITHOUT THE WRITTEN PERMISSION OF VTE INCORPORATED IS PROHIBITED. VTE MAKES NO WARRANTY, EXPRESSED OR IMPLIED, AS TO THE SUITABILITY OF A PRODUCT FOR ANY INTENDED USE. THE CUSTOMER SHALL BEAR THE SOLE RESPONSIBILITY OF DETERMINING THE SUITABILITY OF ANY VTE PRODUCT FOR ITS END USE.



SECTION A-A  
 TYP. WALL THICKNESS = .080" [2.0]  
 SEAL ND. 2 SHOWN

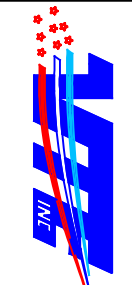
SEAL THICKNESS = .030" [.8]

ND. 2  
 Cable Gages  
 8 - 2



MATERIAL PART NO: 1101700109  
 MATERIAL: BLUE PVC  
 VENDOR PART NO: 7844-70  
 SPECIFIC GRAVITY: 1.36  
 HARDNESS 10 SEC: A  
 HARDNESS SCALE: 1100  
 TENSILE STRENGTH, PSI: 310  
 ELONGATION, %: 200  
 TEAR STRENGTH, PPI: HB  
 FLAME CLASS UL: 320-340 [160-171]  
 MELT TEMP., DEGREES F [C]: N/A  
 DIELECTRIC STRENGTH, V./MIL: N/A

SCALE FACTOR: NONE  
 ALL DIMENSIONS GIVEN AS: IN [MM]  
 TOLERANCES UNLESS OTHERWISE SPECIFIED:  
 MOLDED PARTS: ±.030" [±0.8mm]  
 ALL ANGLES ARE ± 1 DEGREE



VTE Incorporated  
 5437 Robinson Road, P.O. Box 790  
 Pellston, Michigan 49769  
 Telephone: 1-800-527-9256, 231-539-8000  
 FAX: 231-539-0914

DD NOT SCALE

LR.	REVISIONS	DATE	INT.
A	REVISED TO AGREE WITH PARTS AS MANUFACTURED	08-24-14	BRH
B	ADDED REFERENCE DIMENSION	02-25-16	RAS
C	UPDATED BLUE MATERIAL INFORMATION	08-01-22	RAS

REF:	DATE:	DRN BY:	JC	WEIGHT:	
CUSTOMER DIMS	03-24-98	CHK'D BY:	JC	.035 LBS [15.9 g]	
TITLE: TERMINAL INSULATOR CAP					
MATERIAL:	PVC	PART NO:		224E2V09	
COLOR:	BLUE	DRG CLASS	REV C		