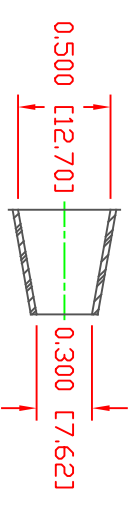
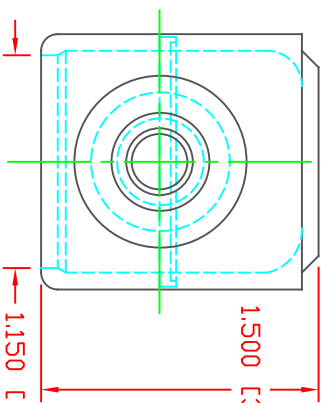
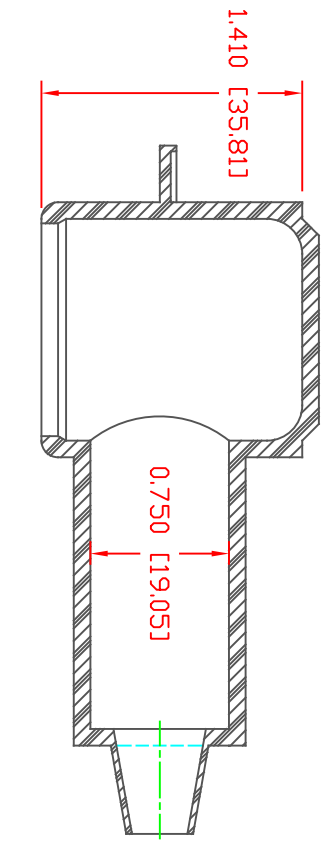
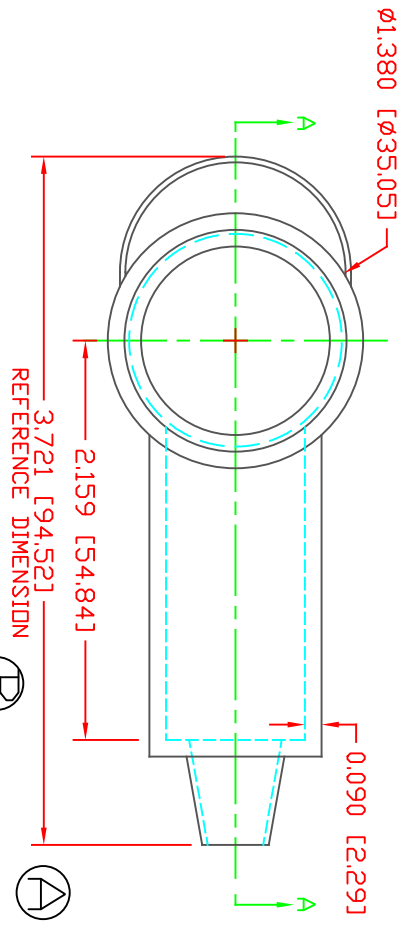


THE INFORMATION CONTAINED IN THIS DRAWING IS THE SOLE PROPERTY OF VTE INCORPORATED. ANY REPRODUCTION IN PART OR WHOLE WITHOUT THE WRITTEN PERMISSION OF VTE INCORPORATED IS PROHIBITED. VTE MAKES NO WARRANTY, EXPRESSED OR IMPLIED, AS TO THE SUITABILITY OF A PRODUCT FOR ANY INTENDED USE. THE CUSTOMER SHALL BEAR THE SOLE RESPONSIBILITY OF DETERMINING THE SUITABILITY OF ANY VTE PRODUCT FOR ITS END USE.



SECTION A-A  
 TYP. WALL THICKNESS = .090" [2.3]  
 SEAL ND. 2 SHOWN

SEAL THICKNESS = .030" [8]  
 ND. 2  
 Cable Gages  
 8 - 2



(C)

(B)

(A)

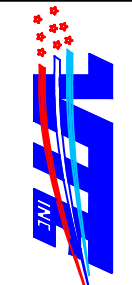
MATERIAL PART NO:  
 MATERIAL:  
 VENDOR PART NO:  
 SPECIFIC GRAVITY:  
 HARDNESS 10 SEC:  
 HARDNESS SCALE:  
 TENSILE STRENGTH, PSI:  
 ELONGATION, %:  
 TEAR STRENGTH, PPI:  
 FLAME CLASS UL:  
 MELT TEMP., DEGREES F [C]:  
 DIELECTRIC STRENGTH, V./MIL:

1101700109  
 BLUE PVC  
 7844-70 BLUE 1812  
 1.36  
 70  
 A  
 1100  
 310  
 200  
 HB  
 320-340 [160-171]  
 N/A

DD NOT SCALE

LR.	REVISIONS	DATE	INT.
A	UPDATED DIMENSION 94.5 WAS 96.8	12-05-12	JC
B	ADDED REFERENCE DIMENSION	02-25-16	RAS
C	UPDATED BLUE MATERIAL INFORMATION	08-01-22	RAS

ALL DIMENSIONS GIVEN AS: In [mm]  
 MOLDED PARTS: ±.030" [±0.8mm]  
 HARDWARE ITEMS: ±.010" [±0.25mm]



VTE Incorporated  
 5437 Robinson Road, P.O. Box 790  
 Pellston, Michigan 49769  
 Telephone: 1-800-527-9256, 231-539-8000  
 FAX: 231-539-0914

REF:	DATE:	DRN BY:	JC	WEIGHT:
CUSTOMER DIMS	03-24-98	CHK'D BY:	JC	.052 LBS [23.6 g]
TITLE: TERMINAL INSULATOR CAP				
MATERIAL:	PVC	PART NO: 230E2V09		
COLOR:	BLUE	DRG CLASS	REV C	