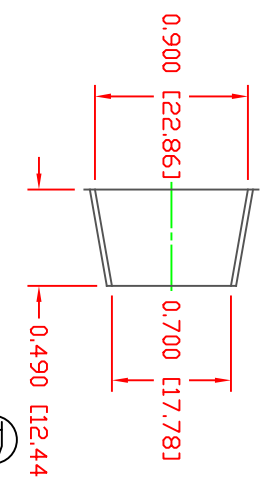
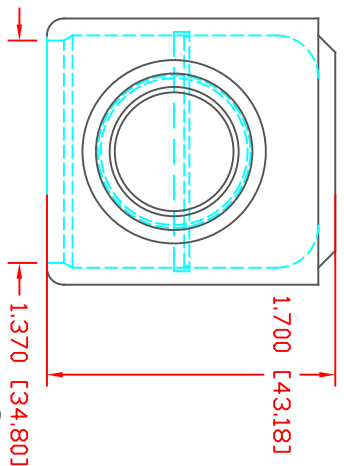
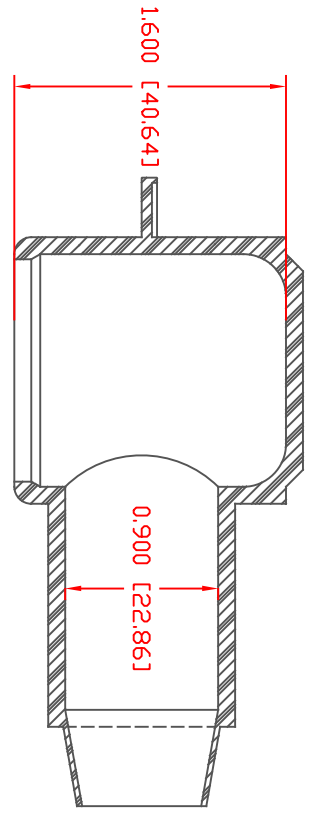


THE INFORMATION CONTAINED IN THIS DRAWING IS THE SOLE PROPERTY OF VTE INCORPORATED. ANY REPRODUCTION IN PART OR WHOLE WITHOUT THE WRITTEN PERMISSION OF VTE INCORPORATED IS PROHIBITED. VTE MAKES NO WARRANTY, EXPRESSED OR IMPLIED, AS TO THE SUITABILITY OF A PRODUCT FOR ANY INTENDED USE. THE CUSTOMER SHALL BEAR THE SOLE RESPONSIBILITY OF DETERMINING THE SUITABILITY OF ANY VTE PRODUCT FOR ITS END USE.

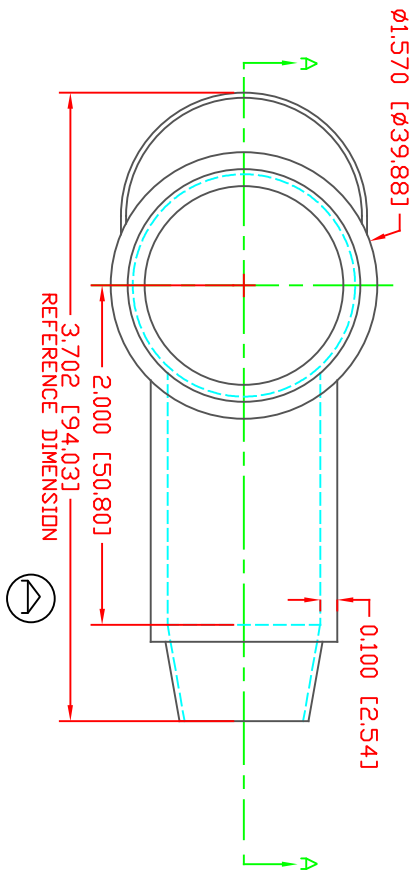
TR	REVISIONS	DATE	INT.
A	ADDED REFERENCE DIMENSION	02-25-16	RAS
B	REVISED DIMENSION FROM 1.310 [33.27]	03-08-18	RAS
C	UPDATED CABLE GAUGES FROM 2/0 - 4/0	03-28-18	RAS
D	REVISED FROM 0.567 [14.40]	07-3-24	RAS



SECTION A-A
TYP. WALL THICKNESS = .100" [2.5]

SEAL THICKNESS = .030" [.8]


ND. 4
Cable Gauges
3/0 - 4/0



MATERIAL PART NO: 1101650102
MATERIAL: PVC
VENDOR PART NO: 9812-65-RED 683
SHORE DUREMETER: 'A' 10 SEC. 65
SPECIFIC GRAVITY: 1.34
ULT. ELONGATION %: 400
MELTING TEMP: 315-335 F [157-168 C]
BRITTLE TEMP: -54 F [-48 C]
Tensile Strength PSI: 1550 PSI
Dielectric Strength, v./mil: 511 V/2

1101650102
PVC
9812-65-RED 683
'A' 10 SEC. 65
1.34
400
315-335 F [157-168 C]
-54 F [-48 C]
1550 PSI
511 V/2

ALL DIMENSIONS GIVEN AS: In [mm]
MOLDED PARTS: ±.030" [±0.8mm]
HARDWARE ITEMS: ±.010" [±0.25mm]



VTE Incorporated
5437 Robinson Road, P.O. Box 790
Pellston, Michigan 49769
Telephone: 1-800-527-9256, 231-539-8000
FAX: 231-539-0914

REF:	DATE:	DRN BY:	JC	WEIGHT:
CUSTOMER DIMS	03-25-98	CHK'D BY:	JC	067 LBS [30.2 g]
TITLE: TERMINAL INSULATOR CAP				
MATERIAL:	PVC	PART NO: 234N4V02		
COLOR:	RED	DRG CLASS	REV D	

DD NOT SCALE