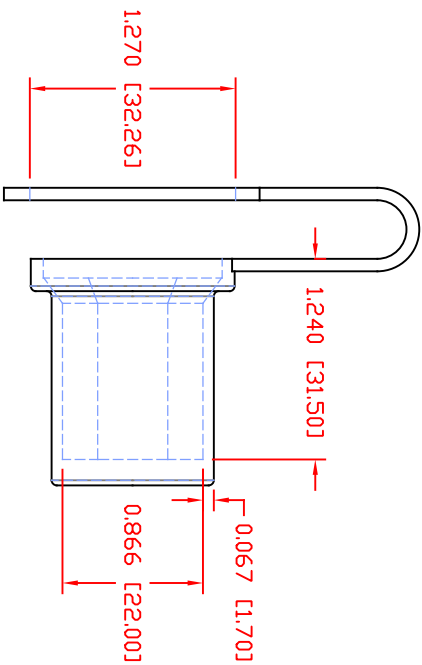
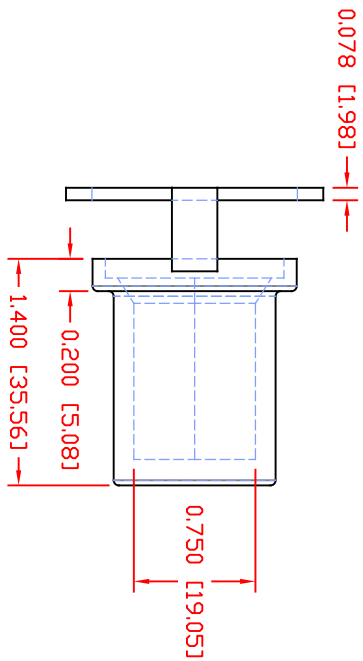
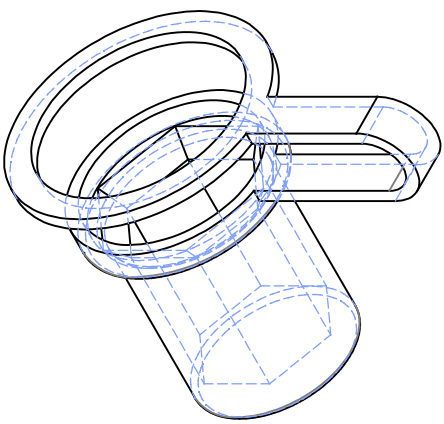
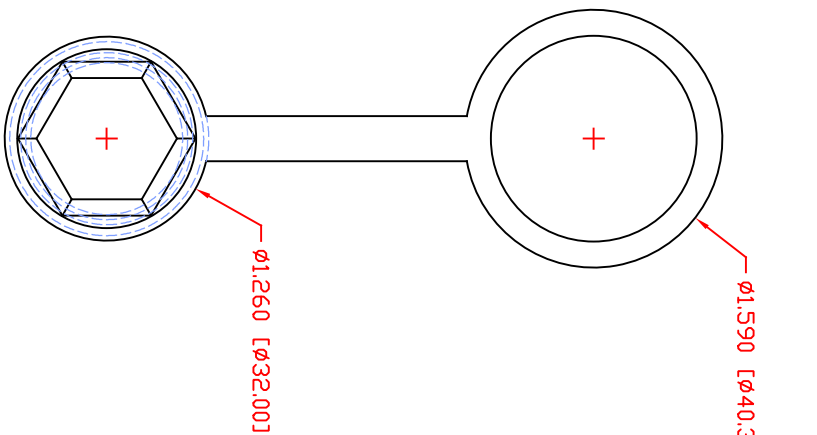


THE INFORMATION CONTAINED IN THIS DRAWING IS THE SOLE PROPERTY OF VTE INCORPORATED. ANY REPRODUCTION IN PART OR WHOLE WITHOUT THE WRITTEN PERMISSION OF VTE INCORPORATED IS PROHIBITED. VTE MAKES NO WARRANTY, EXPRESSED OR IMPLIED, AS TO THE SUITABILITY OF A PRODUCT FOR ANY INTENDED USE. THE CUSTOMER SHALL BEAR THE SOLE RESPONSIBILITY OF DETERMINING THE SUITABILITY OF ANY VTE PRODUCT FOR ITS END USE.

LTR	REVISIONS	DATE	INT.
1	DIA 1115 WAS 1.250, DIA 1575 WAS 1.775	11-19-08	BRH
B	REBORN AND UPDATED (ORIGINAL DRAWING 6-20-08)	6-12-19	RAS



< INSTALLED VIEW >

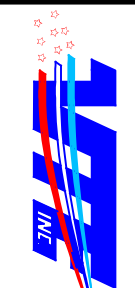


SCALE FACTOR : NONE
 ALL DIMENSIONS GIVEN AS: In [mm]
 TOLERANCES UNLESS OTHERWISE SPECIFIED :
 MOUNDED PARTS: ±0.30° [±0.8mm]
 ALL ANGLES ARE ± 1 DEGREE

VTE PART NO: 1101650102
 MATERIAL: PVC
 VENDOR PART NO: 9812-65-RED 683
 SHORE DUREMETER: "A" 10 SEC. 65
 SPECIFIC GRAVITY: 1.34
 ULT. ELONGATION %: 400
 MELTING TEMP: 315-335 F [157-168 C]
 BRITTLE TEMP: -54 F [-48 C]
 Tensile Strength PSI: 1550 PSI
 Dielectric Strength, v./mil: 511 V2
 UL Rating:

1101650102
 PVC
 9812-65-RED 683
 "A" 10 SEC. 65
 1.34
 400
 315-335 F [157-168 C]
 -54 F [-48 C]
 1550 PSI
 511
 V2

DO NOT SCALE



VTE Incorporated
 5437 Robinson Road, P.O. Box 790
 Pellston, Michigan 49769
 Telephone: 1-800-527-9256, 231-539-8000
 FAX: 231-539-0914

REF.	DATE	DRN BY:	RAS	WEIGHT:
CUSTOMER DIMS	06-12-19	CHK'D BY:	PUK	.035 LBS [15.9 g]
TITLE: JUMPER BUSHING INSULATOR				
MATERIAL:	PVC	PART NO: 319N9V02		
COLOR:	RED	DRG CLASS	REV B	