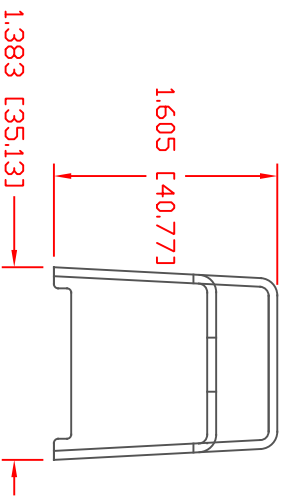
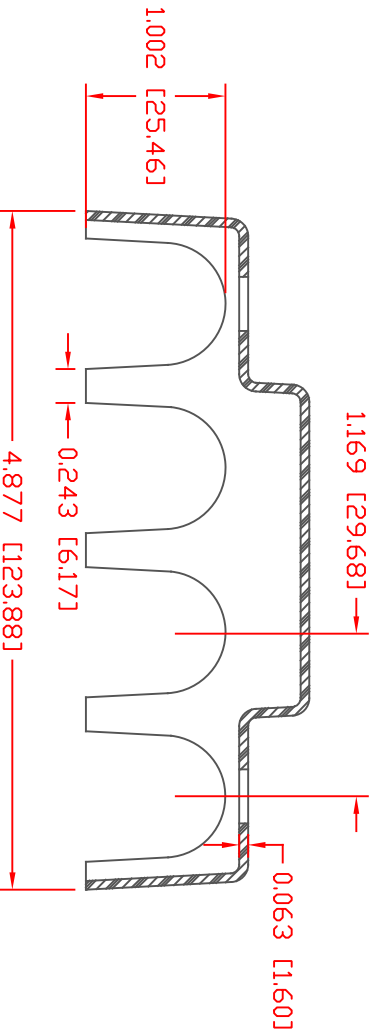
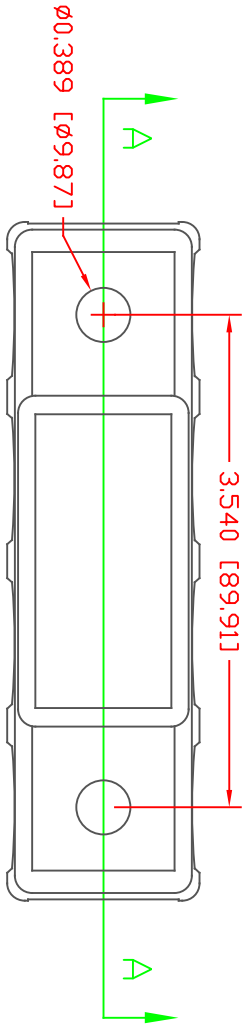


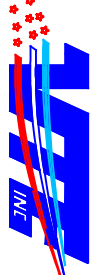
THE INFORMATION CONTAINED IN THIS DRAWING IS THE SOLE PROPERTY OF VTE INCORPORATED. ANY REPRODUCTION IN PART OR WHOLE WITHOUT THE WRITTEN PERMISSION OF VTE INCORPORATED IS PROHIBITED. VTE MAKES NO WARRANTY, EXPRESSED OR IMPLIED, AS TO THE SUITABILITY OF A PRODUCT FOR ANY INTENDED USE. THE CUSTOMER SHALL BEAR THE SOLE RESPONSIBILITY OF DETERMINING THE SUITABILITY OF ANY VTE PRODUCT FOR ITS END USE.



MATERIAL PART NO: 1209650315
 MATERIAL: POLYPROPYLENE
 VENDOR PART NO: MAFILL CR HT 5641
 ASH FILLER CONTENT: 38%
 TENSILE STRENGTH, YIELD: 33 MPa
 DENSITY (G/CM³): 1.25
 NOTCHED IZOD IMPACT: 0.6 ft-lb/in
 FLAME CLASS UL: 13 g/10 min
 HB

LTR.	REVISIONS	DATE	INT.
A	FIXED DRAWING SCALE TO SHOW APPROPRIATE DIMENSIONS	4-27-17	JMM
B	UPDATED MATERIAL INFORMATION FOR POLYPROPYLENE	8-15-22	RAS

SCALE FACTOR : NONE
 ALL DIMENSIONS GIVEN AS: In. [mm]
 TOLERANCES UNLESS OTHERWISE SPECIFIED :
 MOLDED PARTS: ±.030" [±0.8mm]
 ALL ANGLES ARE ± 1 DEGREE



VTE Incorporated
 5437 Robinson Road, P.O. Box 790
 Pellston, Michigan 49769
 Telephone: 1-800-527-9256, 231-539-8000
 FAX: 231-539-0914

REF:	DATE:	DRN BY:	BRH	WEIGHT:
CUSTOMER DIM	08-16-10	CHK'D BY:	BRH	.039 LBS [17.5 g]
TITLE: COVER, 4 POINT TERMINAL BUSBAR				
MATERIAL:	POLYPROPYLENE	PART NO: 323N9P02		
COLOR:	RED	DRG CLASS	REV B	

DD NOT SCALE