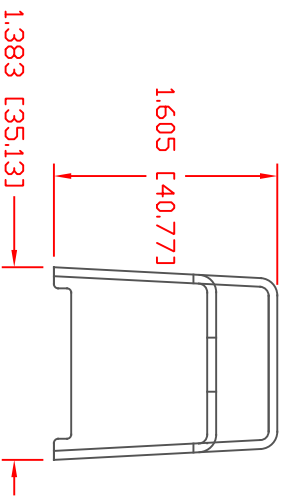
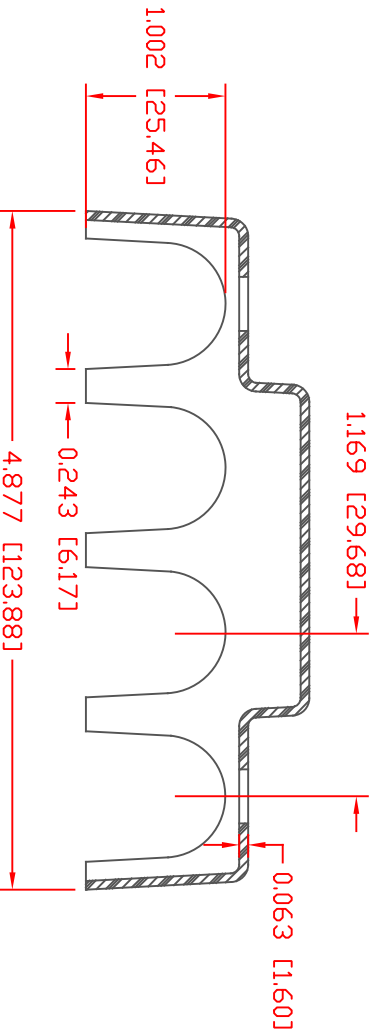
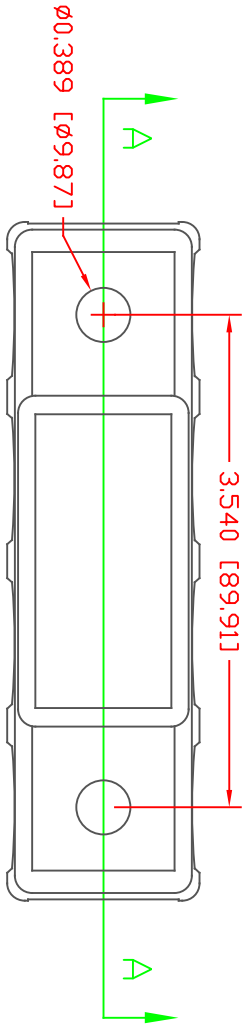


THE INFORMATION CONTAINED IN THIS DRAWING IS THE SOLE PROPERTY OF VTE INCORPORATED. ANY REPRODUCTION IN PART OR WHOLE WITHOUT THE WRITTEN PERMISSION OF VTE INCORPORATED IS PROHIBITED. VTE MAKES NO WARRANTY, EXPRESSED OR IMPLIED, AS TO THE SUITABILITY OF A PRODUCT FOR ANY INTENDED USE. THE CUSTOMER SHALL BEAR THE SOLE RESPONSIBILITY OF DETERMINING THE SUITABILITY OF ANY VTE PRODUCT FOR ITS END USE.




SECTION A-A

VTE PART NO: 1209720314  
 MATERIAL: POLYPROPYLENE  
 SHORE DUREMETER: 73 D  
 SPECIFIC GRAVITY: 1.26  
 ULT. ELONGATION %: 2.5  
 MELTING TEMP: 550 F [288 C]  
 Tensile Strength PSI: 4300

LTR.	REVISIONS	DATE	INT.
A	FIXED DRAWING SCALE TO SHOW APPROPRIATE DIMENSIONS	4-27-17	JMM
B	UPDATED MATERIAL INFORMATION FOR POLYPROPYLENE	8-15-22	RAS

SCALE FACTOR : NONE  
 ALL DIMENSIONS GIVEN AS IN [mm]  
 TOLERANCES UNLESS OTHERWISE SPECIFIED :  
 MOLDED PARTS: ±.030" [±0.8mm]  
 ALL ANGLES ARE ± 1 DEGREE



VTE Incorporated  
 5437 Robinson Road, P.O. Box 790  
 Pellston, Michigan 49769  
 Telephone: 1-800-527-9256, 231-539-8000  
 FAX: 231-539-0914

REF:	DATE:	DRN BY:	BRH	WEIGHT:
CUSTOMER DIM	08-16-10	CHK'D BY:	BRH	.039 LBS [17.5 g]
TITLE: COVER, 4 POINT TERMINAL BUSBAR				
MATERIAL: POLYPROPYLENE		PART NO: 323N9P14		
COLOR: BLACK		DRG CLASS REV B		

DD NOT SCALE