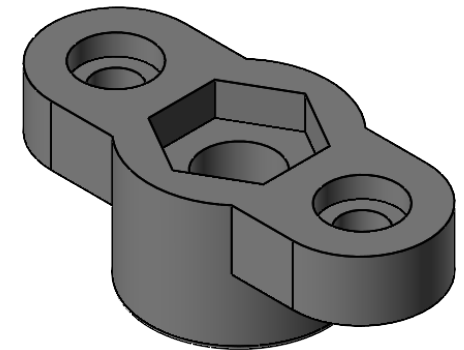
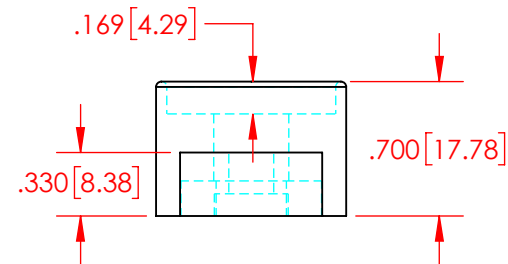
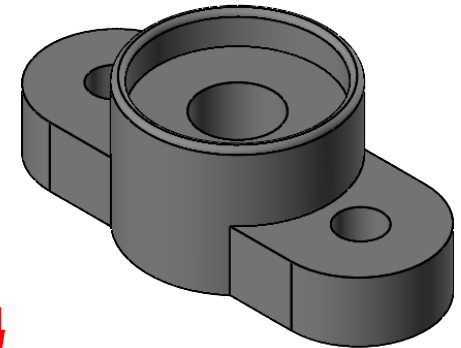
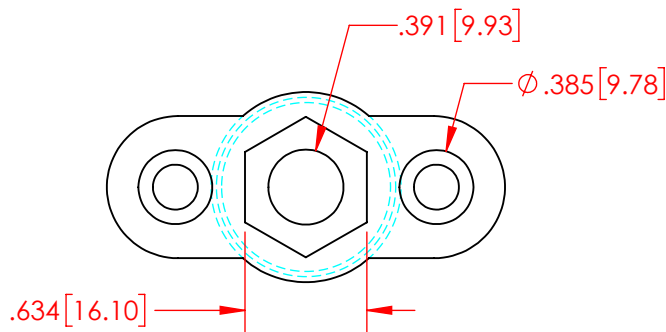
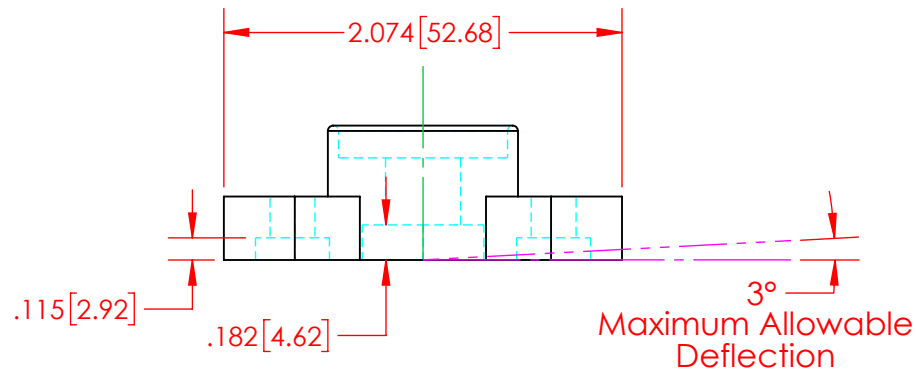
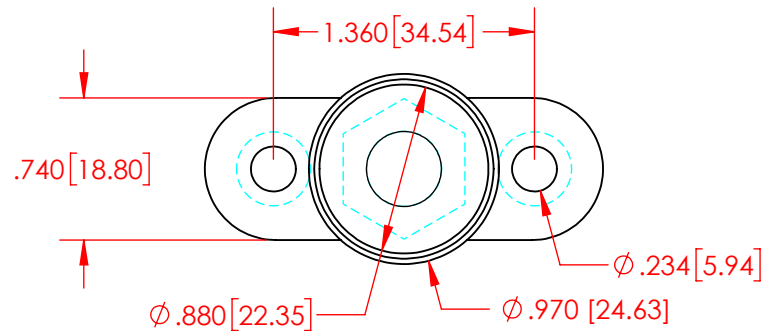


REVISIONS			
REV.	DESCRIPTION	DATE	APPROVED
A	Redrawn in Solidworks	7/3/2024	RAS
B	Added "Allowable Deflection" Note	7/3/2024	RAS



MATERIAL PART NO:  
MATERIAL:  
VENDOR PART NO:  
SPECIFIC GRAVITY:  
MELTING POINT DEGREES F:  
MELTING POINT DEGREES C:  
MAXIMUM ACCEPTABLE  
MOISTURE CONTENT:  
FLAME RATING:

1111210514UL  
GLASS FILLED NYLON  
HYLON N2015 HL BK  
1.23  
515  
268  
.2%  
UL 94 HB

Part Weight: 0.033 Lbs. [15.2 g]  
Part Color : Black

ALL DIMENSIONS GIVEN AS : INCH [METRIC]  
TOLERANCES UNLESS OTHERWISE SPECIFIED :  
MOLDED PRODUCTS :  $\pm .030$ " /  $\pm 0.8$ mm

PRINTED COPIES ARE NOT CONTROLLED

**PROPRIETARY AND CONFIDENTIAL**

THE INFORMATION CONTAINED IN THIS  
DRAWING IS THE SOLE PROPERTY OF  
VTE INCORPORATED. ANY REPRODUCTION  
IN PART OR AS A WHOLE WITHOUT THE WRITTEN  
PERMISSION OF VTE INCORPORATED PROHIBITED.



**VTE INCORPORATED**

5437 Robinson Road, P.O. Box 790  
Pellston, Michigan 49769 USA  
Telephone : 1-800-527-9256, 231-539-8000  
Fax : 231-539-0914, EFax : 231-344-5914

REV **B**  
SIZE **A**

NAME	DATE
DRAWN BY: RAS	7-3-24
CHECKED BY:	
DO NOT SCALE DRAWING	

TITLE: 3/8" Pass Thru Power Post Base

DWG. NO. **327D7N14**