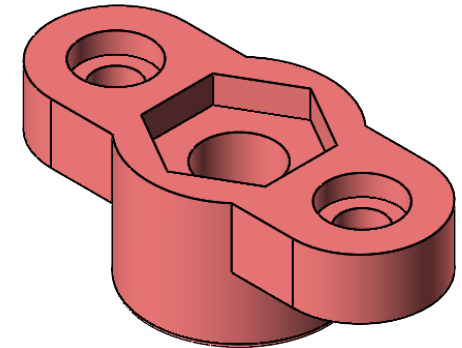
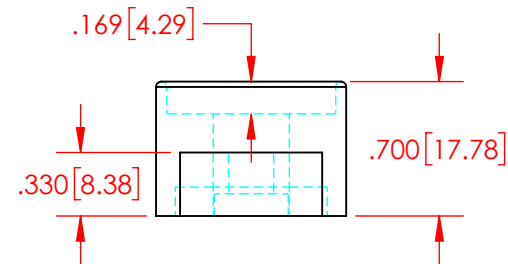
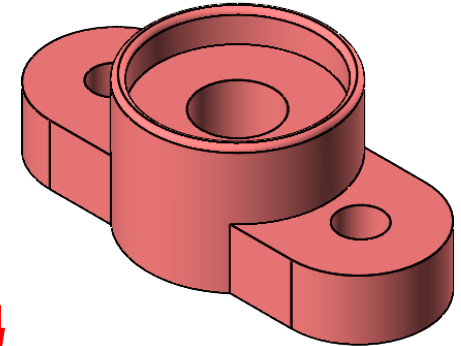
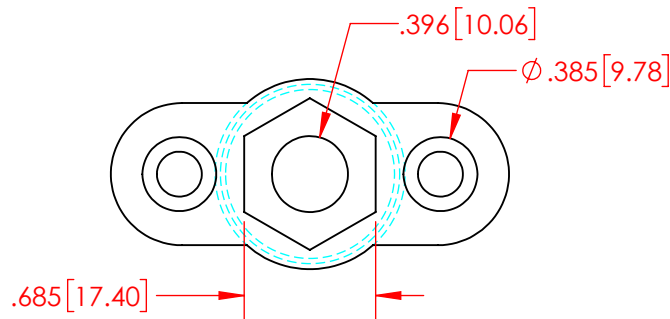
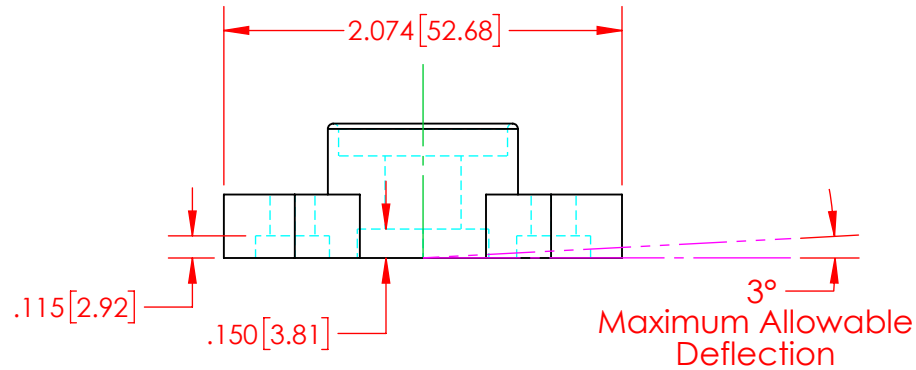
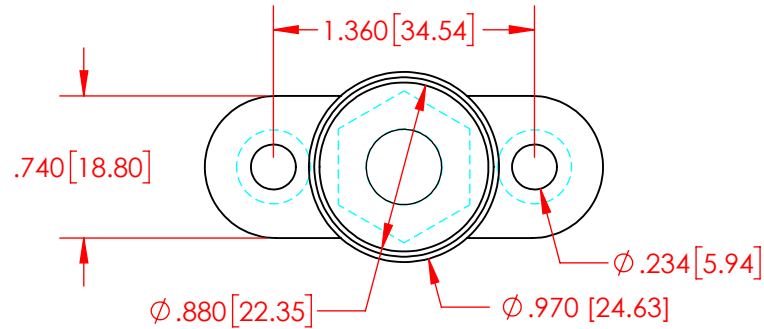


REVISIONS			
REV.	DESCRIPTION	DATE	APPROVED
A	Redrawn in Solidworks	7/3/2024	RAS
B	Added "Allowable Deflection" Note	7/3/2024	RAS



MATERIAL PART NO:
MATERIAL:
VENDOR PART NO:
SPECIFIC GRAVITY:
MELTING POINT DEGREES F:
MELTING POINT DEGREES C:
MAXIMUM ACCEPTABLE
MOISTURE CONTENT:
FLAME RATING:

7111210502
GLASS FILLED NYLON
HYLON N2015 HL NAT
1.23
515
268
.2%
UL 94 HB

Part Weight: 0.021 Lbs. [9.6 g]
Part Color : Red

ALL DIMENSIONS GIVEN AS : INCH [METRIC]
TOLERANCES UNLESS OTHERWISE SPECIFIED :
MOLDED PRODUCTS : $\pm .030$ " / ± 0.8 mm

PRINTED COPIES ARE NOT CONTROLLED

PROPRIETARY AND CONFIDENTIAL

THE INFORMATION CONTAINED IN THIS
DRAWING IS THE SOLE PROPERTY OF
VTE INCORPORATED. ANY REPRODUCTION
IN PART OR AS A WHOLE WITHOUT THE WRITTEN
PERMISSION OF VTE INCORPORATED IS PROHIBITED.



VTE INCORPORATED

5437 Robinson Road, P.O. Box 790
Pellston, Michigan 49769 USA
Telephone : 1-800-527-9256, 231-539-8000
Fax : 231-539-0914, Efax : 231-344-5914

REV **B**
SIZE **A**

NAME	DATE
DRAWN BY: RAS	7-3-24
CHECKED BY:	
DO NOT SCALE DRAWING	

TITLE: 10mm Pass Thru Power Post Base

DWG. NO. **327D8N02**