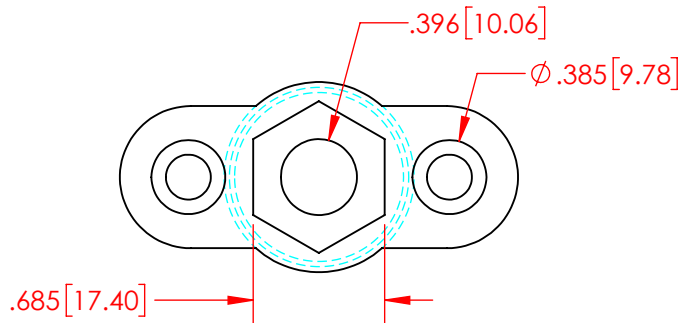
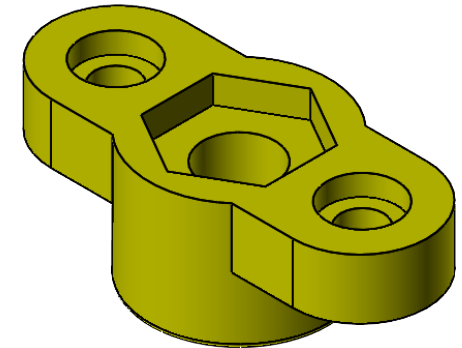
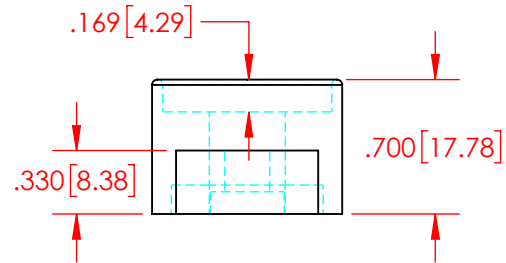
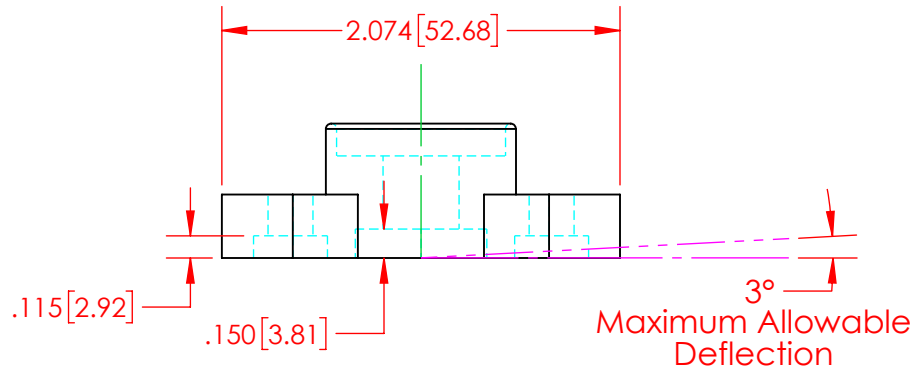
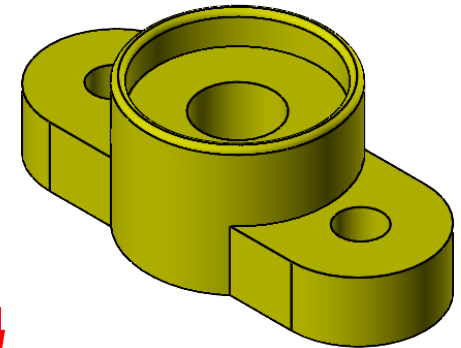
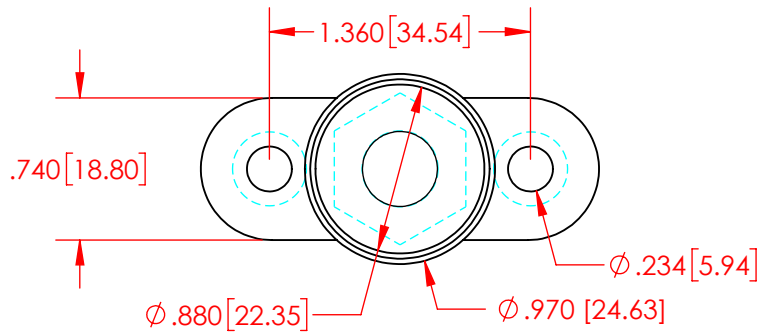


REVISIONS			
REV.	DESCRIPTION	DATE	APPROVED
A	Redrawn in Solidworks	7/3/2024	RAS
B	Added "Allowable Deflection" Note	7/3/2024	RAS



MATERIAL PART NO: 7111210505
 MATERIAL: GLASS FILLED NYLON
 VENDOR PART NO: HYLON N2015 HL NAT
 SPECIFIC GRAVITY: 1.23
 MELTING POINT DEGREES F: 515
 MELTING POINT DEGREES C: 268
 MAXIMUM ACCEPTABLE MOISTURE CONTENT: .2%
 FLAME RATING: UL 94 HB

Part Weight: 0.021 Lbs. [9.6 g]
 Part Color : Yellow

ALL DIMENSIONS GIVEN AS : INCH [METRIC]
 TOLERANCES UNLESS OTHERWISE SPECIFIED :
 MOLDED PRODUCTS : ±.030" / ±0.8mm

PRINTED COPIES ARE NOT CONTROLLED
PROPRIETARY AND CONFIDENTIAL
 THE INFORMATION CONTAINED IN THIS DRAWING IS THE SOLE PROPERTY OF VTE INCORPORATED. ANY REPRODUCTION IN PART OR AS A WHOLE WITHOUT THE WRITTEN PERMISSION OF VTE INCORPORATED IS PROHIBITED.



VTE INCORPORATED

5437 Robinson Road, P.O. Box 790
 Pellston, Michigan 49769 USA
 Telephone : 1-800-527-9256, 231-539-8000
 Fax : 231-539-0914, EFax : 231-344-5914

REV	B	NAME	DATE
SIZE	A	DRAWN BY:	RAS 7-3-24
		CHECKED BY:	
DO NOT SCALE DRAWING			

TITLE: 10mm Pass Thru Power Post Base
 DWG. NO. **327D8N05**