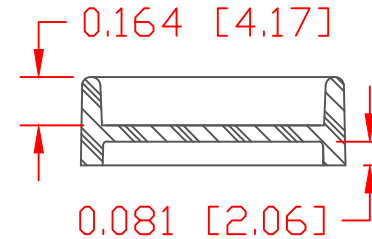
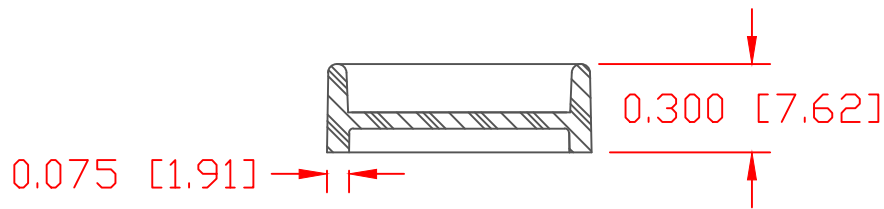
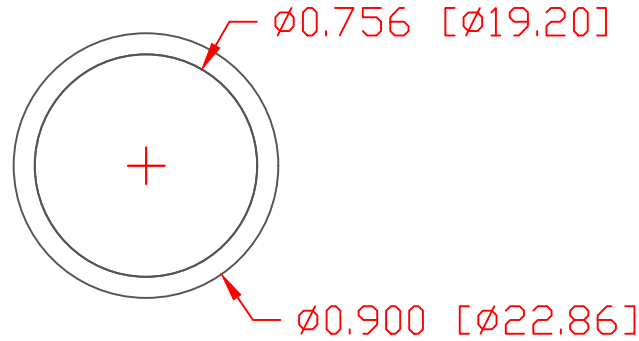


THE INFORMATION CONTAINED IN THIS DRAWING IS THE SOLE PROPERTY OF VTE INCORPORATED. ANY REPRODUCTION IN PART OR WHOLE WITHOUT THE WRITTEN PERMISSION OF VTE INCORPORATED IS PROHIBITED. VTE MAKES NO WARRANTY, EXPRESSED OR IMPLIED, AS TO THE SUITABILITY OF A PRODUCT FOR ANY INTENDED USE. THE CUSTOMER SHALL BEAR THE SOLE RESPONSIBILITY OF DETERMINING THE SUITABILITY OF ANY VTE PRODUCT FOR ITS END USE.


LTR.	REVISIONS	DATE	INT.
A	MATERIAL CHANGED FROM PVC 95 TO GFN	06-29-16	MDL
B	REVISED MATERIAL INFORMATION	07-17-18	RAS



SCALE FACTOR : NONE
 ALL DIMENSIONS GIVEN AS: in [mm]
 TOLERANCES UNLESS OTHERWISE SPECIFIED :
 MOLDED PARTS: ±.030" [±0.8mm]
 HARDWARE ITEMS: ±.010" [±0.25mm]

MATERIAL PART NO:	7111210509
MATERIAL:	GLASS FILLED NYLON
VENDOR PART NO:	HYLON N2015 HL NAT
SPECIFIC GRAVITY:	1.1
MAXIMUM ACCEPTABLE MOISTURE CONTENT:	.2%
MELTING POINT DEGREES C:	268
MELTING POINT DEGREES F:	515

DO NOT SCALE

		VTE Incorporated 5437 Robinson Road, P.O. Box 790 Pellston, Michigan 49769 Telephone: 1-800-527-9256, 231-539-8000 FAX: 231-539-0914	
		REF:	DATE:
CUSTOMER DIMS	26OCT05	CHK'D BY: BRH	.004 lbs [1.6g]
TITLE:		CAVITY PLUG	
MATERIAL: GLASS FILLED NYLON		PART NO.	
COLOR: BLUE	DRG CLASS: REV B	329N0N09	