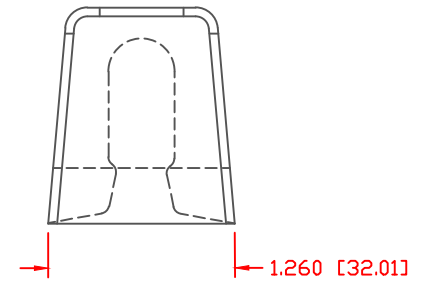
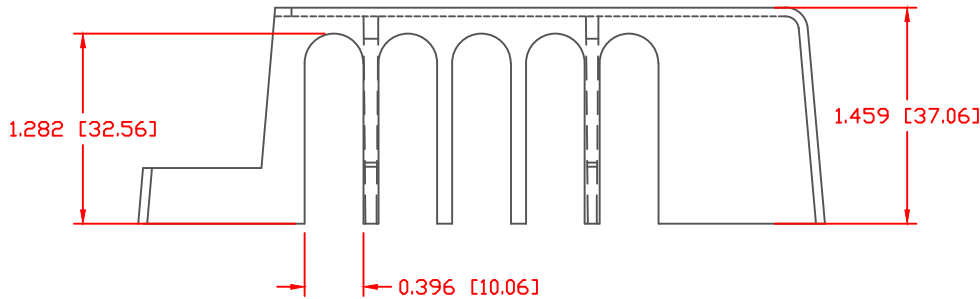
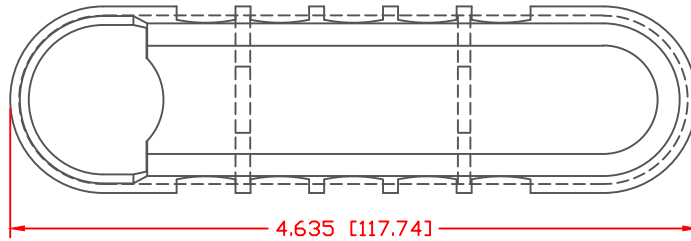


THE INFORMATION CONTAINED IN THIS DRAWING IS THE SOLE PROPERTY OF VTE INCORPORATED. ANY REPRODUCTION IN PART OR WHOLE WITHOUT THE WRITTEN PERMISSION OF VTE INCORPORATED IS PROHIBITED. VTE MAKES NO WARRANTY, EXPRESSED OR IMPLIED, AS TO THE SUITABILITY OF A PRODUCT FOR ANY INTENDED USE. THE CUSTOMER SHALL BEAR THE SOLE RESPONSIBILITY OF DETERMINING THE SUITABILITY OF ANY VTE PRODUCT FOR ITS END USE.

LTR.	REVISIONS	DATE	INT.



ALL DIMENSIONS GIVEN AS: In [mm]
 MOLDED PARTS: ±.030" [±0.8mm]
 HARDWARE ITEMS: ±.010" [±0.25mm]

VTE PART NO:	120750315
MATERIAL:	POLYPROPYLENE
SHORE DUROMETER:	75 D
SPECIFIC GRAVITY:	1.25
ULT. ELONGATION %:	2.5
MELTING TEMP:	324 F [162 C]
Tensile Strength PSI:	4250

	VTE Incorporated 5437 Robinson Road, P.O. Box 790 Pellston, Michigan 49769 Telephone: 1-800-527-9256, 231-539-8000 FAX: 231-539-0914	
	REF:	DATE:

CUSTOMER DIMS	05-20-08	DRN BY: BRH	WEIGHT:
		CHK'D BY: BRH	.032 LBS [14.5 g]

TITLE: COVER, TAB TYPE BUSBAR

MATERIAL: POLYPROPYLENE	PART NO.
COLOR: RED	335N9P02
DRG CLASS	

DO NOT SCALE