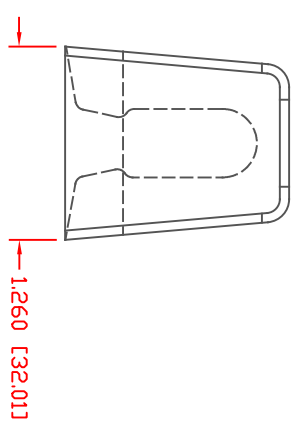
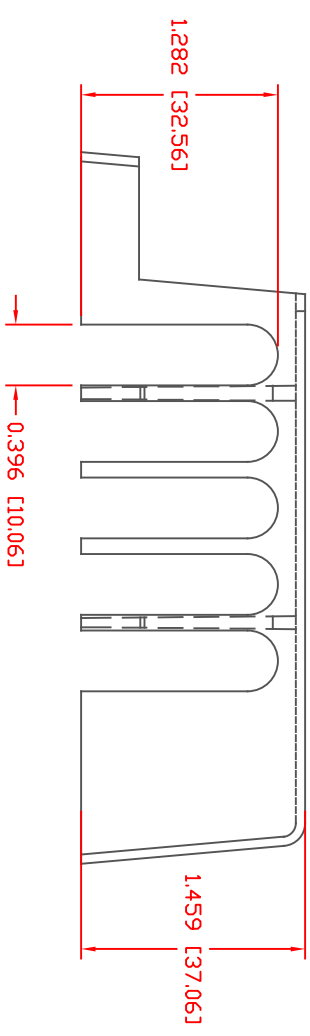
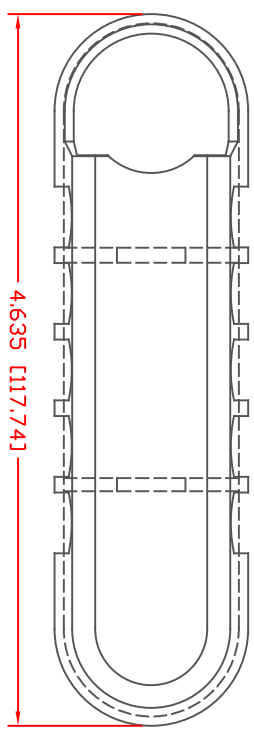
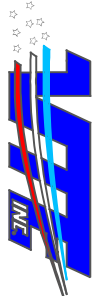


THE INFORMATION CONTAINED IN THIS DRAWING IS THE SOLE PROPERTY OF VTE INCORPORATED. ANY REPRODUCTION IN PART OR WHOLE WITHOUT THE WRITTEN PERMISSION OF VTE INCORPORATED IS PROHIBITED. VTE MAKES NO WARRANTY, EXPRESSED OR IMPLIED, AS TO THE SUITABILITY OF A PRODUCT FOR ANY INTENDED USE. THE CUSTOMER SHALL BEAR THE SOLE RESPONSIBILITY OF DETERMINING THE SUITABILITY OF ANY VTE PRODUCT FOR ITS END USE.



LTR.	REVISIONS	DATE	INT.
1	UPDATED MATERIAL INFORMATION FOR PDL YPRDPPYLENE	8-15-22	RAS

ALL DIMENSIONS GIVEN AS: in [mm]
 MOLDED PARTS: ±.030" [±0.8mm]
 HARDWARE ITEMS: ±.010" [±0.25mm]



VTE Incorporated
 5437 Robinson Road, P.O. Box 790
 Pellston, Michigan 49769
 Telephone: 1-800-527-9256, 231-539-8000
 FAX: 231-539-0914

MATERIAL PART NO: 1209650315
 MATERIAL: PDL YPRDPPYLENE
 VENDOR PART NO: MAFILL CR HT 5641
 ASH FILLER CONTENT: 38%
 TENSILE STRENGTH, YIELD: 33 MPa
 DENSITY (G/CM³): 1.25
 NOTCHED IZOD IMPACT: 0.6 ft-lb/in
 MFI (230DEG C /2.1kg): 13 g/10 min
 FLAME CLASS UL: HB

REF:	DATE:	DRN BY:	BRH	WEIGHT:
CUSTOMER DIMS	05-20-08	CHK'D BY:	BRH	.032 LBS [14.5 g]
TITLE:	COVER, TAB TYPE BUSBAR			
MATERIAL:	PDL YPRDPPYLENE	PART NO:	335N9P05	
COLOR:	YELLOW	DRG CLASS	REV A	

DO NOT SCALE