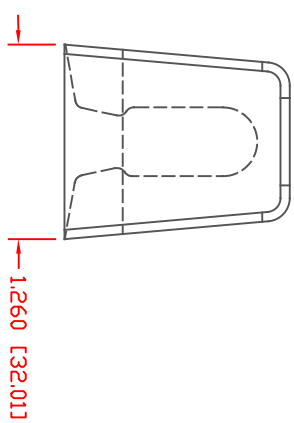
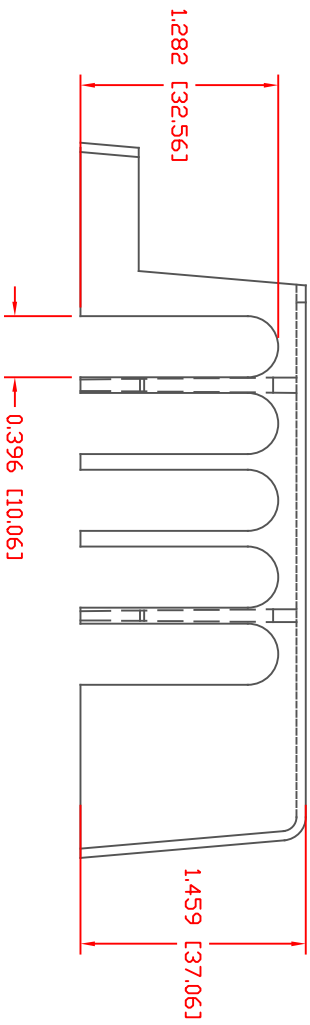
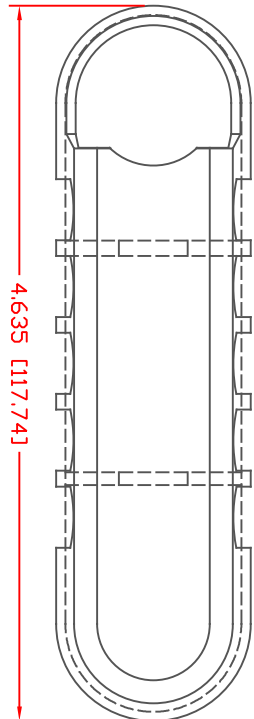


THE INFORMATION CONTAINED IN THIS DRAWING IS THE SOLE PROPERTY OF VTE INCORPORATED. ANY REPRODUCTION IN PART OR WHOLE WITHOUT THE WRITTEN PERMISSION OF VTE INCORPORATED IS PROHIBITED. VTE MAKES NO WARRANTY, EXPRESSED OR IMPLIED, AS TO THE SUITABILITY OF A PRODUCT FOR ANY INTENDED USE. THE CUSTOMER SHALL BEAR THE SOLE RESPONSIBILITY OF DETERMINING THE SUITABILITY OF ANY VTE PRODUCT FOR ITS END USE.



LT#	REVISIONS	DATE	INT.
1	UPDATED MATERIAL INFORMATION FOR POLYPROPYLENE	8-15-22	RAS

ALL DIMENSIONS GIVEN AS: in [mm]
 MOLDED PARTS: ±.030" [±0.8mm]
 HARDWARE ITEMS: ±.010" [±0.25mm]

MATERIAL PART NO: 1209720314
 MATERIAL: POLYPROPYLENE
 VENDOR PART NO: MAFILL CR HT 6644 H
 ASH FILLER CONTENT: 40%
 TENSILE STRENGTH, YIELD: 33 MPa
 DENSITY (G/CM³): 1.25
 NOTCHED CHARPY IMPACT, 23C: 2.5 KJ/M²
 MFI (230DEG C/2.1KG): 13 g/10 min
 FLAME CLASS UL: HB



VTE Incorporated
 5437 Robinson Road, P.O. Box 790
 Pellston, Michigan 49769
 Telephone: 1-800-527-9256, 231-539-8000
 FAX: 231-539-0914

REF:	DATE:	DRN BY:	BRH	WEIGHT:
CUSTOMER DIMS	05-20-08	CHK'D BY:	BRH	032 LBS [14.5 g]
TITLE: COVER, TAB TYPE BUSBAR				
MATERIAL:	POLYPROPYLENE	PART NO:	335N9P14	
COLOR:	BLACK	DRG CLASS	REV A	

DD NOT SCALE