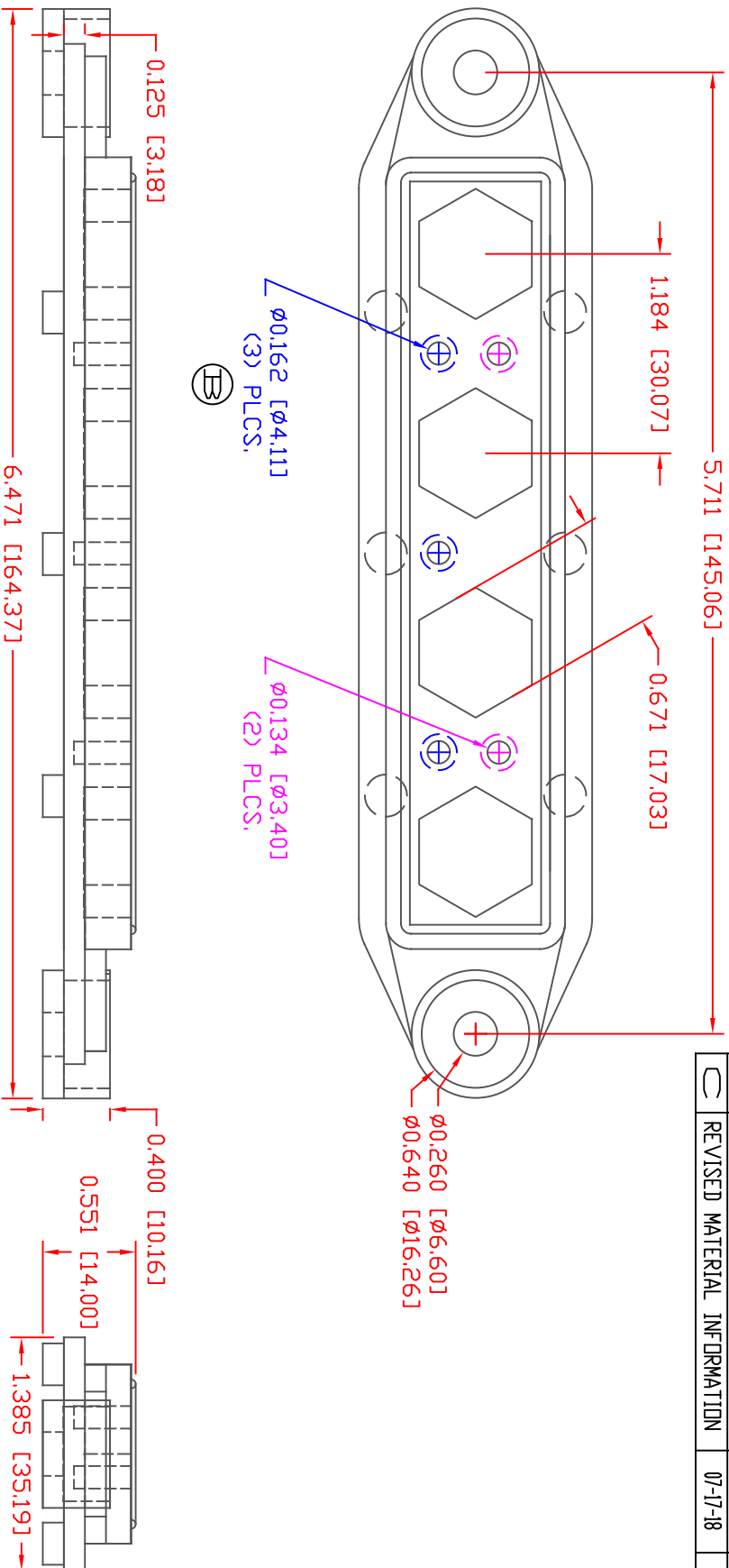


THE INFORMATION CONTAINED IN THIS DRAWING IS THE SOLE PROPERTY OF VTE INCORPORATED. ANY REPRODUCTION IN PART OR WHOLE WITHOUT THE WRITTEN PERMISSION OF VTE INCORPORATED IS PROHIBITED. VTE MAKES NO WARRANTY, EXPRESSED OR IMPLIED, AS TO THE SUITABILITY OF A PRODUCT FOR ANY INTENDED USE. THE CUSTOMER SHALL BEAR THE SOLE RESPONSIBILITY OF DETERMINING THE SUITABILITY OF ANY VTE PRODUCT FOR ITS END USE.




LTR	REVISIONS	DATE	INT.
A	REVISED DRAWING TO AGREE WITH PARTS AS MANUFACTURED	11-06-12	BRH
B	REVISED DIMENSION FROM .134 [3.40]	3-21-18	RAS
C	REVISED MATERIAL INFORMATION	07-17-18	RAS

SCALE FACTOR : NONE
 ALL DIMENSIONS GIVEN AS: In [mm]
 TOLERANCES UNLESS OTHERWISE SPECIFIED :
 MOLDED PARTS: $\pm 0.30"$ [$\pm 0.8mm$]
 HARDWARE ITEMS: $\pm 0.10"$ [$\pm 0.25mm$]

MATERIAL PART NO:
 MATERIAL:
 VENDOR PART NO:
 SPECIFIC GRAVITY:
 MELTING TEMP:
 U.L. RATING:

7111210502
 GLASS FILLED NYLON
 HYLDN N2015 HL NAT
 1.23
 515 F [268 C]
 UL 94 HB

DD NDT SCALE

		VTE Incorporated 5437 Robinson Road, P.O. Box 790 Pellston, Michigan 49769 Telephone: 1-800-527-9256, 231-539-8000 FAX: 231-539-0914	
REF:	DATE:	DRN BY:	BRH
QA DIMS	08-18-10	CHK'D BY:	BRH
TITLE: BASEPLATE, 4 POINT BUS M10		WEIGHT: .071 LBS [32.3 g]	
MATERIAL: GLASS FILLED NYLON		PART NO: 344010N02	
COLOR: RED	DRG CLASS: REV C		