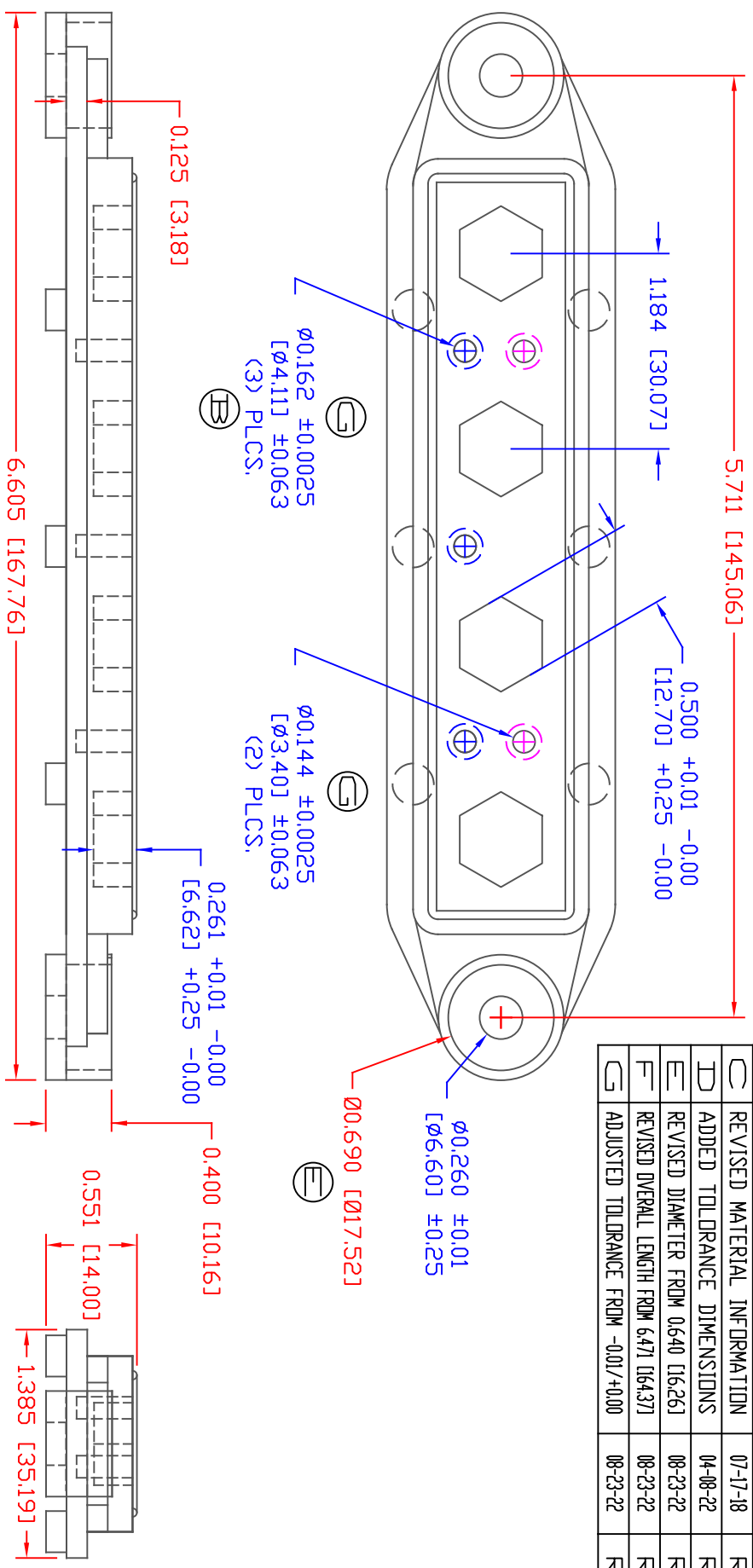


THE INFORMATION CONTAINED IN THIS DRAWING IS THE SOLE PROPERTY OF VTE INCORPORATED. ANY REPRODUCTION IN PART OR WHOLE WITHOUT THE WRITTEN PERMISSION OF VTE INCORPORATED IS PROHIBITED. VTE MAKES NO WARRANTY, EXPRESSED OR IMPLIED, AS TO THE SUITABILITY OF A PRODUCT FOR ANY INTENDED USE. THE CUSTOMER SHALL BEAR THE SOLE RESPONSIBILITY OF DETERMINING THE SUITABILITY OF ANY VTE PRODUCT FOR ITS END USE.



LTR	REVISIONS	DATE	INT.
A	REVISED DRAWING TO AGREE WITH PARTS AS MANUFACTURED	11-06-12	BRH
B	REVISED DIMENSION FROM .134 [3.40]	03-21-18	RAS
C	REVISED MATERIAL INFORMATION	07-17-18	RAS
D	ADDED TOLERANCE DIMENSIONS	04-08-22	RAS
E	REVISED DIAMETER FROM 0.640 [16.26]	08-23-22	RAS
F	REVISED OVERALL LENGTH FROM 6.471 [164.37]	08-23-22	RAS
G	ADJUSTED TOLERANCE FROM -0.01/+0.00	08-23-22	RAS

SCALE FACTOR : NONE
 ALL DIMENSIONS GIVEN AS: In (mm)
 TOLERANCES UNLESS OTHERWISE SPECIFIED :
 MOLDED PARTS: $\pm 0.30^{\circ}$ [$\pm 0.8\text{mm}$]
 HARDWARE ITEMS: $\pm 0.10^{\circ}$ [$\pm 0.25\text{mm}$]

MATERIAL PART NO: 1111210514UL
 MATERIAL: GLASS FILLED NYLON
 VENDOR PART NO: HYLON N2015 HL BK
 SPECIFIC GRAVITY: 1.23
 MELTING TEMP: 515 F [268 C]
 UL RATING: UL 94 HB

VTE Incorporated
 5437 Robinson Road, P.O. Box 790
 Pellston, Michigan 49769
 Telephone: 1-800-527-9256, 231-539-8000
 FAX: 231-539-0914

REF.	DATE	DRN BY:	BRH	WEIGHT:
CUSTOMER DIMS	08-18-10	CHK'D BY:	BRH	071 LBS [32.3 g]
TITLE: BASEPLATE, 4 POINT BUS 5/16"				
MATERIAL: GLASS FILLED NYLON		PART NO: 344312N14		
COLOR: BLACK	DRG CLASS: REV G			

DDO NOT SCALE