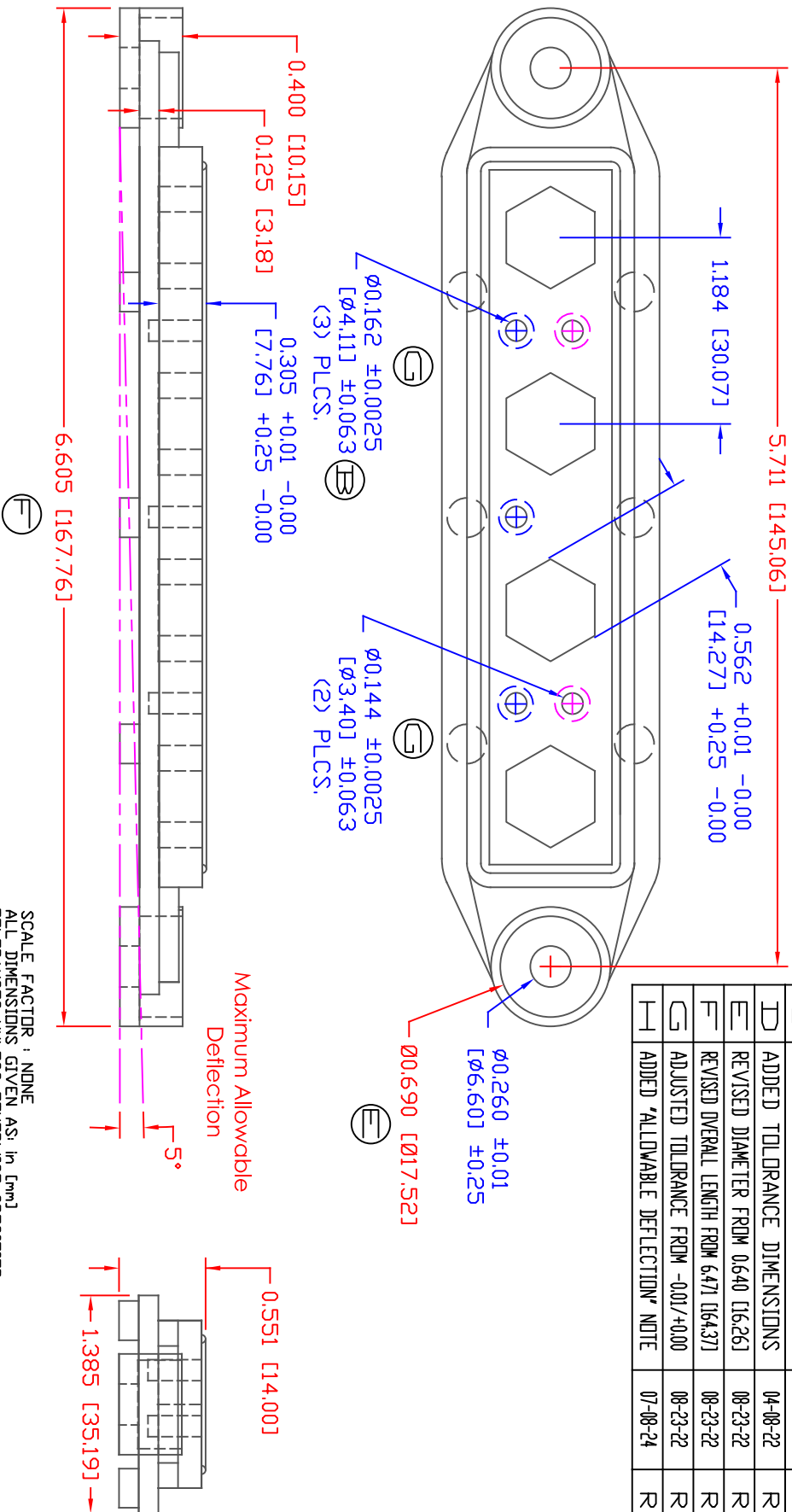


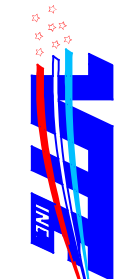
THE INFORMATION CONTAINED IN THIS DRAWING IS THE SOLE PROPERTY OF VTE INCORPORATED. ANY REPRODUCTION IN PART OR WHOLE WITHOUT THE WRITTEN PERMISSION OF VTE INCORPORATED IS PROHIBITED. VTE MAKES NO WARRANTY, EXPRESSED OR IMPLIED, AS TO THE SUITABILITY OF A PRODUCT FOR ANY INTENDED USE. THE CUSTOMER SHALL BEAR THE SOLE RESPONSIBILITY OF DETERMINING THE SUITABILITY OF ANY VTE PRODUCT FOR ITS END USE.



MATERIAL PART NO: 711210502
MATERIAL: GLASS FILLED NYLON
VENDOR PART NO: HYLDON N2015 HL NAT
SPECIFIC GRAVITY: 1.23
MELTING TEMP: 515 F [268 C]
UL RATING: 94 HB

LTR	REVISIONS	DATE	INT.
Δ	REVISED DRAWING TO AGREE WITH PARTS AS MANUFACTURED	11-06-12	BRH
Δ	REVISED DIMENSION FROM .134 [3.40]	03-21-18	RAS
Δ	REVISED MATERIAL INFORMATION	7-17-18	RAS
Δ	ADDED TOLERANCE DIMENSIONS	04-08-22	RAS
Δ	REVISED DIAMETER FROM 0.640 [16.26]	08-23-22	RAS
Δ	REVISED OVERALL LENGTH FROM 6.471 [164.37]	08-23-22	RAS
Δ	ADJUSTED TOLERANCE FROM -.001/+0.00	08-23-22	RAS
Δ	ADDED 'ALLOWABLE DEFLECTION' NOTE	07-08-24	RAS

SCALE FACTOR : NONE
ALL DIMENSIONS GIVEN AS: in [mm]
TOLERANCES UNLESS OTHERWISE SPECIFIED :
MOLDED PARTS: ±.030" [±0.8mm]
HARDWARE ITEMS: ±.010" [±0.25mm]



VTE Incorporated
5437 Robinson Road, P.O. Box 790
Pellston, Michigan 49769
Telephone: 1-800-527-9256, 231-539-8000
FAX: 231-539-0914

REF.	DATE	DRN BY:	BRH	WEIGHT:
CUSTOMER DIMS	08-18-10	CHK'D BY:	BRH	.071 LBS [32.3 g]
TITLE:	BASEPLATE, 4 POINT BUS 3/8"			
MATERIAL:	GLASS FILLED NYLON		PART NO:	
COLOR:	RED	DRG CLASS	REV H	344375N02

DO NOT SCALE