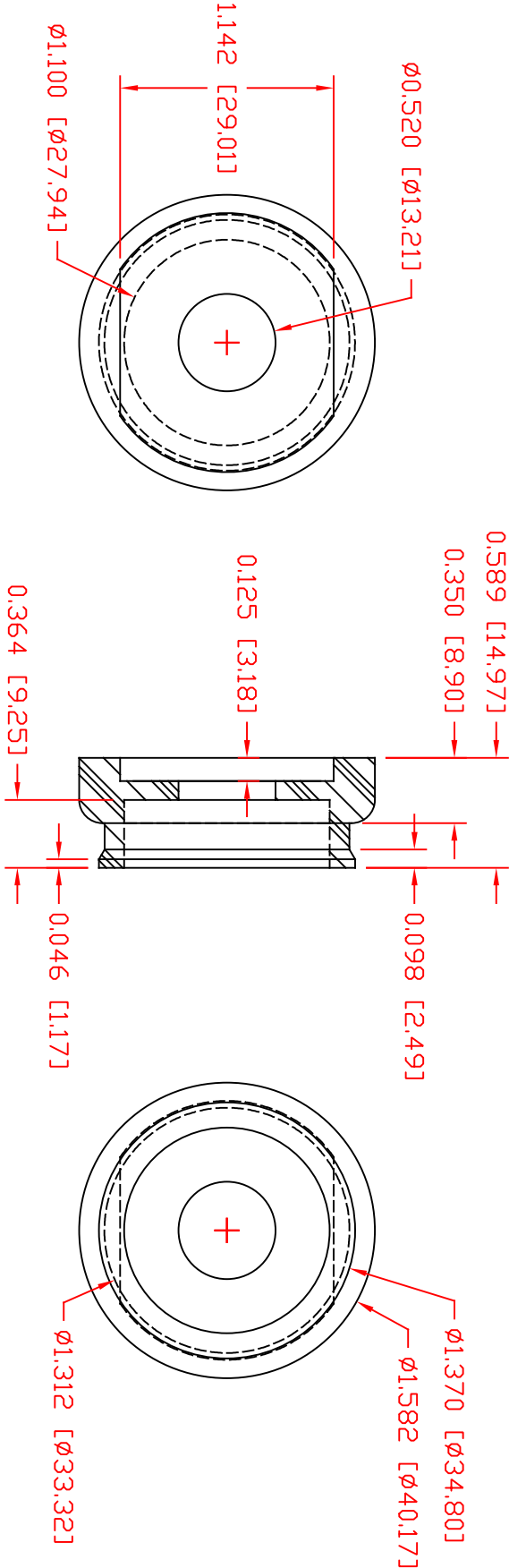


THE INFORMATION CONTAINED IN THIS DRAWING IS THE SOLE PROPERTY OF VTE INCORPORATED. ANY REPRODUCTION IN PART OR WHOLE WITHOUT THE WRITTEN PERMISSION OF VTE INCORPORATED IS PROHIBITED.VTE MAKES NO WARRANTY, EXPRESSED OR IMPLIED, AS TO THE SUITABILITY OF A PRODUCT FOR ANY INTENDED USE. THE CUSTOMER SHALL BEAR THE SOLE RESPONSIBILITY OF DETERMINING THE SUITABILITY OF ANY VTE PRODUCT FOR ITS END USE.

LTR.	REVISIONS	DATE	INT.
△	REVISED MATERIAL INFORMATION	7-17-18	RAS
⊞	REMOVED *MAKE FROM P/N 3450* NOTE	5-31-24	RAS



SCALE FACTOR : NONE  
ALL DIMENSIONS GIVEN AS: in [mm]  
TOLERANCES UNLESS OTHERWISE SPECIFIED :  
MOLDED PARTS:  $\pm 0.30^\circ$  [ $\pm 0.8\text{mm}$ ]  
HARDWARE ITEMS:  $\pm 0.10^\circ$  [ $\pm 0.25\text{mm}$ ]

MATERIAL PART NO:  
MATERIAL:  
VENDOR PART NO:  
SPECIFIC GRAVITY:  
MELTING TEMP:  
UL RATING:

111210514UL  
GLASS FILLED NYLON  
HYLON N2015 HL BK  
1.23  
515 F [268 C]  
UL 94 HB



VTE Incorporated  
5437 Robinson Road, P.O. Box 790  
Pellston, Michigan 49769  
Telephone: 1-800-527-9256, 231-539-8000  
FAX: 231-539-0914

REF:	DATE:	DRN BY:	BRH	WEIGHT:
CUSTOMER DIMS	1-08-03	CHK'D BY:	BRH	
TITLE: OUTER PANEL BUSHING FOR 1/2" STUD (WEATHERPROOF)				
MATERIAL: GLASS FILLED NYLON				PART NO.
COLOR: BLACK	DRG CLASS	REV A	3451N14	