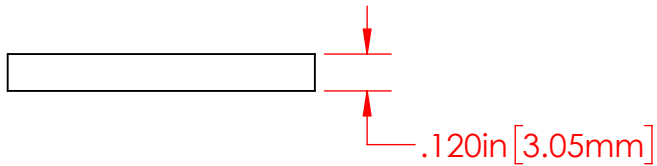
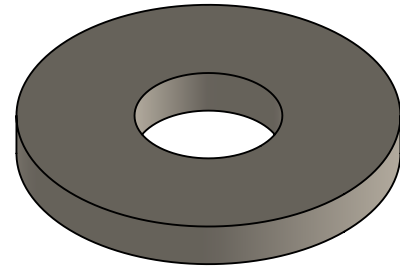
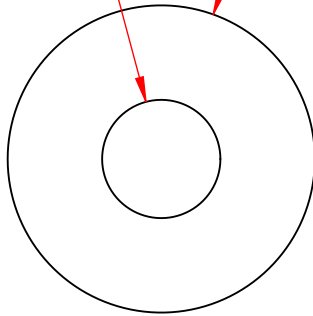


REVISIONS			
REV.	DESCRIPTION	DATE	APPROVED
C	Redrawn in Solidworks	12/23/2022	RAS

$\phi .385\text{in} [9.78\text{mm}]$
 $\phi 1.000\text{in} [25.40\text{mm}]$



P/N 3639-000
 18-8 Stainless Steel
 Flat Washer

Part Material :
 18-8 Stainless Steel

ALL DIMENSIONS GIVEN AS : INCH [METRIC]
 TOLERANCES UNLESS OTHERWISE SPECIFIED :
 HARDWARE PRODUCTS : $\pm .010"$ / $\pm 0.25\text{mm}$

PRINTED COPIES ARE NOT CONTROLLED
PROPRIETARY AND CONFIDENTIAL
 THE INFORMATION CONTAINED IN THIS
 DRAWING IS THE SOLE PROPERTY OF
 VTE INCORPORATED. ANY REPRODUCTION
 IN PART OR AS A WHOLE WITHOUT THE WRITTEN
 PERMISSION OF VTE INCORPORATED PROHIBITED.



VTE INCORPORATED

5437 Robinson Road, P.O. Box 790
 Pellston, Michigan 49769 USA
 Telephone : 1-800-527-9256, 231-539-8000
 Fax : 231-539-0914, Efax : 231-344-5914

REV **C**
 SIZE **A**

DRAWN BY:	RAS	DATE	12-23-22
CHECKED BY:			
DO NOT SCALE DRAWING			

TITLE: 3/8" Stainless Steel Flat Washer

DWG. NO. **3639-000**