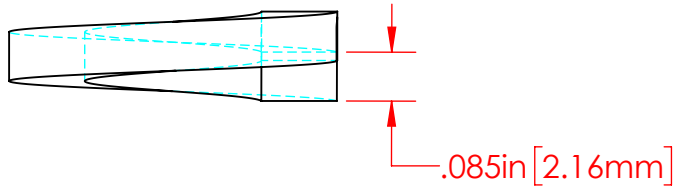
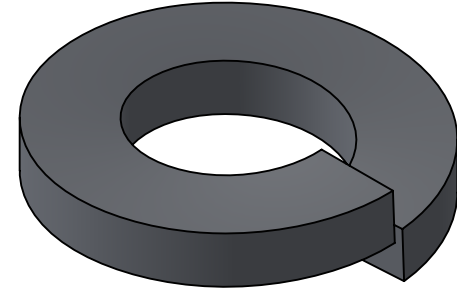
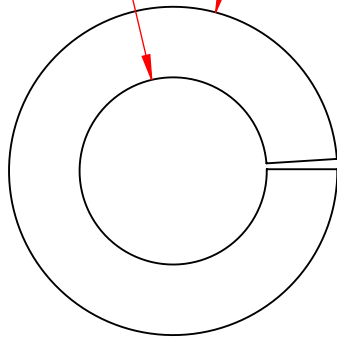


REVISIONS			
REV.	DESCRIPTION	DATE	APPROVED
B	Redrawn in Solidworks	12-23-2022	RAS

$\phi .325\text{in} [8.26\text{mm}]$ 
 $\phi .570\text{in} [14.48\text{mm}]$



P/N 3642-000  
 18-8 Stainless Steel  
 Lock Washer

Part Material :  
 18-8 Stainless Steel

ALL DIMENSIONS GIVEN AS : INCH [METRIC]  
 TOLERANCES UNLESS OTHERWISE SPECIFIED :  
 HARDWARE PRODUCTS :  $\pm .010"$  /  $\pm 0.25\text{mm}$

PRINTED COPIES ARE NOT CONTROLLED

**PROPRIETARY AND CONFIDENTIAL**

THE INFORMATION CONTAINED IN THIS  
 DRAWING IS THE SOLE PROPERTY OF  
 VTE INCORPORATED. ANY REPRODUCTION  
 IN PART OR AS A WHOLE WITHOUT THE WRITTEN  
 PERMISSION OF VTE INCORPORATED PROHIBITED.



**VTE INCORPORATED**

5437 Robinson Road, P.O. Box 790  
 Pellston, Michigan 49769 USA  
 Telephone : 1-800-527-9256, 231-539-8000  
 Fax : 231-539-0914, Efax : 231-344-5914

REV **B**

SIZE **A**

NAME  
 DRAWN BY: RAS

DATE  
 12-23-22

CHECKED BY:  
 DO NOT SCALE DRAWING

TITLE:  
 5/16" Stainless Steel Lock Washer

DWG. NO.  
**3642-000**