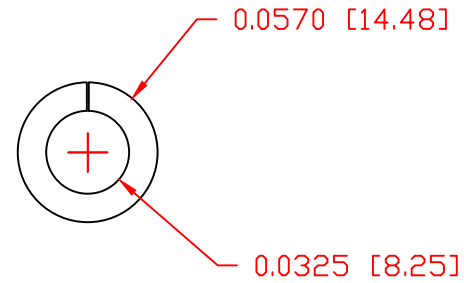
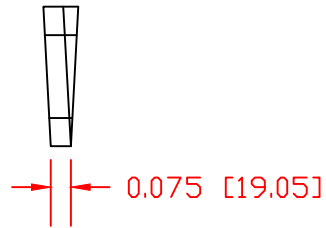


THE INFORMATION CONTAINED IN THIS DRAWING IS THE SOLE PROPERTY OF VTE INCORPORATED. ANY REPRODUCTION IN PART OR WHOLE WITHOUT THE WRITTEN PERMISSION OF VTE INCORPORATED IS PROHIBITED. VTE MAKES NO WARRANTY, EXPRESSED OR IMPLIED, AS TO THE SUITABILITY OF A PRODUCT FOR ANY INTENDED USE. THE CUSTOMER SHALL BEAR THE SOLE RESPONSIBILITY OF DETERMINING THE SUITABILITY OF ANY VTE PRODUCT FOR ITS END USE.

LTR.	REVISIONS	DATE	INT.
△	PART NUMBER WAS 3462A	03-07-06	RAS



P/N 3642-001  
BRONZE SPRING WASHER

SCALE FACTOR : NONE  
ALL DIMENSIONS GIVEN AS: in [mm]  
FASTENERS MEET IFI STANDARDS  
TOLERANCES UNLESS OTHERWISE SPECIFIED :  
HARDWARE ITEMS: ±.010" [±0.25mm]



VTE Incorporated  
5437 Robinson Road, P.O. Box 790  
Pellston, Michigan 49769  
Telephone: 1-800-527-9256, 231-539-8000  
FAX: 231-539-0914

REF:	DATE:	DRN BY: BRH	WEIGHT:
	01-23-03	CHK'D BY: BRH	
TITLE: 5/16" BRONZE LOCK WASHER			
MATERIAL: BRONZE		PART NO.	
COLOR:	DRG CLASS REV A	3642-001	