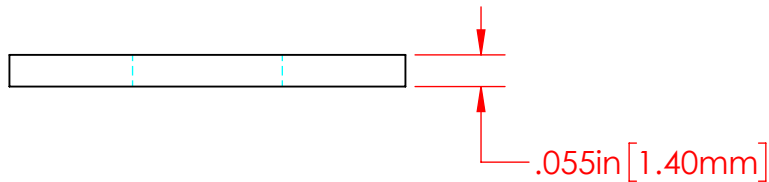
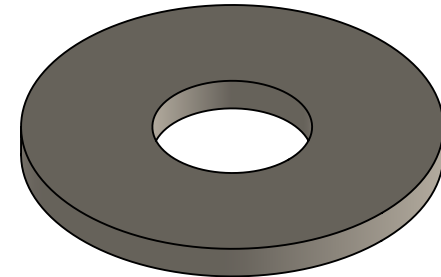
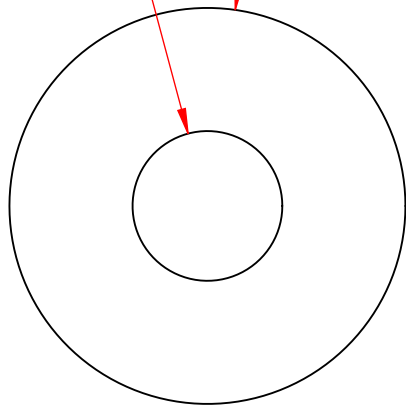


REVISIONS			
REV.	DESCRIPTION	DATE	APPROVED
B	Redrawn in Solidworks	12-23-2022	RAS

$\phi .260\text{in} [6.60\text{mm}]$ $\phi .688\text{in} [17.46\text{mm}]$



P/N 3644-003
360 Brass Alloy
Flat Washer
Nickel Plated

Part Material :
Nickel Plated 360 Brass

ALL DIMENSIONS GIVEN AS : INCH [METRIC]
TOLERANCES UNLESS OTHERWISE SPECIFIED :
HARDWARE PRODUCTS : $\pm .010"$ / $\pm 0.25\text{mm}$

PRINTED COPIES ARE NOT CONTROLLED

PROPRIETARY AND CONFIDENTIAL

THE INFORMATION CONTAINED IN THIS
DRAWING IS THE SOLE PROPERTY OF
VTE INCORPORATED. ANY REPRODUCTION
IN PART OR AS A WHOLE WITHOUT THE WRITTEN
PERMISSION OF VTE INCORPORATED PROHIBITED.



VTE INCORPORATED

5437 Robinson Road, P.O. Box 790
Pellston, Michigan 49769 USA
Telephone : 1-800-527-9256, 231-539-8000
Fax : 231-539-0914, EFax : 231-344-5914

REV **B**

SIZE **A**

DRAWN BY: RAS 12-23-22

CHECKED BY:

DO NOT SCALE DRAWING

TITLE: 1/4" Nickel Plated Brass Flat Washer

DWG. NO. **3644-003**