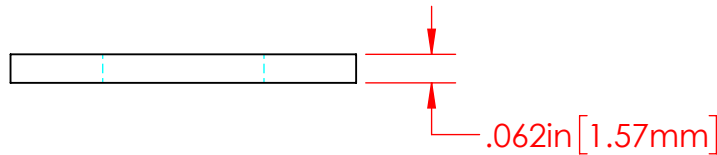
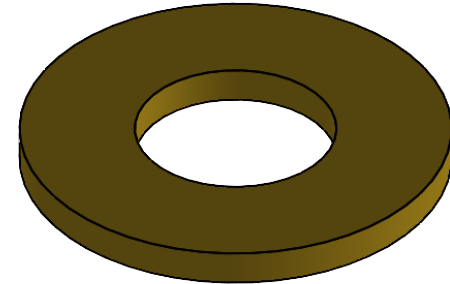
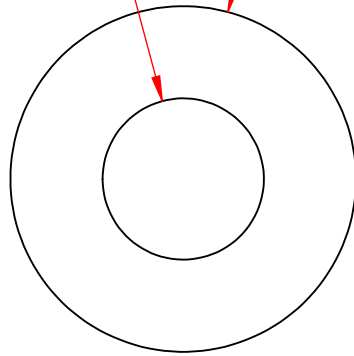


REVISIONS			
REV.	DESCRIPTION	DATE	APPROVED
A	Redrawn in Solidworks	12/23/2022	RAS
B	ϕ .750in [19.05mm] was ϕ .870in [22.10mm]	8/20/2024	RAS

B

ϕ .350in [8.89mm] ϕ .750in [19.05mm]



P/N 3645-C
360 Brass Alloy
Flat Washer

Part Material :
360 Brass Alloy

ALL DIMENSIONS GIVEN AS : INCH [METRIC]
TOLERANCES UNLESS OTHERWISE SPECIFIED :
HARDWARE PRODUCTS : \pm .010" / \pm 0.25mm

PRINTED COPIES ARE NOT CONTROLLED
PROPRIETARY AND CONFIDENTIAL
THE INFORMATION CONTAINED IN THIS
DRAWING IS THE SOLE PROPERTY OF
VTE INCORPORATED. ANY REPRODUCTION
IN PART OR AS A WHOLE WITHOUT THE WRITTEN
PERMISSION OF VTE INCORPORATED PROHIBITED.



VTE INCORPORATED

5437 Robinson Road, P.O. Box 790
Pellston, Michigan 49769 USA
Telephone : 1-800-527-9256, 231-539-8000
Fax : 231-539-0914, Efax : 231-344-5914

REV	B	NAME	DATE
SIZE	A	DRAWN BY:	RAS 12-23-22
		CHECKED BY:	
DO NOT SCALE DRAWING			

TITLE:	5/16" Brass Alloy Flat Washer
DWG. NO.	3645-C