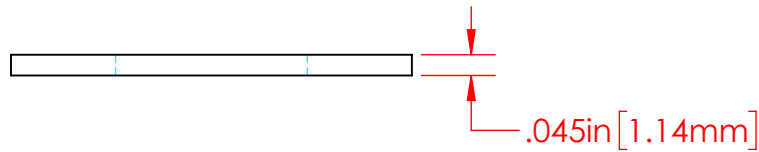
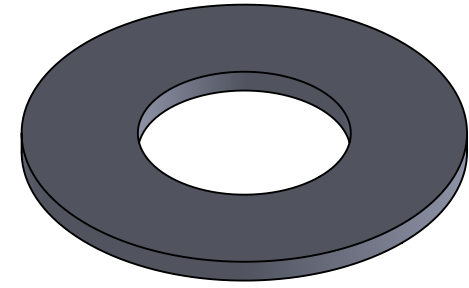
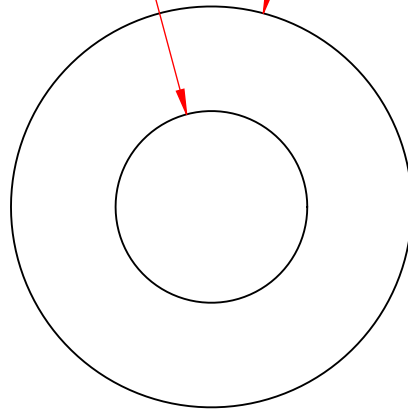


REVISIONS			
REV.	DESCRIPTION	DATE	APPROVED
B	Redrawn in Solidworks	12-23-2022	RAS

$\phi .416\text{in} [10.57\text{mm}]$ $\phi .870\text{in} [22.10\text{mm}]$



P/N 3646-000
18-8 Stainless Steel
Flat Washer

Part Material :
18-8 Stainless Steel

ALL DIMENSIONS GIVEN AS : INCH [METRIC]
TOLERANCES UNLESS OTHERWISE SPECIFIED :
HARDWARE PRODUCTS : $\pm .010'' / \pm 0.25\text{mm}$

PRINTED COPIES ARE NOT CONTROLLED
PROPRIETARY AND CONFIDENTIAL
THE INFORMATION CONTAINED IN THIS
DRAWING IS THE SOLE PROPERTY OF
VTE INCORPORATED. ANY REPRODUCTION
IN PART OR AS A WHOLE WITHOUT THE WRITTEN
PERMISSION OF VTE INCORPORATED PROHIBITED.



VTE INCORPORATED

5437 Robinson Road, P.O. Box 790
Pellston, Michigan 49769 USA
Telephone : 1-800-527-9256, 231-539-8000
Fax : 231-539-0914, Efax : 231-344-5914

REV	B	NAME	DATE
		DRAWN BY:	RAS 12-23-22
SIZE	A	CHECKED BY:	
DO NOT SCALE DRAWING			

TITLE: 3/8" Stainless Steel Flat Washer

DWG. NO. **3646-000**