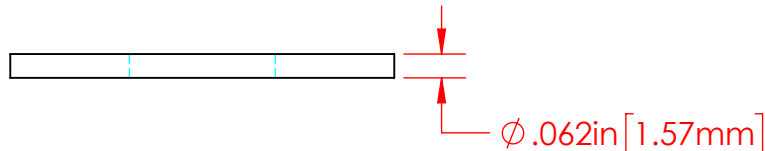
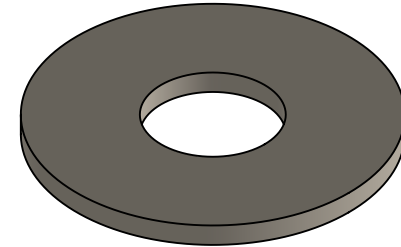
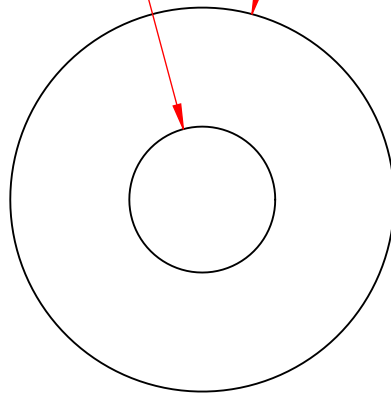


REVISIONS			
REV.	DESCRIPTION	DATE	APPROVED
A	Redrawn in Solidworks	12-23-2023	RAS

$\phi .380\text{in} [9.65\text{mm}]$ $\phi 1.000\text{in} [25.40\text{mm}]$



P/N 3648-004
Nickel Plated 110 Copper
Flat Washer
"Alternate Construction"
Made from P/N 3648-000

Part Material :
Nickel Plated Copper

ALL DIMENSIONS GIVEN AS : INCH [METRIC]
TOLERANCES UNLESS OTHERWISE SPECIFIED :
HARDWARE PRODUCTS : $\pm .010"$ / $\pm 0.25\text{mm}$

PRINTED COPIES ARE NOT CONTROLLED

PROPRIETARY AND CONFIDENTIAL

THE INFORMATION CONTAINED IN THIS
DRAWING IS THE SOLE PROPERTY OF
VTE INCORPORATED. ANY REPRODUCTION
IN PART OR AS A WHOLE WITHOUT THE WRITTEN
PERMISSION OF VTE INCORPORATED PROHIBITED.



VTE INCORPORATED

5437 Robinson Road, P.O. Box 790
Pellston, Michigan 49769 USA
Telephone : 1-800-527-9256, 231-539-8000
Fax : 231-539-0914, EFax : 231-344-5914

REV **A**

DRAWN BY: RAS 12-23-22

SIZE **A**

CHECKED BY:
DO NOT SCALE DRAWING

TITLE: 3/8" Nickel Plated Flat Washer

DWG. NO. **3648-004**