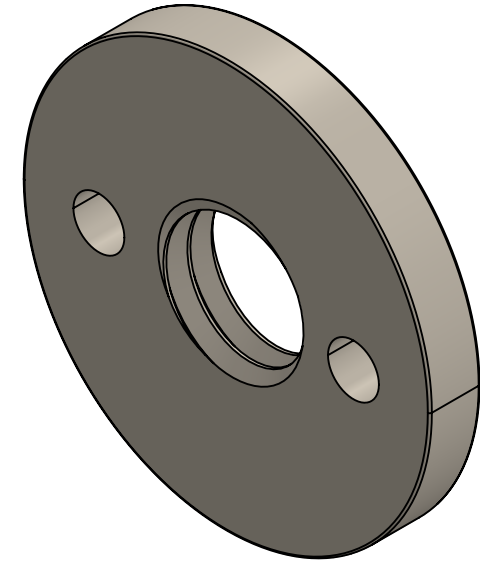
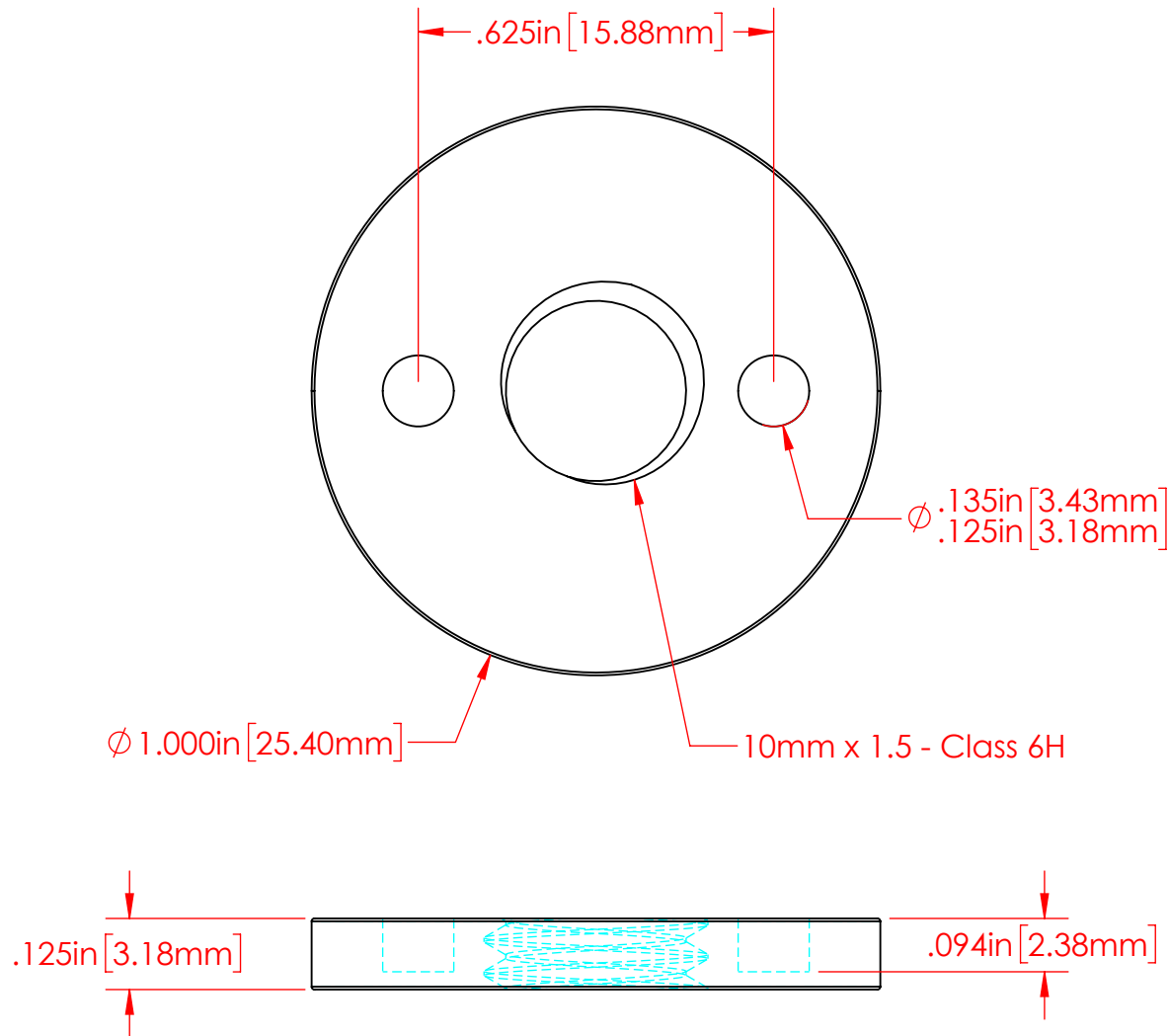


REVISIONS			
REV.	DESCRIPTION	DATE	APPROVED
A	Redrawn in Solidworks	12-23-2022	RAS



P/N 3648-009
Nickel Plated
110 Copper Alloy
Contact Washer

Part Material :
Nickel Plated Copper

ALL DIMENSIONS GIVEN AS : INCH [METRIC]
TOLERANCES UNLESS OTHERWISE SPECIFIED :
HARDWARE PRODUCTS : $\pm .010"$ / $\pm 0.25\text{mm}$

PRINTED COPIES ARE NOT CONTROLLED
PROPRIETARY AND CONFIDENTIAL
THE INFORMATION CONTAINED IN THIS
DRAWING IS THE SOLE PROPERTY OF
VTE INCORPORATED. ANY REPRODUCTION
IN PART OR AS A WHOLE WITHOUT THE WRITTEN
PERMISSION OF VTE INCORPORATED PROHIBITED.



VTE INCORPORATED

5437 Robinson Road, P.O. Box 790
Pellston, Michigan 49769 USA
Telephone : 1-800-527-9256, 231-539-8000
Fax : 231-539-0914, EFax : 231-344-5914

REV	A	NAME	DATE
DRAWN BY:	RAS	12-23-22	
SIZE	A	CHECKED BY:	
DO NOT SCALE DRAWING			

TITLE: M10 Threaded Contact Washer

DWG. NO. **3648-009**