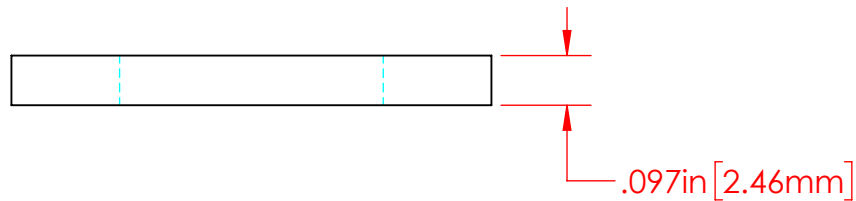
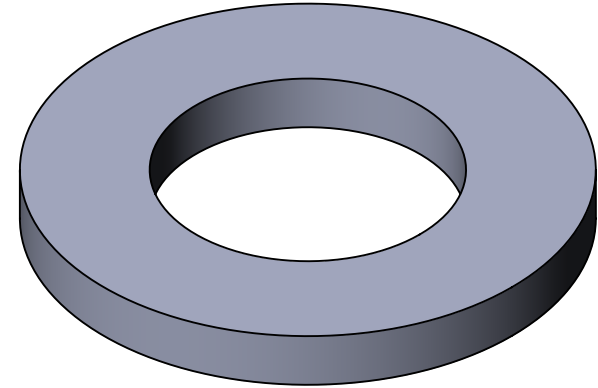
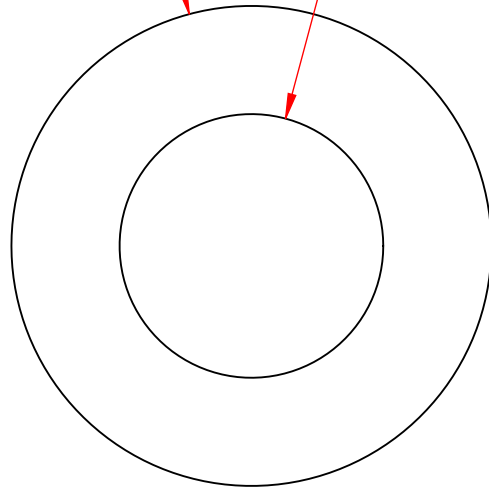


| REVISIONS | | | |
|-----------|-----------------------|------------|----------|
| REV. | DESCRIPTION | DATE | APPROVED |
| B | Redrawn in Solidworks | 12-23-2022 | RAS |

$\phi .938\text{in} [23.81\text{mm}]$ $\phi .515\text{in} [13.08\text{mm}]$



P/N 3649-000
18-8 Stainless Steel
1/2" Flat Washer

Part Material :
18-8 Stainless Steel

ALL DIMENSIONS GIVEN AS : INCH [METRIC]
TOLERANCES UNLESS OTHERWISE SPECIFIED :
HARDWARE PRODUCTS : $\pm .010"$ / $\pm 0.25\text{mm}$

PRINTED COPIES ARE NOT CONTROLLED
PROPRIETARY AND CONFIDENTIAL
THE INFORMATION CONTAINED IN THIS
DRAWING IS THE SOLE PROPERTY OF
VTE INCORPORATED. ANY REPRODUCTION
IN PART OR AS A WHOLE WITHOUT THE WRITTEN
PERMISSION OF VTE INCORPORATED PROHIBITED.



VTE INCORPORATED

5437 Robinson Road, P.O. Box 790
Pellston, Michigan 49769 USA
Telephone : 1-800-527-9256, 231-539-8000
Fax : 231-539-0914, Efax : 231-344-5914

| | | | |
|------|----------|----------------------|--------------|
| REV | B | NAME | DATE |
| | | DRAWN BY: | RAS 12-23-22 |
| SIZE | A | CHECKED BY: | |
| | | DO NOT SCALE DRAWING | |

TITLE: 1/2" Stainless Steel flat Washer

DWG. NO. **3649-000**