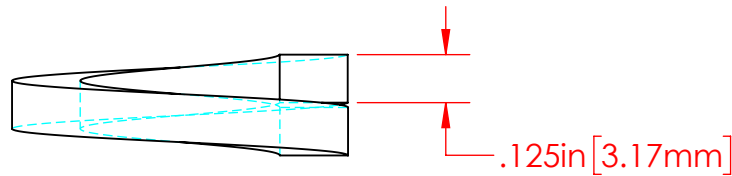
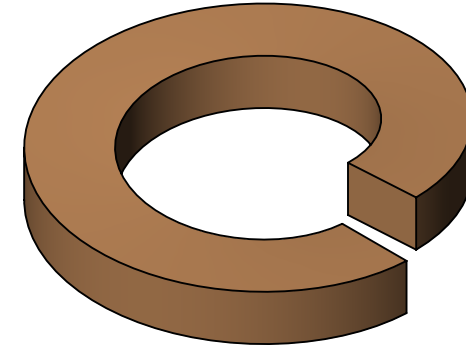
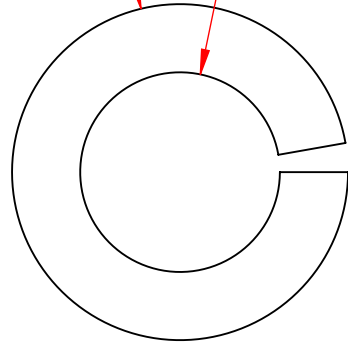



REVISIONS			
REV.	DESCRIPTION	DATE	APPROVED
A	Redrawn in Solidworks	12-23-2022	RAS

$\phi .875\text{in}$ [22.23mm] $\phi .520\text{in}$ [13.21mm]



P/N 3653-000
Bronze Alloy
1/2" Lock Washer

Part Material : Bronze Alloy				VTE INCORPORATED 5437 Robinson Road, P.O. Box 790 Pellston, Michigan 49769 USA Telephone : 1-800-527-9256, 231-539-8000 Fax : 231-539-0914, Efax : 231-344-5914	
<small>ALL DIMENSIONS GIVEN AS : INCH [METRIC] TOLERANCES UNLESS OTHERWISE SPECIFIED : HARDWARE PRODUCTS : $\pm .010"$ / $\pm 0.25\text{mm}$</small>					
<small>PRINTED COPIES ARE NOT CONTROLLED PROPRIETARY AND CONFIDENTIAL THE INFORMATION CONTAINED IN THIS DRAWING IS THE SOLE PROPERTY OF VTE INCORPORATED. ANY REPRODUCTION IN PART OR AS A WHOLE WITHOUT THE WRITTEN PERMISSION OF VTE INCORPORATED PROHIBITED.</small>	REV A	NAME RAS	DATE 12-23-22	TITLE: 1/2" Bronze Lock Washer	
	SIZE A	DRAWN BY: RAS	CHECKED BY:	DWG. NO. 3653-000	
	DO NOT SCALE DRAWING				