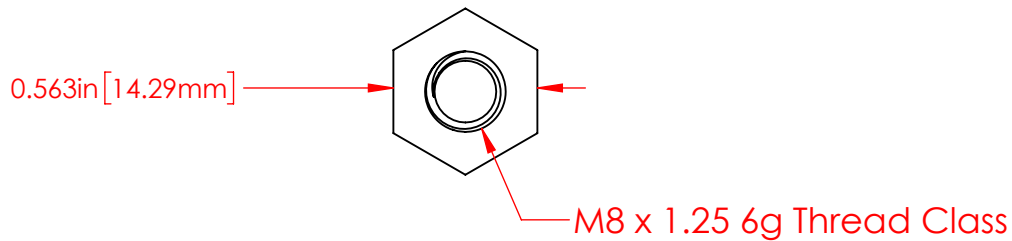
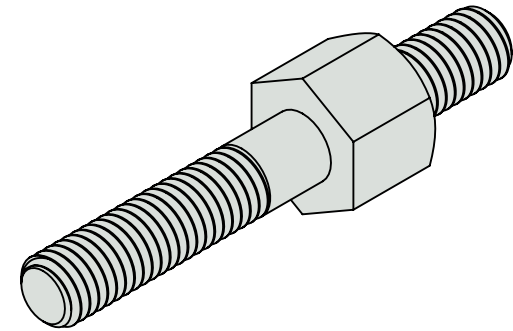
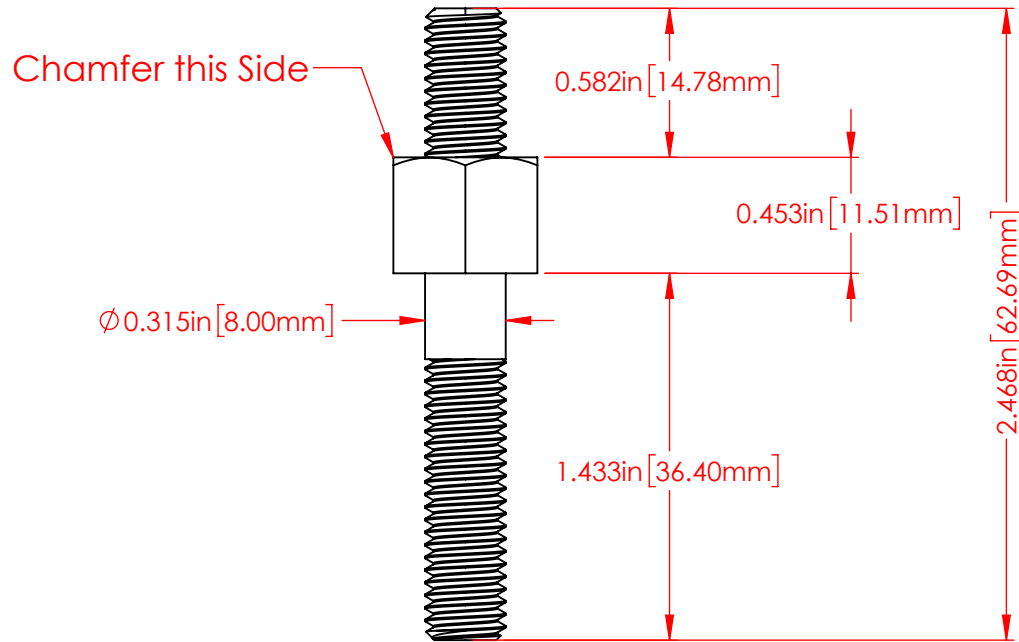


REVISIONS			
REV.	DESCRIPTION	DATE	APPROVED



P/N 3739-006  
Nickel Plated 360 Brass Alloy  
Double Ended Stud  
M8 X 1.25 Threaded Both ends

Part Material :  
Nickel Plated 360 Brass

TOLERANCES UNLESS OTHERWISE SPECIFIED :  
MOLDED PRODUCTS ONLY :  $\pm 0.030"$  /  $\pm 0.8\text{mm}$   
HARDWARE ITEMS :  $\pm 0.010"$  /  $\pm 0.25\text{mm}$

PRINTED COPIES ARE NOT CONTROLLED

**PROPRIETARY AND CONFIDENTIAL**

THE INFORMATION CONTAINED IN THIS  
DRAWING IS THE SOLE PROPERTY OF  
VTE INCORPORATED. ANY REPRODUCTION  
IN PART OR AS A WHOLE WITHOUT THE WRITTEN  
PERMISSION OF VTE INCORPORATED PROHIBITED.



**VTE INCORPORATED**

5437 Robinson Road, P.O. Box 790  
Pellston, Michigan 49769 USA  
Telephone : 1-800-527-9256, 231-539-8000  
Fax : 231-539-0914, Efax : 231-344-5914

REV		NAME	DATE
	DRAWN BY:	RAS	11-28-22
SIZE	CHECKED BY:		
<b>A</b>	DO NOT SCALE DRAWING		

TITLE: Double Ended Threaded Stud

DWG. NO. **3739-006**