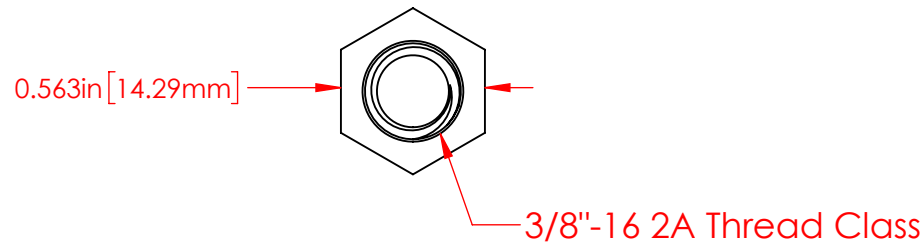
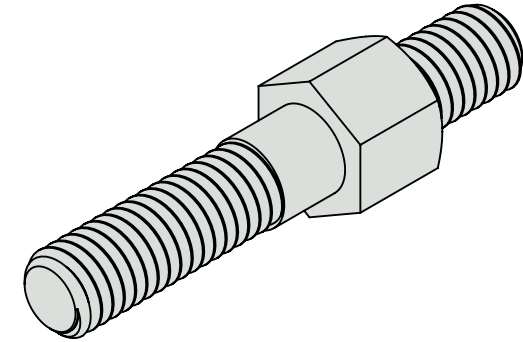
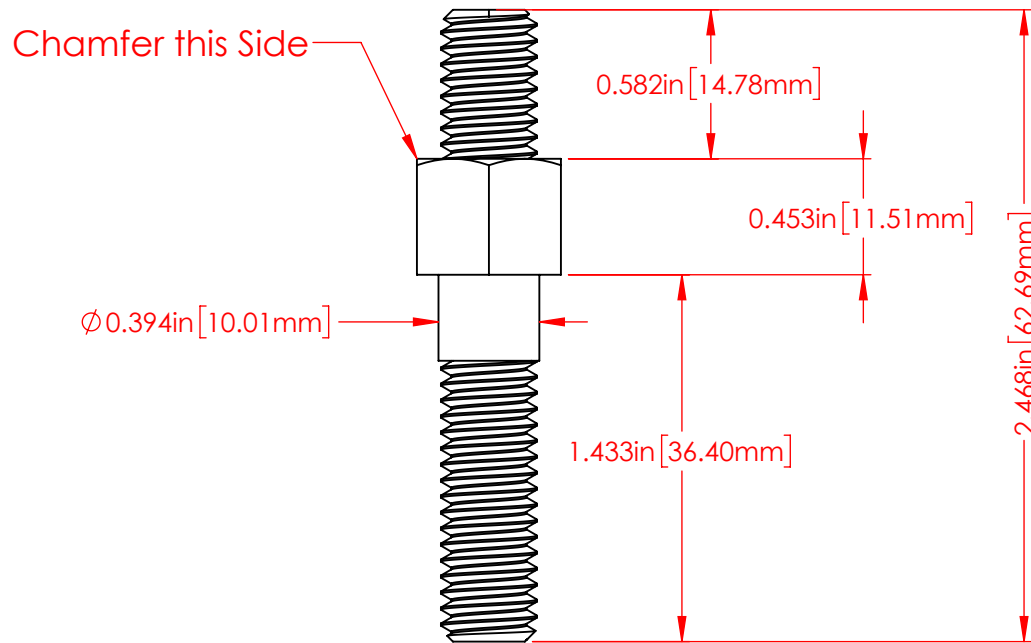


REVISIONS			
REV.	DESCRIPTION	DATE	APPROVED



P/N 3739-007
Nickel Plated 360 Brass Alloy
Double Ended Stud
3/8"-16 Threaded Both ends

Part Material :
Nickel Plated 360 Brass

TOLERANCES UNLESS OTHERWISE SPECIFIED :
MOLDED PRODUCTS ONLY : $\pm 0.030"$ / $\pm 0.8\text{mm}$
HARDWARE ITEMS : $\pm 0.010"$ / $\pm 0.25\text{mm}$

PRINTED COPIES ARE NOT CONTROLLED

PROPRIETARY AND CONFIDENTIAL

THE INFORMATION CONTAINED IN THIS
DRAWING IS THE SOLE PROPERTY OF
VTE INCORPORATED. ANY REPRODUCTION
IN PART OR AS A WHOLE WITHOUT THE WRITTEN
PERMISSION OF VTE INCORPORATED PROHIBITED.



VTE INCORPORATED

5437 Robinson Road, P.O. Box 790
Pellston, Michigan 49769 USA
Telephone : 1-800-527-9256, 231-539-8000
Fax : 231-539-0914, EFax : 231-344-5914

REV	NAME	DATE
DRAWN BY:	RAS	11-28-22
SIZE	CHECKED BY:	DATE
A	PJK	11-28-22
DO NOT SCALE DRAWING		

TITLE:	Double Ended Threaded Stud
DWG. NO.	3739-007