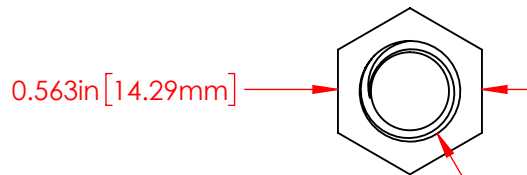
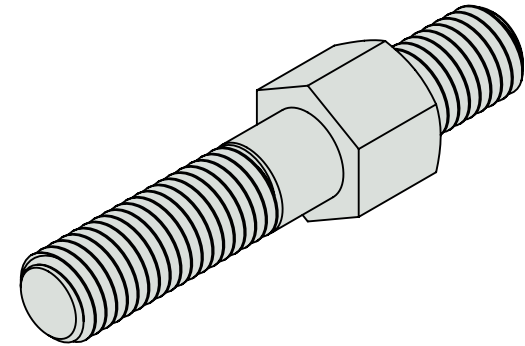
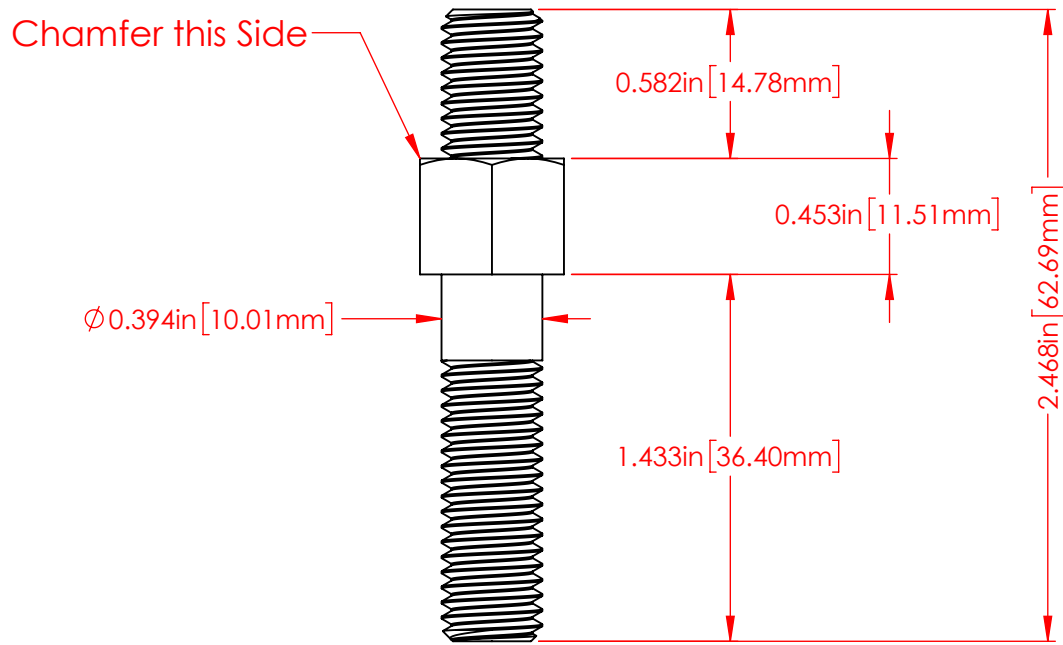


REVISIONS			
REV.	DESCRIPTION	DATE	APPROVED



M10 X 1.5 6g Thread Class

P/N 3739-008
 Nickel Plated 360 Brass Alloy
 Double Ended Stud
 M10 X 1.5 Threaded Both ends

Part Material :
 Nickel Plated 360 Brass

TOLERANCES UNLESS OTHERWISE SPECIFIED :
 MOLDED PRODUCTS ONLY : ±.030" / ±0.8mm
 HARDWARE ITEMS : ±.010" / ±0.25mm

PRINTED COPIES ARE NOT CONTROLLED

PROPRIETARY AND CONFIDENTIAL

THE INFORMATION CONTAINED IN THIS
 DRAWING IS THE SOLE PROPERTY OF
 VTE INCORPORATED. ANY REPRODUCTION
 IN PART OR AS A WHOLE WITHOUT THE WRITTEN
 PERMISSION OF VTE INCORPORATED PROHIBITED.



VTE INCORPORATED

5437 Robinson Road, P.O. Box 790
 Pellston, Michigan 49769 USA
 Telephone : 1-800-527-9256, 231-539-8000
 Fax : 231-539-0914, Efax : 231-344-5914

REV	NAME	DATE
DRAWN BY:	RAS	11-28-22
CHECKED BY:	PJK	11-28-22
SIZE	DO NOT SCALE DRAWING	
A		

TITLE: Double Ended Threaded Stud

DWG. NO. **3739-008**