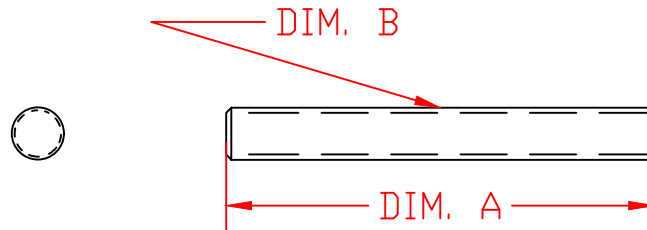


THE INFORMATION CONTAINED IN THIS DRAWING IS THE SOLE PROPERTY OF VTE INCORPORATED. ANY REPRODUCTION IN PART OR WHOLE WITHOUT THE WRITTEN PERMISSION OF VTE INCORPORATED IS PROHIBITED.

LTR.	REVISIONS	DATE	INT.
A	ADDED ITEM 3741-001	06AUG03	BRH
B	ADDED -000 SUFFIX	17MAR06	BRH
C	ADDED -002 AND -003 SUFFIXES	20JUN06	BRH
D	1.625" WAS 1.500", 2 PLCS.	05JUL07	BRH
E	UPDATED MATERIAL FROM 270/360	7/01/16	RAS




	ITEM #	DIM. A	DIM. B	CUSTOMER	WHERE USED
3741	-000	2.500"	3/8"-16	VTE STANDARD PRODUCT	JUMPERSTUD ASSEMBLY
	-001	2.100"	3/8"-16	PORTAGE WIRE	AUXILLIARY POWER CONNECTOR
	-002	1.625"	3/8"-16	VTE STANDARD PRODUCT	DUAL BULKHEAD JUMPSTART POS
	-003	1.625"	5/16"-18	VTE STANDARD PRODUCT	DUAL BULKHEAD JUMPSTART NEG



TOLERANCE UNLESS OTHERWISE SPECIFIED:
 HARDWARE ITEMS: ±.010"/±0.25mm
 RADIAL DIAMETERS TO BE MEASURED OVER MANDRELS,
 RING GAGES OR PIN GAGES OF SUITABLE SIZE
 ALL THREADS ARE CLASS 2 FIT UNLESS OTHERWISE NOTED

BRASS ALLOY 360
 ROCKWELL HARDNESS B55 MINIMUM
 TENSILE STRENGTH 55,000 PSI MINIMUM
 PARTS MUST BE CLEAN AND OIL FREE

		VTE Incorporated 5437 Robinson Road, P.O. Box 790 Pellston, Michigan 49769 Telephone: 1-800-527-9256, 231-539-8000 FAX: 231-539-0914	
		REF:	DATE: 29APR03
TITLE: BRASS THREADED ROD			SCALE:
MATERIAL:		PART NO. 3741-000	
COLOR:	DRG CLASS		