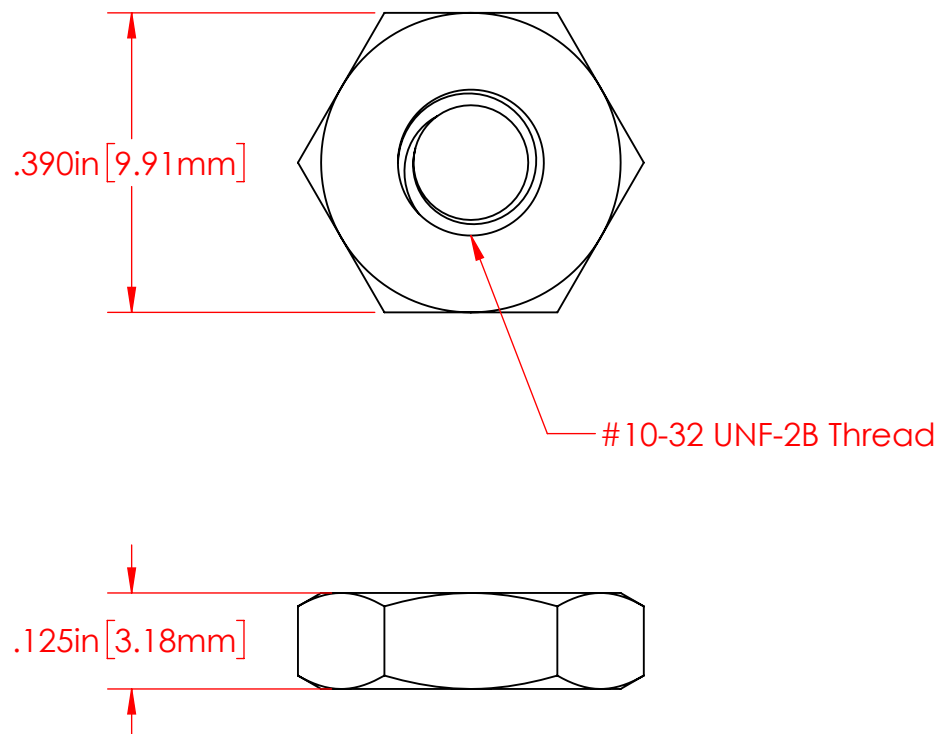
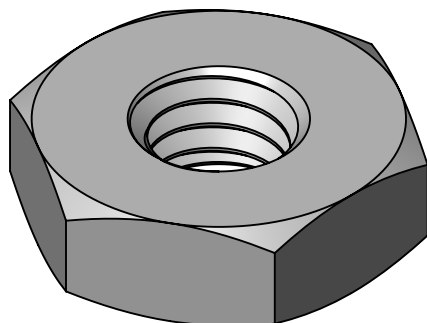


REVISIONS			
REV.	DESCRIPTION	DATE	APPROVED
E	Redrawn in Solidworks	1/10/2023	RAS



P/N 3841-000
 #10-32 Heavy Hex Jam Nut
 Tin Plated 360 Brass Alloy

Part Material :
 Tin Plated 360 Brass

ALL DIMENSIONS GIVEN AS : INCH [METRIC]
 TOLERANCES UNLESS OTHERWISE SPECIFIED :
 HARDWARE PRODUCTS : $\pm .010"$ / $\pm 0.25\text{mm}$

PRINTED COPIES ARE NOT CONTROLLED

PROPRIETARY AND CONFIDENTIAL

THE INFORMATION CONTAINED IN THIS
 DRAWING IS THE SOLE PROPERTY OF
 VTE INCORPORATED. ANY REPRODUCTION
 IN PART OR AS A WHOLE WITHOUT THE WRITTEN
 PERMISSION OF VTE INCORPORATED PROHIBITED.



VTE INCORPORATED

5437 Robinson Road, P.O. Box 790
 Pellston, Michigan 49769 USA
 Telephone : 1-800-527-9256, 231-539-8000
 Fax : 231-539-0914, EFax : 231-344-5914

REV **E**
 SIZE **A**

DRAWN BY:	NAME	DATE
CHECKED BY:	RAS	1-10-23
DO NOT SCALE DRAWING		

TITLE:
 #10-32 Tin Plated Brass Jam Nut

DWG. NO. **3841-000**