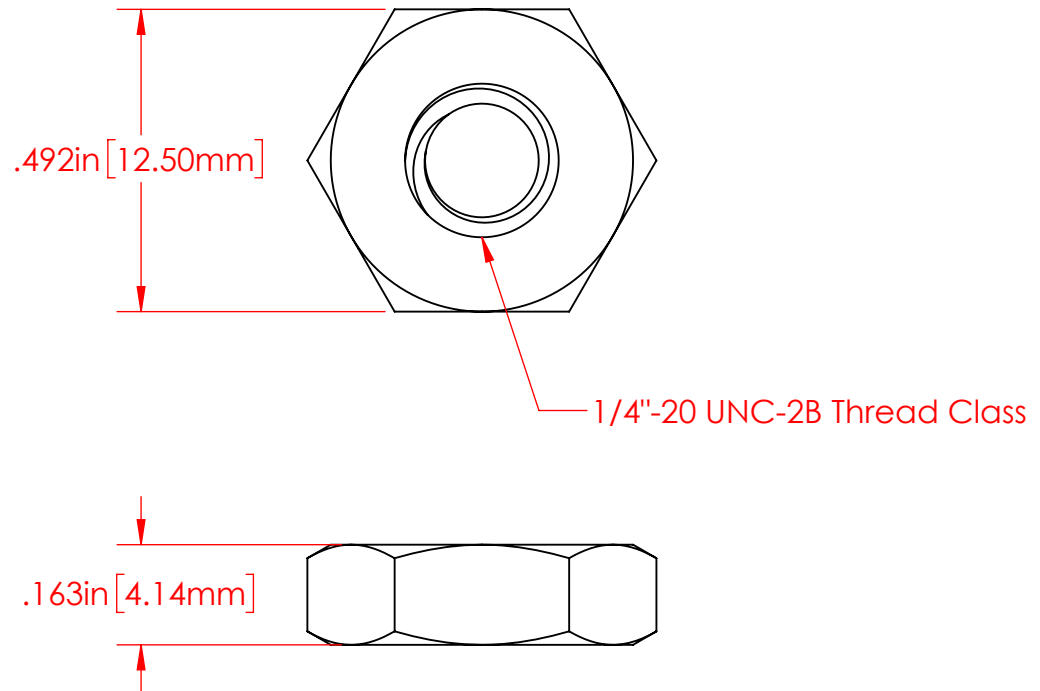
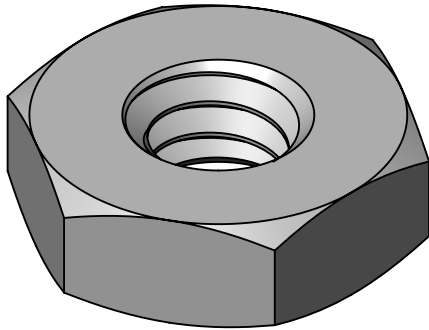


REVISIONS			
REV.	DESCRIPTION	DATE	APPROVED
D	Redrawn in Solidworks	1/11/2023	RAS



P/N 3842-000
1/4"-20 Heavy Hex Jam Nut
Tin Plated 360 Brass Alloy

Part Material :
Tin Plated Brass Alloy

ALL DIMENSIONS GIVEN AS : INCH [METRIC]
TOLERANCES UNLESS OTHERWISE SPECIFIED :
HARDWARE PRODUCTS : $\pm .010"$ / $\pm 0.25\text{mm}$

PRINTED COPIES ARE NOT CONTROLLED
PROPRIETARY AND CONFIDENTIAL
THE INFORMATION CONTAINED IN THIS
DRAWING IS THE SOLE PROPERTY OF
VTE INCORPORATED. ANY REPRODUCTION
IN PART OR AS A WHOLE WITHOUT THE WRITTEN
PERMISSION OF VTE INCORPORATED PROHIBITED.



VTE INCORPORATED

5437 Robinson Road, P.O. Box 790
Pellston, Michigan 49769 USA
Telephone : 1-800-527-9256, 231-539-8000
Fax : 231-539-0914, EFax : 231-344-5914

REV **D**
SIZE **A**

NAME	DATE
DRAWN BY: RAS	1-11-23
CHECKED BY:	
DO NOT SCALE DRAWING	

TITLE:
1/4"-20 Stainless Steel Heavy Hex Jam Nut

DWG. NO. **3842-000**