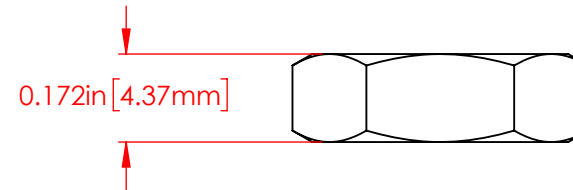
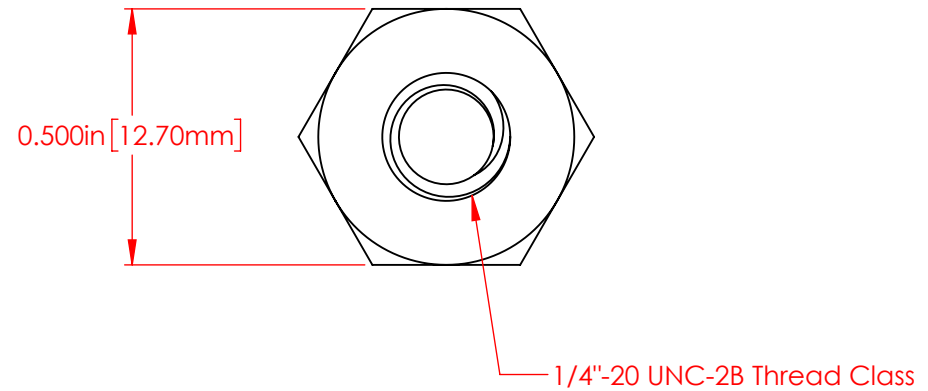
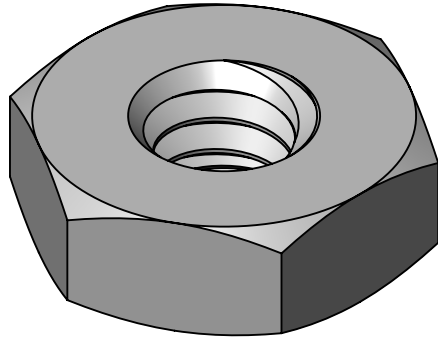



REVISIONS			
REV.	DESCRIPTION	DATE	APPROVED
B	Redrawn in Solidworks	11/8/2023	RAS



P/N 3842-003
1/4"-20 Heavy Hex Jam Nut
316 Stainless Steel

Part Material : 316 Stainless Steel				VTE INCORPORATED 5437 Robinson Road, P.O. Box 790 Pellston, Michigan 49769 USA Telephone : 1-800-527-9256, 231-539-8000 Fax : 231-539-0914, Efax : 231-344-5914		
ALL DIMENSIONS GIVEN AS : INCH [METRIC] TOLERANCES UNLESS OTHERWISE SPECIFIED : HARDWARE PRODUCTS : ±.010" / ±0.25mm						
PRINTED COPIES ARE NOT CONTROLLED PROPRIETARY AND CONFIDENTIAL THE INFORMATION CONTAINED IN THIS DRAWING IS THE SOLE PROPERTY OF VTE INCORPORATED. ANY REPRODUCTION IN PART OR AS A WHOLE WITHOUT THE WRITTEN PERMISSION OF VTE INCORPORATED PROHIBITED.		REV B		NAME	DATE	TITLE:
		SIZE A	DRAWN BY:	RAS	11-8-23	1/4"-20 Stainless Steel Heavy Hex Jam Nut
			CHECKED BY:			DWG. NO.
			DO NOT SCALE DRAWING			3842-003