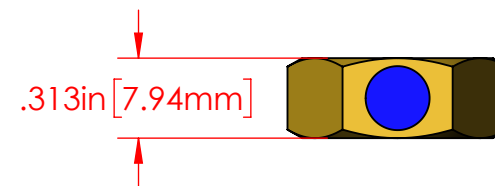
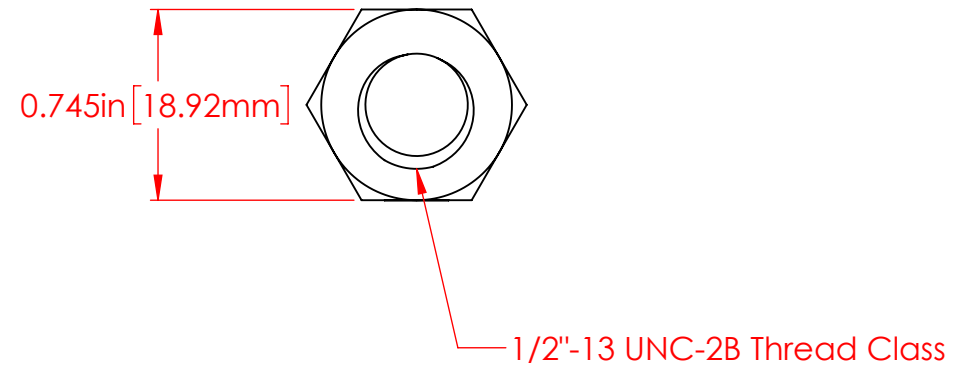
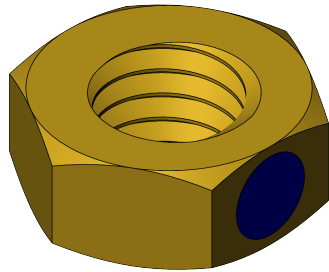


REVISIONS			
REV.	DESCRIPTION	DATE	APPROVED
B	Redrawn in Solidworks	1/17/2023	RAS



P/N 3850-B00
1/2"-13 Hex Nut
270 Brass Alloy

(Made from Part# 3850-000)

Part Material :
270 Brass Alloy

ALL DIMENSIONS GIVEN AS : INCH [METRIC]
TOLERANCES UNLESS OTHERWISE SPECIFIED :
HARDWARE PRODUCTS : $\pm .010"$ / $\pm 0.25\text{mm}$

PRINTED COPIES ARE NOT CONTROLLED
PROPRIETARY AND CONFIDENTIAL
THE INFORMATION CONTAINED IN THIS
DRAWING IS THE SOLE PROPERTY OF
VTE INCORPORATED. ANY REPRODUCTION
IN PART OR AS A WHOLE WITHOUT THE WRITTEN
PERMISSION OF VTE INCORPORATED PROHIBITED.



VTE INCORPORATED

5437 Robinson Road, P.O. Box 790
Pellston, Michigan 49769 USA
Telephone : 1-800-527-9256, 231-539-8000
Fax : 231-539-0914, EFax : 231-344-5914

REV	B	NAME	DATE
		DRAWN BY:	1-17-23
SIZE	A	CHECKED BY:	
		DO NOT SCALE DRAWING	

TITLE: 1/2"-13 Brass Hex Contact Nut
DWG. NO. **3850-B00**