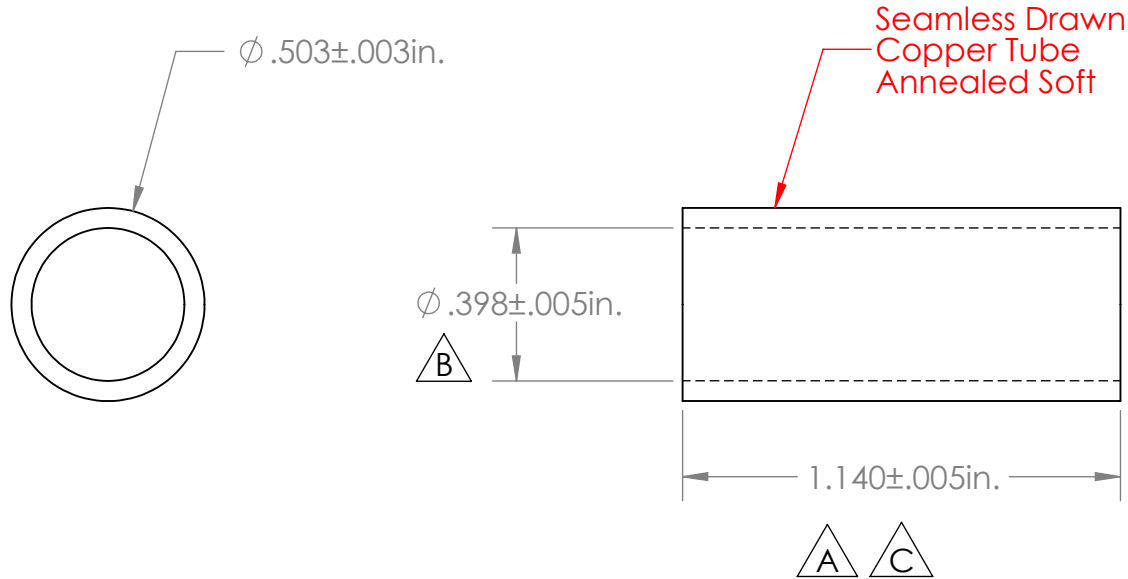
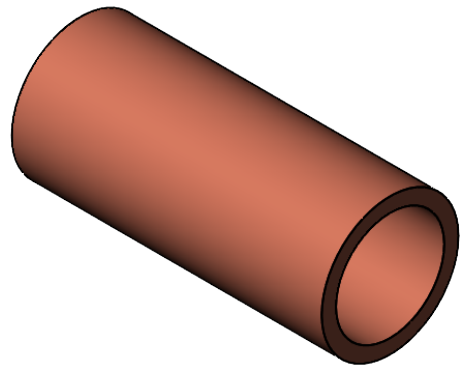


REVISIONS			
REV.	DESCRIPTION	DATE	APPROVED
A	1.135" was 1.125"	10-02-15	RAS
B	Updated from 0.389" to 0.398"	10-12-15	RAS
C	Updated from 1.135" to 1.140"	10-12-15	RAS
D	Added "Clean and Oil Free" Note	5-16-23	RAS
E	Added Annealing Instructions	6-20-23	RAS



Parts are to be Clean and Oil free

3864-000
Copper Core Bushing
122 Copper Alloy
Annealed Soft



Parts to be Annealed at 1,200 Degrees F 23" per Min. to Hardness Rockwell 15T 56 Max

Part Material :
122 Copper Alloy

ALL DIMENSIONS GIVEN AS : INCH [METRIC]
TOLERANCES UNLESS OTHERWISE SPECIFIED :
HARDWARE PRODUCTS : $\pm .010" / \pm 0.25 \text{ mm}$

PRINTED COPIES ARE NOT CONTROLLED

PROPRIETARY AND CONFIDENTIAL
THE INFORMATION CONTAINED IN THIS DRAWING IS THE SOLE PROPERTY OF VTE INCORPORATED. ANY REPRODUCTION IN PART OR AS A WHOLE WITHOUT THE WRITTEN PERMISSION OF VTE INCORPORATED PROHIBITED.



VTE INCORPORATED

5437 Robinson Road, P.O. Box 790
Pellston, Michigan 49769 USA
Telephone : 1-800-527-9256, 231-539-8000
Fax : 231-539-0914, EFax : 231-344-5914

REV	E	NAME	DATE
SIZE	A	DRAWN BY:	RAS 5-12-23
		CHECKED BY:	PJK 6-10-23
DO NOT SCALE DRAWING			

TITLE: Seamless Copper Bushing for M10

DWG. NO. **3864-000**