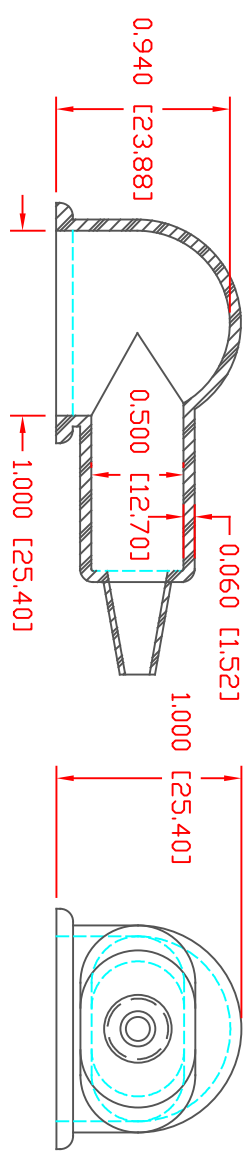
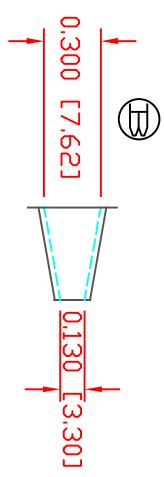
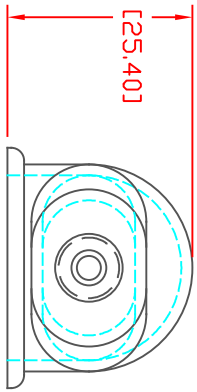


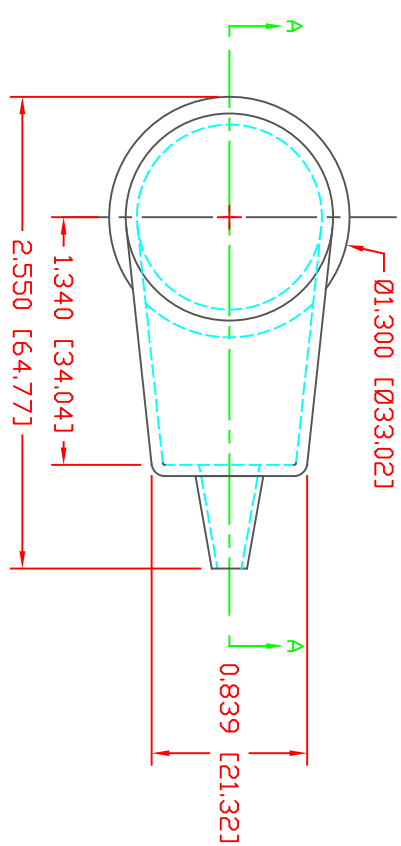
THE INFORMATION CONTAINED IN THIS DRAWING IS THE SOLE PROPERTY OF VTE INCORPORATED. ANY REPRODUCTION IN PART OR WHOLE WITHOUT THE WRITTEN PERMISSION OF VTE INCORPORATED IS PROHIBITED. VTE MAKES NO WARRANTY, EXPRESSED OR IMPLIED, AS TO THE SUITABILITY OF A PRODUCT FOR ANY INTENDED USE. THE CUSTOMER SHALL BEAR THE SOLE RESPONSIBILITY OF DETERMINING THE SUITABILITY OF ANY VTE PRODUCT FOR ITS END USE.



SECTION A-A
TYP. WALL THICKNESS = .060" [1.5]



SEAL THICKNESS = .030" [.8]
SEAL TOLERANCE: +.030/-010 [+8/-25]
WIRE GAGES: 18 - 10

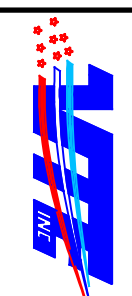


VTE PART NO: 1101700114
MATERIAL: PVC
VENDOR PART NO: 7843-70-BLACK
SHORE DUREMETER: "A" 10 SEC. 70
SPECIFIC GRAVITY: 1.34
ULT. ELONGATION %: 350
MELTING TEMP: 320-340 F [160-171 C]
BRITTLE TEMP: -22 F [-30 C]
TENSILE STRENGTH PSI: 1500 PSI
DIELECTRIC STRENGTH, V./mil: 500
U.L. RATING: V0

DD NOT SCALE

LR.	REVISIONS	DATE	INT.
A	UPDATED MATERIAL INFORMATION	8-02-22	RAS
B	MOVED DIMENSION FROM DD TO TD OF CABLE ENTRY	10-29-24	RAS

SCALE FACTOR : NONE
ALL DIMENSIONS GIVEN AS [in, (mm)]
TOLERANCES UNLESS OTHERWISE SPECIFIED :
MOLDED PARTS: ±.030" [±0.8mm]
ALL ANGLES ARE ± 1 DEGREE



VTE Incorporated
5437 Robinson Road, P.O. Box 790
Pellston, Michigan 49769
Telephone: 1-800-527-9256, 231-539-8000
FAX: 231-539-0914

REF:	DATE:	DRN BY:	BRH	WEIGHT:
CUSTOMER DIMS	02-14-05	CHK'D BY:	BRH	.019 LBS (8.48 g)
TITLE: EYELET TERMINAL INSULATOR				
MATERIAL:	PVC	PART NO: 405N1F14		
COLOR:	BLACK	DRG CLASS	REV B	