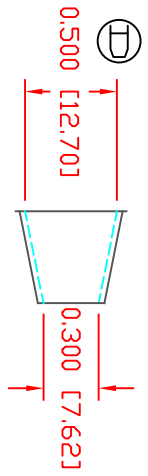
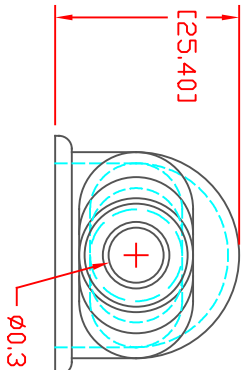
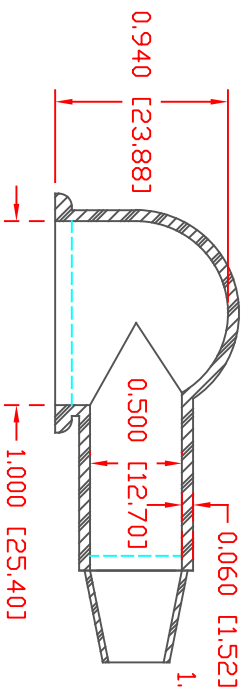
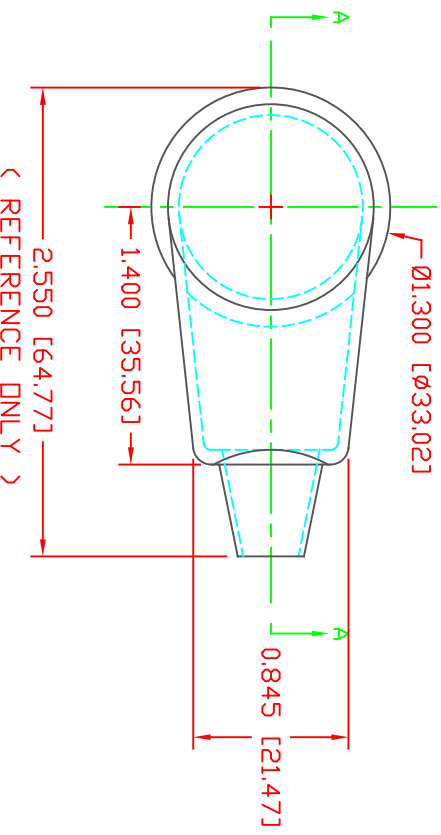


THE INFORMATION CONTAINED IN THIS DRAWING IS THE SOLE PROPERTY OF VTE INCORPORATED. ANY REPRODUCTION IN PART OR WHOLE WITHOUT THE WRITTEN PERMISSION OF VTE INCORPORATED IS PROHIBITED. VTE MAKES NO WARRANTY, EXPRESSED OR IMPLIED, AS TO THE SUITABILITY OF A PRODUCT FOR ANY INTENDED USE. THE CUSTOMER SHALL BEAR THE SOLE RESPONSIBILITY OF DETERMINING THE SUITABILITY OF ANY VTE PRODUCT FOR ITS END USE.



SECTION A-A
TYP. WALL THICKNESS = .060" [1.51]

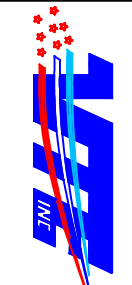
SEAL THICKNESS = .030" [.8]
SEAL TOLERANCE: +.030/- .010 [+8/- .25]
WIRE GAGES: 8 - 2



MATERIAL PART NO: 1101700109
MATERIAL: BLUE PVC
VENDOR PART NO: 7844-70 BLUE 1812
SPECIFIC GRAVITY: 1.36
HARDNESS 10 SEC: 70
HARDNESS SCALE: A
TENSILE STRENGTH, PSI: 1100
ELONGATION, %: 310
TEAR STRENGTH, PPI: 200
FLAME CLASS UL: HB
MELT TEMP., DEGREES F [C]: 320-340 [160-171]
DIELECTRIC STRENGTH, V/MIL: N/A

LR.	REVISIONS	DATE	INT.
A	UPDATED DIMENSIONS	11-12-15	RAS
B	ADDED 'REFERENCE ONLY' NOTE TO DIMENSION	7-20-22	RAS
C	UPDATED MATERIAL INFORMATION	8-02-22	RAS
D	MOVED DIMENSION FROM DD. TO LD OF CABLE ENTRY	10-29-24	RAS

SCALE FACTOR : NONE
ALL DIMENSIONS GIVEN AS: In [mm]
TOLERANCES UNLESS OTHERWISE SPECIFIED :
MOLDED PARTS: ±.030" [±0.8mm]
ALL ANGLES ARE ± 1 DEGREE



VTE Incorporated
5437 Robinson Road, P.O. Box 790
Pellston, Michigan 49769
Telephone: 1-800-527-9256, 231-539-8000
FAX: 231-539-0914

REF:	DATE:	DRN BY:	JC	WEIGHT:	
CUSTOMER DIMS	03-26-98	CHK'D BY:	JC	.019 LBS [8.48 g]	
TITLE:	EYELET TERMINAL INSULATOR				
MATERIAL:	PVC	PART NO:	405N2V09		
COLOR:	BLUE	DRG CLASS	REV D		