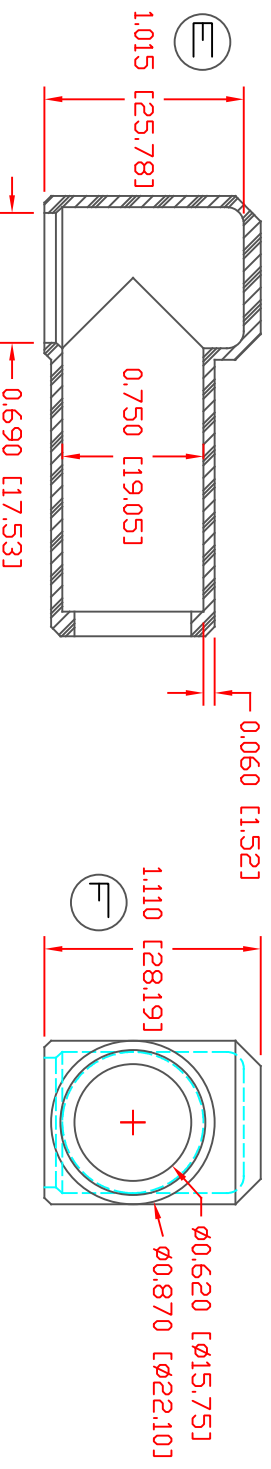
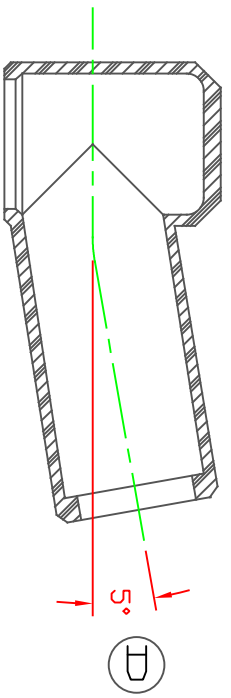
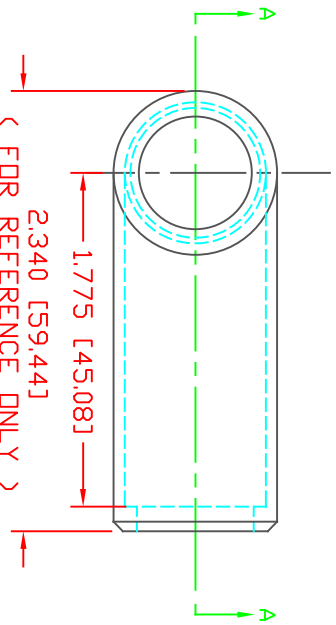


THE INFORMATION CONTAINED IN THIS DRAWING IS THE SOLE PROPERTY OF VTE INCORPORATED. ANY REPRODUCTION IN PART OR WHOLE WITHOUT THE WRITTEN PERMISSION OF VTE INCORPORATED IS PROHIBITED. VTE MAKES NO WARRANTY, EXPRESSED OR IMPLIED, AS TO THE SUITABILITY OF A PRODUCT FOR ANY INTENDED USE. THE CUSTOMER SHALL BEAR THE SOLE RESPONSIBILITY OF DETERMINING THE SUITABILITY OF ANY VTE PRODUCT FOR ITS END USE.

LTR	REVISIONS	DATE	INT.
A	ADDED 10 DEGREE VIEW AND NOTES	01-07-02	BRH
B	REMOVED ALTERNATE PART NUMBER NOTE	05-24-16	RAS
C	UPDATED MATERIAL WEIGHT FROM .022 LBS (9.48 G)	08-30-16	RAS
D	UPDATED DECREE TOLERANCE FROM 10 DEG	10-18-17	RAS
E	REVISED DIMENSION FROM 1.060 [26.92]	10-19-17	RAS
F	REVISED DIMENSION FROM 1.150 [29.21]	10-19-17	RAS
G	ADDED REFERENCE ONLY NOTE TO LENGTH DIMENSION	10-18-17	RAS
H	UPDATED MATERIAL INFORMATION	8-02-22	RAS

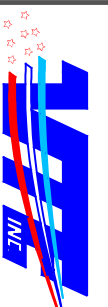


SECTION A-A
TYP. WALL THICKNESS = .060" [1.5]
TYP. BEVEL = 45°



SECTION A-A
ALLOWABLE DISTORTION
SCALE FACTOR : NONE
ALL DIMENSIONS GIVEN AS: In [mm]
TOLERANCES UNLESS OTHERWISE SPECIFIED :
MOLDED PARTS: ±.030" [±0.8mm]
ALL ANGLES ARE ± 1 DEGREE

⊖ MATERIAL PART NO: 1101700109
MATERIAL: BLUE PVC
VENDOR PART NO: 7844-70 BLUE 1812
SPECIFIC GRAVITY: 1.36
HARDNESS 10 SEC: 70
HARDNESS SCALE: A
TENSILE STRENGTH, PSI: 1100
ELONGATION, %: 310
TEAR STRENGTH, PPI: 200
FLAME CLASS UL: HB
MELT TEMP., DEGREES F [C]: 320-340 [160-171]
DIELECTRIC STRENGTH, V./MIL: N/A



VTE Incorporated
5437 Robinson Road, P.O. Box 790
Pellston, Michigan 49769
Telephone: 1-800-527-9256, 231-539-8000
FAX: 231-539-0914

REF:	DATE:	DRN BY:	JC	WEIGHT:
CUSTOMER DIMS	03-27-98	CHK'D BY:	JC	.021 LBS [9.66 g]
TITLE:	EYELET TERMINAL INSULATOR BDDT			
MATERIAL:	PVC	PART NO:	407N8V09	
COLOR:	BLUE	DRG CLASS	REV H	

DD NOT SCALE