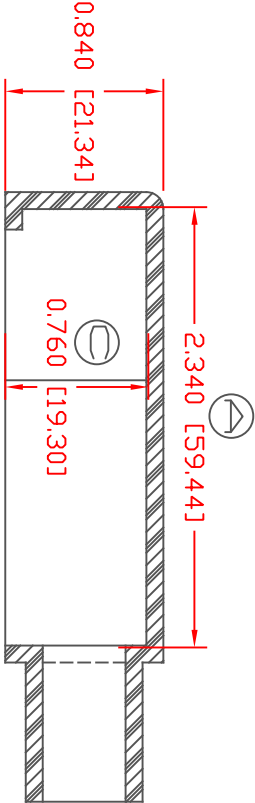
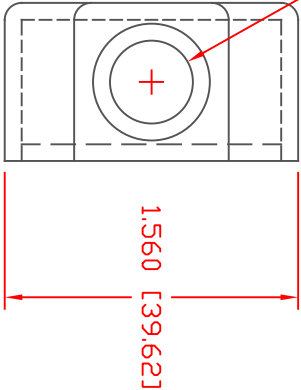
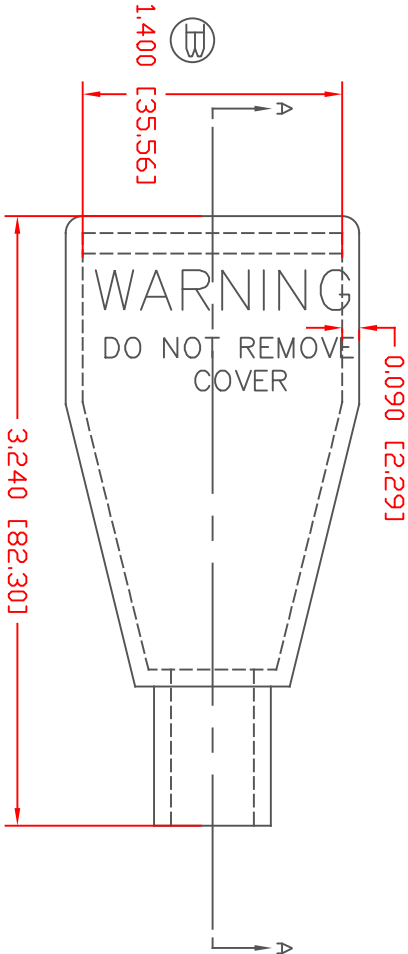


THE INFORMATION CONTAINED IN THIS DRAWING IS THE SOLE PROPERTY OF VTE INCORPORATED. ANY REPRODUCTION IN PART OR WHOLE WITHOUT THE WRITTEN PERMISSION OF VTE INCORPORATED IS PROHIBITED. VTE MAKES NO WARRANTY, EXPRESSED OR IMPLIED, AS TO THE SUITABILITY OF A PRODUCT FOR ANY INTENDED USE. THE CUSTOMER SHALL BEAR THE SOLE RESPONSIBILITY OF DETERMINING THE SUITABILITY OF ANY VTE PRODUCT FOR ITS END USE.

LTR.	REVISIONS	DATE	INT.
A	UPDATED 2.320 TO 2.340	3-2-17	RAS
B	UPDATED 1.380 TO 1.400	3-2-17	RAS
C	UPDATED 0.750 TO 0.760	3-2-17	RAS




SECTION A-A
TYP. WALL THICKNESS = .090" [2.3]
TYP. RADIUS = .090" [2.3]

ALL DIMENSIONS GIVEN AS: In [mm]
MOLDED PARTS: $\pm .030"$ [$\pm 0.8mm$]

VTE PART NO: 1101700102
MATERIAL: PVC
VENDOR PART NO: 7843-70-RED 6288
SHORE DUREMETER: "A" 10 SEC. 70
SPECIFIC GRAVITY: 1.34
ULT. ELONGATION %: 350
MELTING TEMP: 320-340 F [160-171 C]
BRITTLE TEMP: -22 F [-30 C]
TENSILE STRENGTH PSI: 1550
DIELECTRIC STRENGTH, V./mil: 553
UL. RATING: V0

DO NOT SCALE

 <div>VTE Incorporated 5437 Robinson Road, P.O. Box 790 Pellston, Michigan 49769 Telephone: 1-800-527-9256, 231-539-8000 FAX: 231-539-0914</div>				
REF:	DATE:	DRN BY:	JC	WEIGHT:
	03-27-16	CHK'D BY:	JC	.044 LBS [20.5 g]
TITLE: BATTERY CABLE BOOT				
MATERIAL:	PVC	PART NO:		
COLOR: RED	DRG CLASS	415N7F02		