

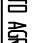
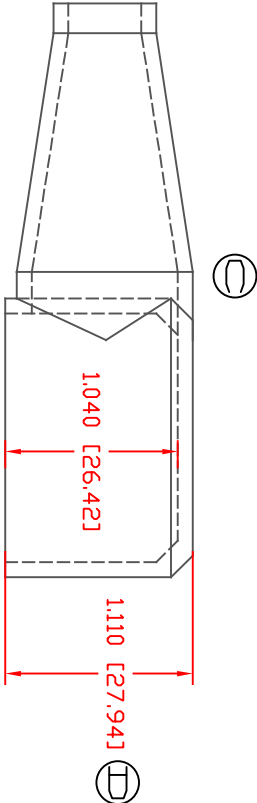
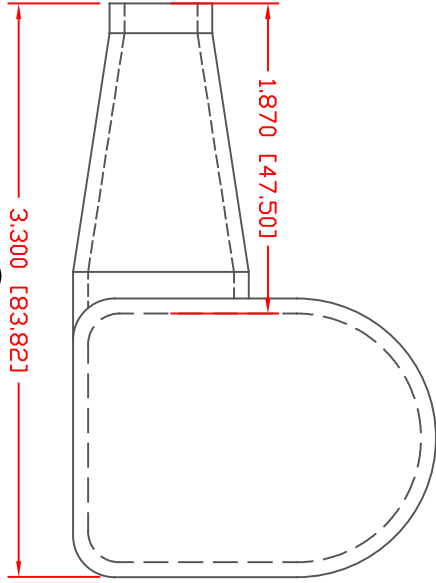
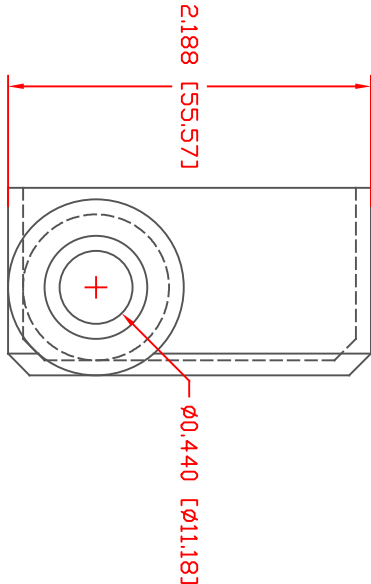


THE INFORMATION CONTAINED IN THIS DRAWING IS THE SOLE PROPERTY OF VTE INCORPORATED. ANY REPRODUCTION IN PART OR WHOLE WITHOUT THE WRITTEN PERMISSION OF VTE INCORPORATED IS PROHIBITED. VTE MAKES NO WARRANTY, EXPRESSED OR IMPLIED, AS TO THE SUITABILITY OF A PRODUCT FOR ANY INTENDED USE. THE CUSTOMER SHALL BEAR THE SOLE RESPONSIBILITY OF DETERMINING THE SUITABILITY OF ANY VTE PRODUCT FOR ITS END USE.

LTR.	REVISIONS	DATE	INT.
	REVISED TO AGREE WITH PARTS AS MANUFACTURED	02-04-15	BRH
	UPDATED MATERIAL INFORMATION	8-02-22	RAS
	3.300 [83.82] WAS 3.458 [87.84]	12-11-23	RAS
ID	1.110 [27.94] WAS 1.130 [28.70]	12-11-23	RAS




TYP. WALL THICKNESS = .090" [2.3]

ALL DIMENSIONS GIVEN AS: In [mm]
MOLDED PARTS: ±.030" [±0.8mm]
HARDWARE ITEMS: ±.010" [±0.25mm]



VTE PART NO: 1101700114
MATERIAL: PVC
VENDOR PART NO: 7843-70-BLACK
SHORE DUREMETER: "A" 10 SEC. 70
SPECIFIC GRAVITY: 1.34
ULT. ELONGATION %: 350
MELTING TEMP: 320-340 F [160-171 C]
BRITTLE TEMP: -22 F [-30 C]
TENSILE STRENGTH PSI: 1500 PSI
DIELECTRIC STRENGTH, V./mil: 500
V.L. RATING: V0

DD NOT SCALE



VTE Incorporated

5437 Robinson Road, P.O. Box 790
Pellston, Michigan 49769
Telephone: 1-800-927-9256, 231-539-8000
FAX: 231-539-0914

REF:	DATE:	DRN BY:	JC	WEIGHT:
CUSTOMER DIMS	03-18-98	CHK'D BY:	JC	.055 LBS [24.9 g]
TITLE: TERMINAL INSULATOR				
MATERIAL:	PVC	PART NO. 433LSF14		
COLOR:	BLACK	DRG CLASS	REV D	