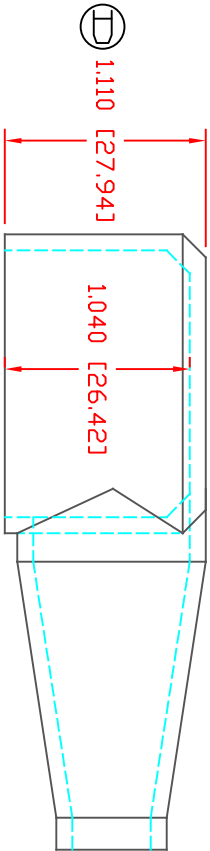
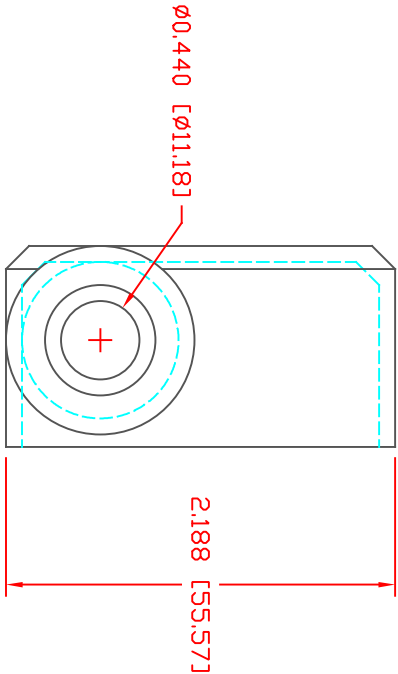
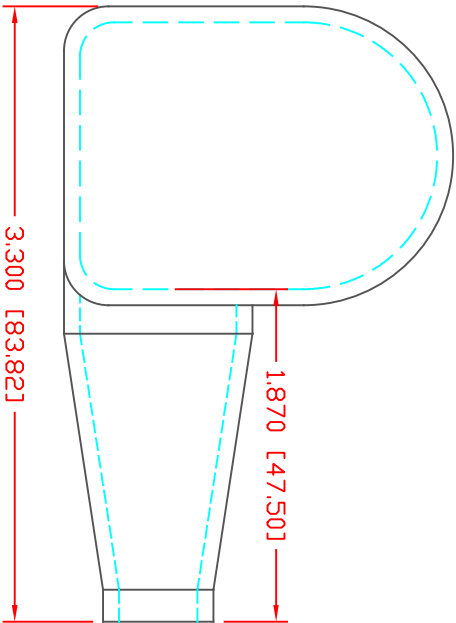


THE INFORMATION CONTAINED IN THIS DRAWING IS THE SOLE PROPERTY OF VTE INCORPORATED. ANY REPRODUCTION IN PART OR WHOLE WITHOUT THE WRITTEN PERMISSION OF VTE INCORPORATED IS PROHIBITED. VTE MAKES NO WARRANTY, EXPRESSED OR IMPLIED, AS TO THE SUITABILITY OF A PRODUCT FOR ANY INTENDED USE. THE CUSTOMER SHALL BEAR THE SOLE RESPONSIBILITY OF DETERMINING THE SUITABILITY OF ANY VTE PRODUCT FOR ITS END USE.

| LTR | REVISIONS                                  | DATE     | INT. |
|-----|--|----------|------|
| △   | REVISED TO AGREE WITH PART AS MANUFACTURED | 02-04-15 | BRH  |
| B   | UPDATED MATERIAL INFORMATION               | 8-02-22  | RAS  |
| C   | 3,300 [83.82] WAS 3,458 [87.84]            | 12-11-23 | RAS  |
| D   | 1,110 [27.94] WAS 1,130 [28.70]            | 12-11-23 | RAS  |

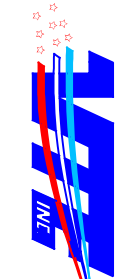


TYP. WALL THICKNESS = .090" [2.3]



MATERIAL PART NO: 1101700109  
MATERIAL: BLUE PVC  
VENDOR PART NO: 7844-70 BLUE 1812  
SPECIFIC GRAVITY: 1.36  
HARDNESS 10 SEC: 70  
HARDNESS SCALE: A  
TENSILE STRENGTH, PSI: 1100  
ELONGATION, %: 310  
TEAR STRENGTH, PPI: 200  
FLAME CLASS UL: HB  
MELT TEMP., DEGREES F [C]: 320-340 [160-171]  
DIELECTRIC STRENGTH, V./MIL: N/A

ALL DIMENSIONS GIVEN AS: In [mm]  
MOLDED PARTS: ±.030" [±0.8mm]  
HARDWARE ITEMS: ±.010" [±0.25mm]



VTE Incorporated  
5437 Robinson Road, P.O. Box 790  
Pellston, Michigan 49769  
Telephone: 1-800-527-9256, 231-539-8000  
FAX: 231-539-0914

|               |                 |                      |    |                              |
|---------------|-----------------|----------------------|----|------------------------------|
| REF:          | DATE:           | DRN BY:              | JC | WEIGHT:<br>.055 LBS [24.9 g] |
| CUSTOMER DIMS | 03-18-98        | CHK'D BY:            | JC |                              |
| TITLE:        |                 | TERMINAL INSULATOR   |    |                              |
| MATERIAL:     | PVC             | PART NO.<br>433R5V09 |    |                              |
| COLOR: BLUE   | DRG CLASS REV D |                      |    |                              |

DD NOT SCALE